

MT-EEPR

Micro Thermo's Electronic Evaporator Pressure Regulator (EEPR) controller is designed to control Sporlan CDS-series valves and Alco Electronic Stepper Regulator (ESR) valves.

The temperature control system is based on a direct reading of the air temperature in refrigerated cases. It automatically positions the EEPR valve that throttles the suction on the evaporators. This throttling action increases the evaporating pressure / temperature with respect to the pressure in the suction manifold.

EEPR valves are considerably more precise than mechanical EPR valves, allowing you to regulate the average temperature to within  $\pm 0.1^{\circ}\text{C}$  ( $\pm 0.18^{\circ}\text{F}$ ) or better. In addition, the set point can be modified through a simple software command using the MT Alliance™ software configuration tool.

The distributed temperature control system consists of various controllers from Micro Thermo, including the MT-EEPR controller itself, the MT-500 (sensor node), the MT-SPC (suction pressure controller) and the MT-CKT (circuit controller).

## KEY FEATURES AND BENEFITS

- Precise temperature regulation under all store conditions
- Software-modifiable set points
- Easy software configuration via MT Alliance
- Critical circuits can be favored over less critical ones
- EEPR valves are easier to install and configure than mechanical EPRs
- Precise control of dual use cases, using mechanical switches or software
- Valve can be closed momentarily to stop refrigerant flow for cleaning purposes, using a mechanical switch or software
- Selective Load Shedding

Supermarket Controls Solutions... **Simply Powerful**

[www.microthermo.com](http://www.microthermo.com)



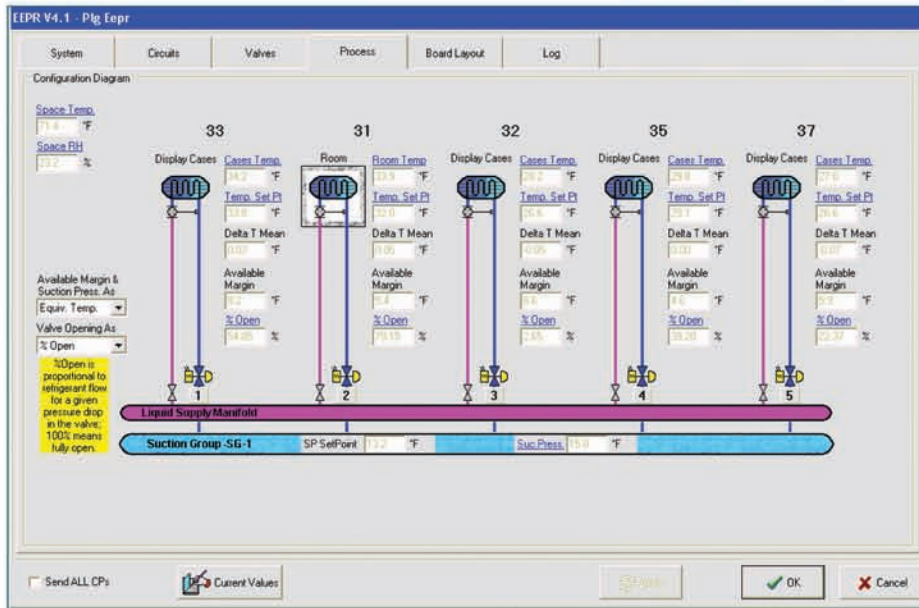
## SPECIFICATIONS

	<b>MT-EEPR</b>
<b>Applications</b>	Control up to 5 Electric Evaporator Pressure Regulator valves (Sporlan CDS series and Alco ESR)
<b>Universal Inputs</b>	None
<b>Digital Inputs</b>	None
<b>Digital Outputs</b>	None
<b>Local Status/ Switching</b>	Board switches can be used to operate valves manually in stand-alone mode or after configuration from MT Alliance
<b>Analog Outputs</b>	5 outputs dedicated to drive stepping motors
<b>Dimensions</b>	8.0" x 4.0" x 1.5" (204mm x 102mm x 38mm)
<b>Mounting</b>	SnapTrak Panel or Wall Mounting
<b>Electrical</b>	24Vac Transformer, 8VA (no center-tap needed)
<b>Environmental</b>	Operating and Storage: -40-168°F (-40-75°C) 5-95% RH, non-condensing
<b>Listings</b>	UL Listed

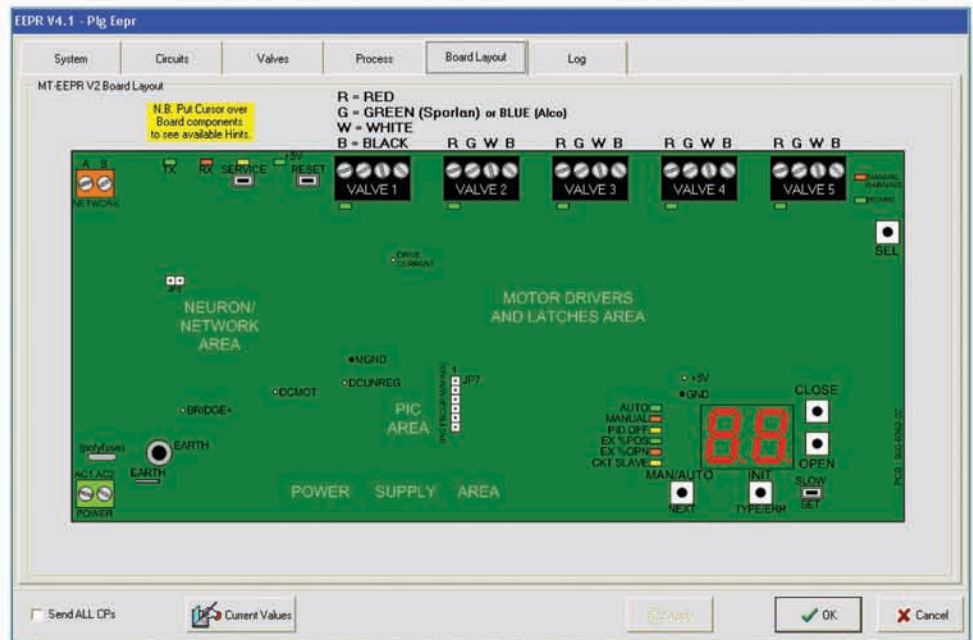
Supermarket Controls Solutions... **Simply Powerful**

[www.microthermo.com](http://www.microthermo.com)





Easy integration and troubleshooting from MT Alliance



MT Alliance mouse-over tooltips make board setup a snap

Supermarket Controls Solutions... **Simply Powerful**  
[www.microthermo.com](http://www.microthermo.com)

