

Micro Thermo's Dual Temp Electronic Evaporator Pressure Regulator (DT-EEPR) controller is designed to control Sporlan® CDS-series and SDR-series valves and Alco Electronic Stepper Regulator (ESR) valves.

The temperature control is based on a direct reading of the air temperature in refrigerated cases. It automatically positions the DT-EEPR valve that throttles the suction on the evaporators. This throttling action increases the evaporating pressure and/or temperature with respect to the suction manifold pressure.

DT-EEPR-controlled valves are considerably more precise than mechanical Evaporator Pressure Regulator (EPR) valves, allowing regulation of the average temperature to within $\pm 0.18^{\circ}\text{F}$ ($\pm 0.1^{\circ}\text{C}$) or better. In addition, the setpoint can be modified through a simple software command using the MT Alliance® software configuration tool.

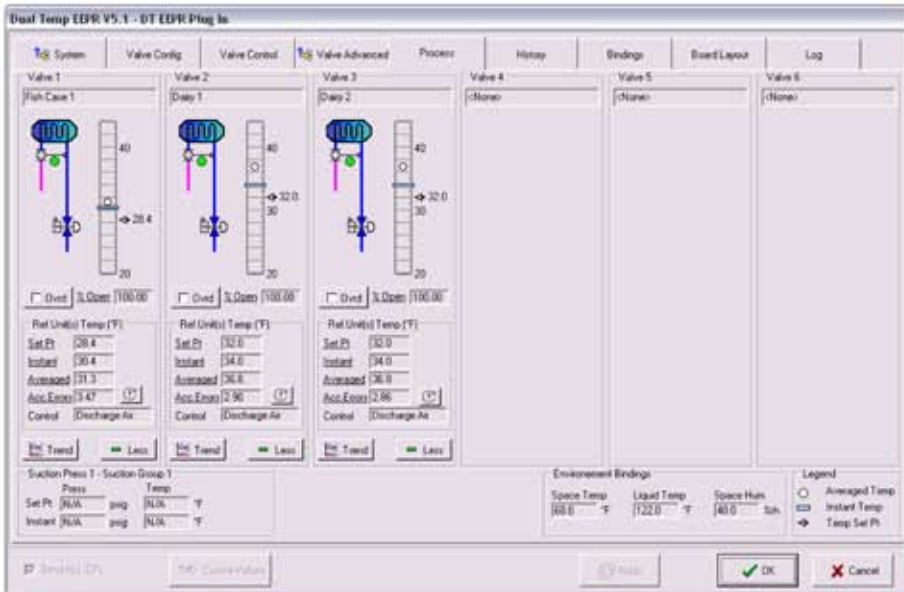
The distributed temperature control system consists of various controllers from Micro Thermo Technologies, including the DT-EEPR controller itself, the MT-500 (sensor node with refrigerated units), the MT-SPC (Suction Pressure Controller) and the MT-CKT (circuit controller).

Using state of the art technology and algorithms, the DT-EEPR controller uses a predictive information model to optimize control and improve overall refrigeration performance. With the data collection abilities of Micro Thermo's MT Alliance front end, our DT-EEPR can help you achieve better results than other controllers in the industry.

The DT-EEPR provides you with the ability to control dual temp case temperature without the need for mechanical adjustment. The controller automatically readapts itself based on the dual switch position and readjusts the valve opening accordingly using the new settings. In addition, the controller supports clean switch functionality.

Supermarket Controls Solutions... **Simply Powerful**

www.microthermo.com



Easy integration and troubleshooting from MT Alliance.



MT Alliance displays board layout screen with mouse-over tooltips that make board setup and programming a snap.

Supermarket Controls Solutions... **Simply Powerful**
www.microthermo.com

SPECIFICATIONS

| | |
|---------------------------------|--|
| Applications | Control up to 6 Electric Evaporator Pressure Regulator valves (CDS and SDR series from Sporlan or 12-volt ESR from Alco) |
| Universal Inputs | None |
| Digital Inputs | None |
| Digital Outputs | None |
| Local Status / Switching | Installs valves in stand-alone mode and opens them. Local interface shows the valves' presence and activity. MT Alliance Plug-In is used to set up the controller. |
| Analog Outputs | 6 outputs dedicated to drive 12-volt bipolar stepping motors |
| Dimensions | 4.00" x 10.375" x 1.75" |
| Mounting | SnapTrak Panel or Wall Mounting |
| Electrical | 24Vac Transformer (no center tap needed); 2.1A for 6 Sporlan valves, 3.4A for 6 Alco valves. |
| Environmental | Operating and Storage: -40 -168°F (-40 - 75°C) 5-95% RH, non-condensing |
| Listings | UL Listed, CSA Approved |

Supermarket Controls Solutions... **Simply Powerful**

www.microthermo.com