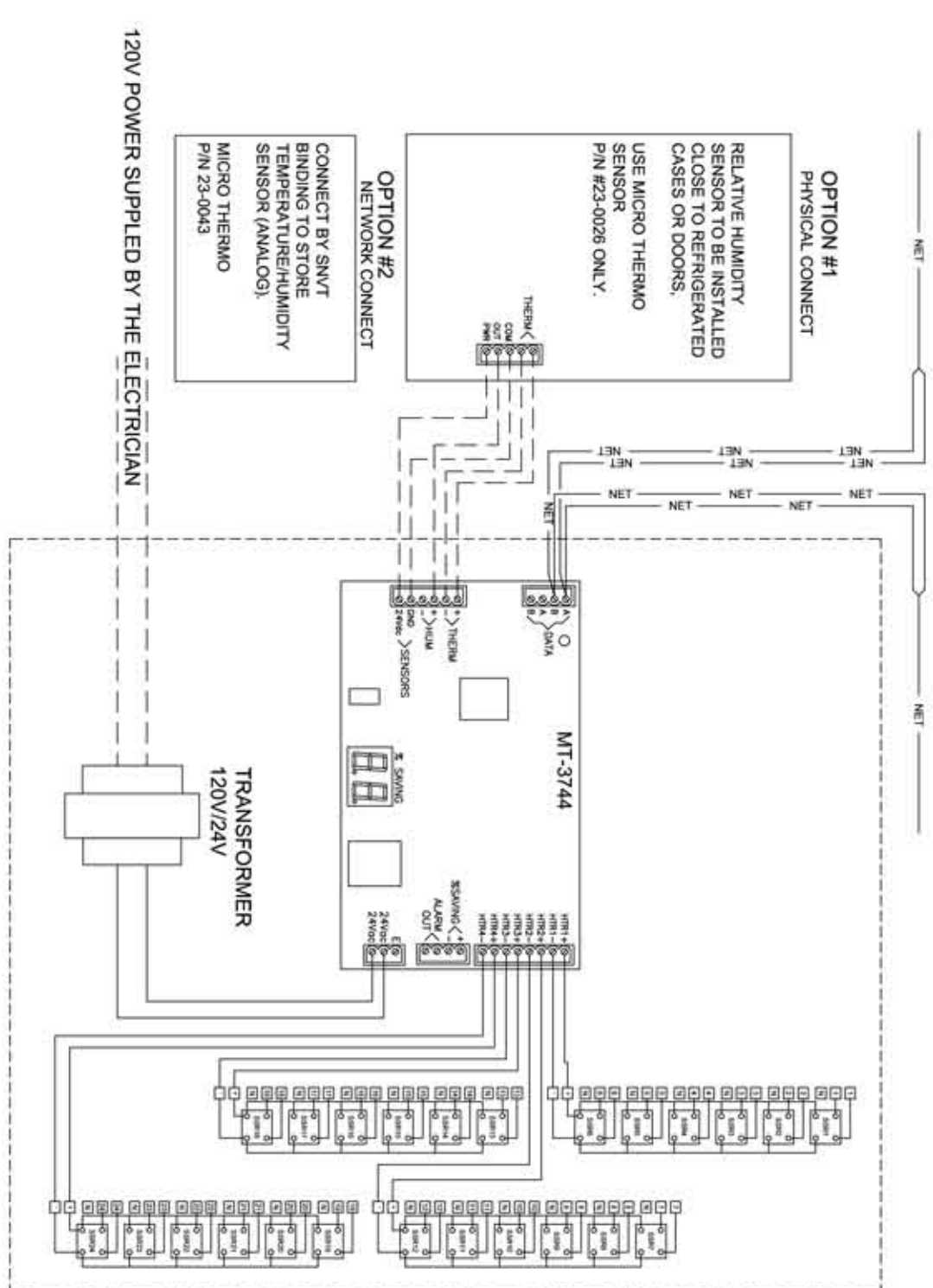


IMPORTANT NOTE :

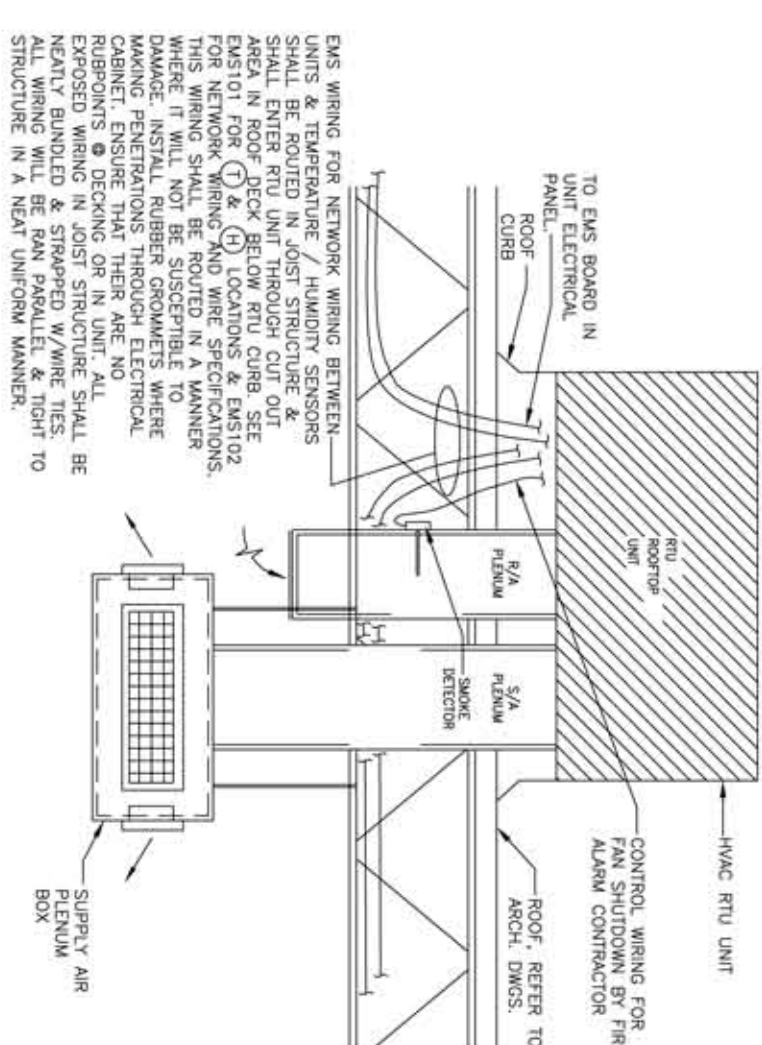
No part of this drawing may be reproduced, stored in a retrieval system, or transmitted, in any form or by any means, electronic, mechanical, photocopying, recording, or otherwise, without the prior written permission of Micro Thermo Technologies, a division of UTC Canada Corporation.

© 1997-2004 by Thermo Technologies.
All rights reserved worldwide

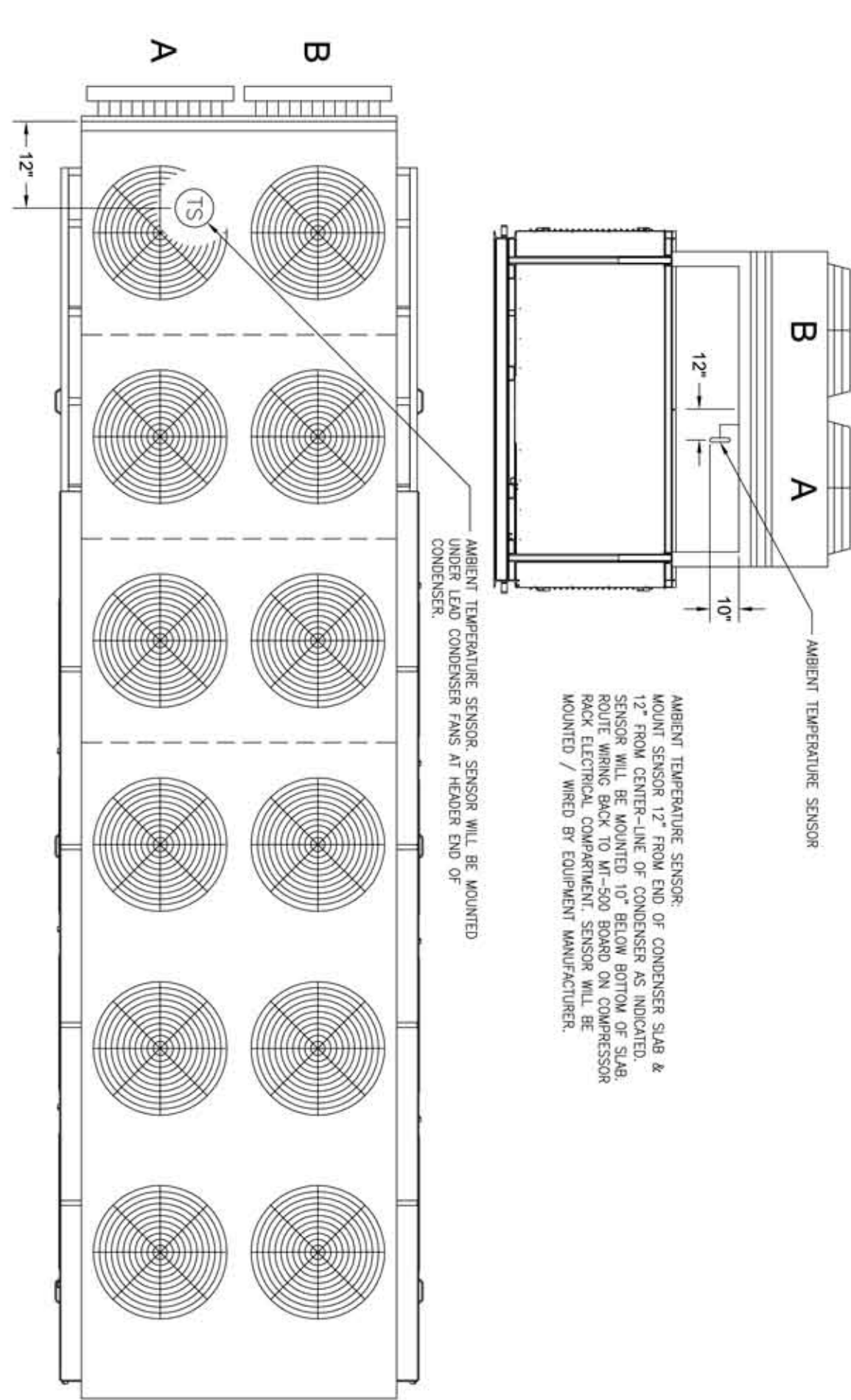
1 OUTDOOR PHOTO CELL WIRING DETAIL



2 WALK-IN/TEMPERATURE SENSOR MOUNTING DETAIL



3 HVAC & TEMPERATURE & HUMIDITY SENSOR WIRING DETAILS



ANTI SWEAT PANEL

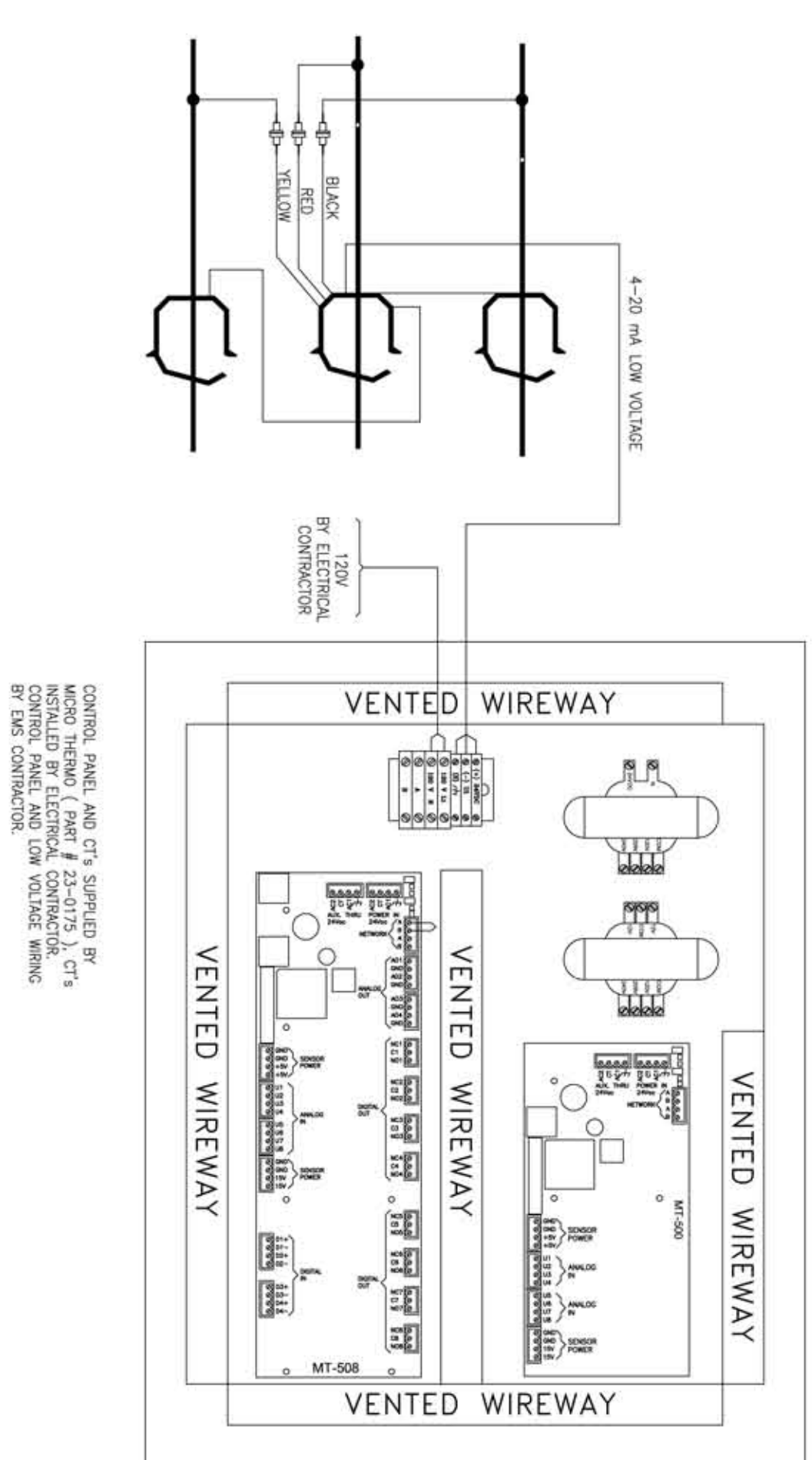
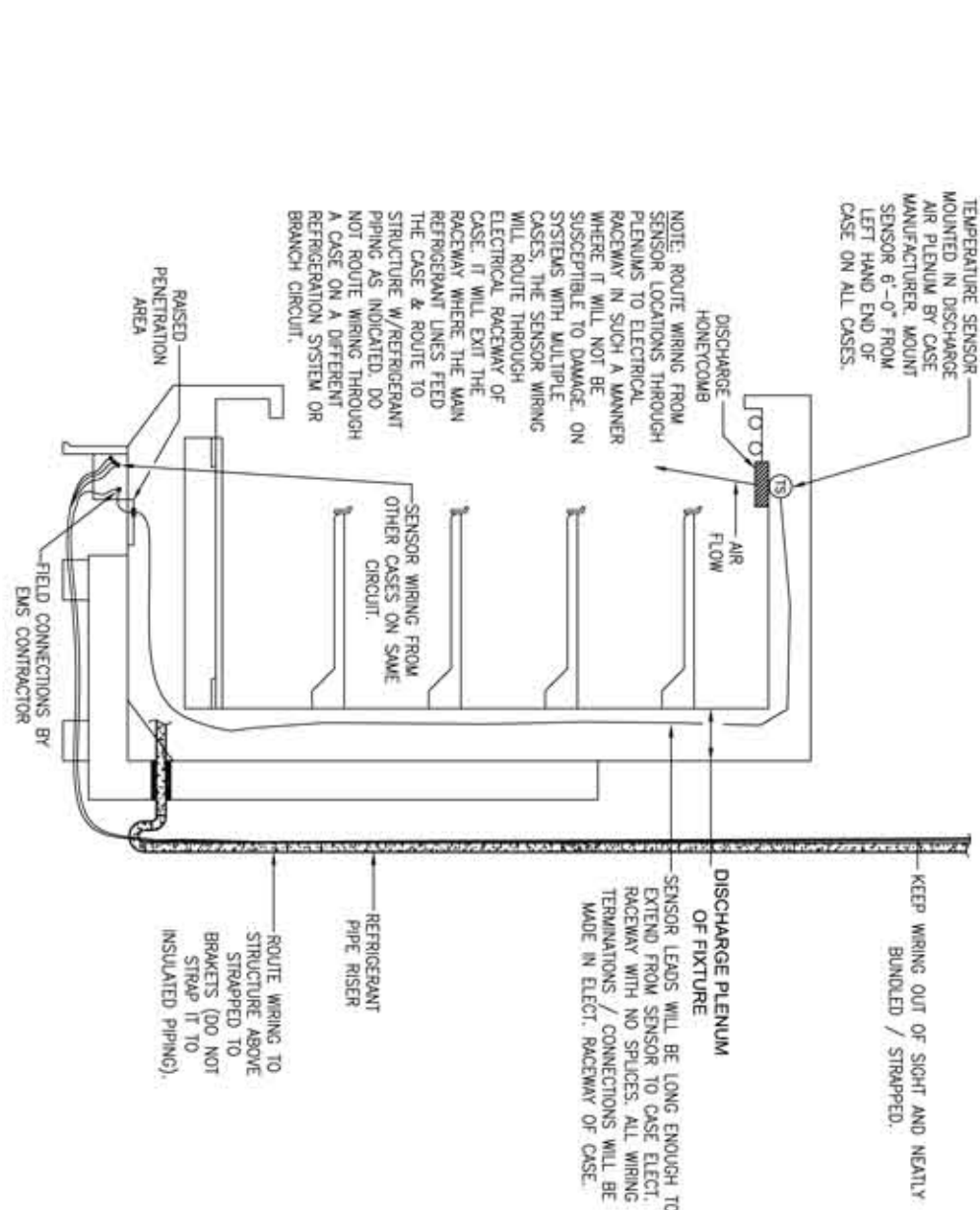
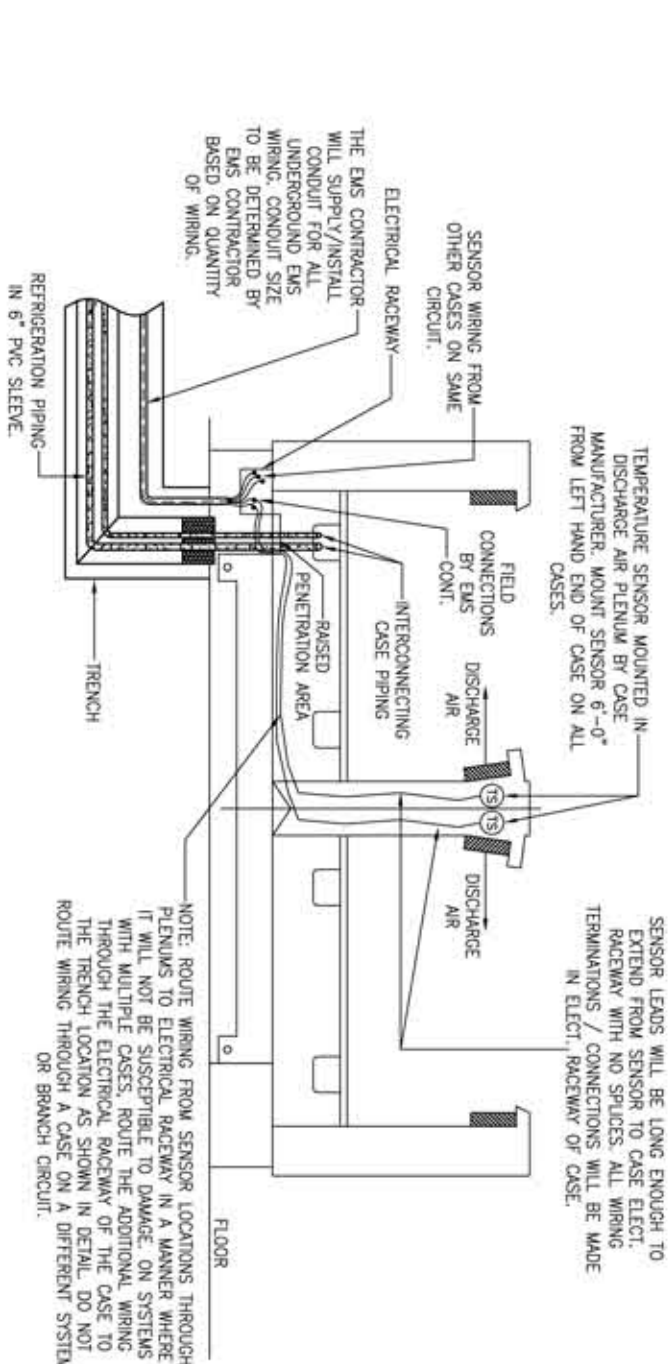
5 EMS WIRE ROUTING FOR Ⓡ & Ⓜ AT RTU UNIT

6 AMBIENT TEMPERATURE SENSOR MOUNTING DETAIL - TYPICAL OF RACKS RA, RB & RC

	08	
	07	
	06	
	05	
	04	
--	----	03
--	----	02
--	----	01
--	----	00
DATE	DESCRIPTION	REV.

ARCHITECT:

CLIENT:



AUTOMATISATION / CONTROL:



2584 boul. Le Corbusier
Laval, Québec
Canada, H7S 2K8
Tel: (450) 668-3033
Fax: (450) 668-2695
e-mail: mi@microthermo.com

PROJECT NAME:

7 MOUNTING LOCATIONS & WIRE ROUTING

8 (TS) MOUNTING LOCATIONS & WIRE ROUTING
MULTI-DECK DISPLAY CASES

9	CURRENT MONITORING MPC & LOAD SHEDDING
---	--

DRAWN BY : D.P.	DESIGN BY : L.M.	APPROVED BY : A.H.	PROJECT NO : XXX-XXX
SCALE : N.T.S	DATE : 05-11-2004	REVISION : 00	DRAWN NO : EMS-104