



► **Stealth[®] PS Advanced Series:**
The Ultimate in Gearhead Performance

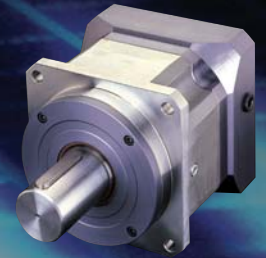
Stealth[®] Advanced PS is Bayside's highest performance servo gearhead. Available in 8 frame sizes and 12 gear ratios, you are guaranteed to find a Stealth[®] PS to fit your high performance servo applications.

8 Frame Sizes	
PS40	PS142
PS60	PS180
PS90	PS220
PS115	PS300

Ratios *	
3:1	25:1
4:1	30:1
5:1	40:1
7:1	50:1
10:1	70:1
15:1	100:1
20:1	* For PS40 & PS300 see Note (3)



Stealth® PS Advanced Series



Performance Specifications

	Units	Ratio	Frame Size								
			PS40	PS60	PS90	PS115	PS142	PS180	PS220	PS300	
Nominal Output Torque, $T_{nom r}$	Nm	3-10	5	25	74	170	294	735	1,413	3,616	
	in lb		42	220	650	1,500	2,600	6,500	12,500	32,000	
	Nm	15-50	9	34	107	226	396	1,017	1,808	4,520	
	in lb		75	300	950	2,000	3,500	9,000	16,000	40,000	
	Nm	70-100	8	28	90	203	339	893	1,582	4,181	
	in lb		67	250	800	1,800	3,000	7,900	14,000	37,000	
Maximum Acceleration Output Torque, $T_{acc r}$	Nm	3-10, 70-100	8	34	105	232	367	972	1,763	4,825	
	in lb		74	300	930	2,050	3,250	8,600	15,600	42,700	
	Nm	15-50	10	42	130	283	452	1,198	2,011	5,492	
	in lb		92	370	1,150	2,500	4,000	10,600	17,800	48,600	
Emergency⁽¹⁾ Stop Output Torque, $T_{em r}$	Nm	3-10, 70-100	19	78	243	537	853	2,237	4,068	11,119	
	in lb		170	690	2,150	4,750	7,550	19,800	36,000	98,400	
	Nm	15-50	24	96	299	655	1,040	2,757	4,520	12,656	
	in lb		210	850	2,650	5,800	9,200	24,400	40,000	112,000	
Nominal Input Speed, $N_{nom r}$	RPM	3-5	3,600	3,200	2,800	2,400	2,000	1,600	1,200	1,000	
	RPM	7-10	4,100	3,700	3,300	2,900	2,500	2,000	1,500	1,250	
	RPM	15-50	4,600	4,200	3,800	3,400	3,000	2,400	1,800	1,500	
	RPM	70-100	5,100	4,700	4,300	3,900	3,500	2,800	2,100	1,750	
Max. Input Speed, $N_{max r}$	RPM	3-100	6,000	6,000	5,300	4,500	3,800	3,000	2,300	1,900	
Standard Backlash⁽²⁾	arc min	3-10	10	6	6	4	4	4	4	4	
	arc min	15-100	14	8	8	6	6	6	6	6	
Low Backlash⁽²⁾	arc min	3-10	—	4	4	3	3	3	3	3	
	arc min	15-100	—	6	6	5	5	5	5	5	
Efficiency at Nominal Torque	%	3-10	97	97	97	97	97	97	97	97	
	%	15-100	94	94	94	94	94	94	94	94	
Noise Level⁽³⁾ at:											
	3,000 RPM	dB	3-100	68	68	68	68	70	—	—	—
	2,000 RPM	dB	3-100	—	—	—	—	—	70	70	70
Torsional Stiffness	Nm/arc min	3-100	2	3	12	23	44	110	210	360	
	in lb/arc min		16	26	106	204	389	973	1,858	3,185	
Maximum Weight	kg	3-10	0.4	1.3	3	7	14	26	49	103	
	lb		1.0	2.8	7	15	30	57	108	228	
	kg	15-100	0.6	1.7	5	10	20	35	71	149	
	lb		1.4	3.7	10	22	43	77	157	330	
Maximum Allowable Case Temperature	°C	3-100	← 100 → For applications requiring lower case temperature, consult factory								

(1) Maximum of 1,000 stops
 (2) Measured at 2% of rated torque
 (3) Measured at 1 meter

(4) PS40 is available in Ratios of: 4, 5, 7, 10, 16, 20, 25, 40, 50, 70 & 100:1
 PS300 is available in Ratios of: 4, 5, 7, 10, 20, 50, 70 & 100:1



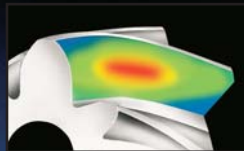
▶ **Stealth[®] PS Advanced Series:** **Get the Helical Advantage!**

Stealth[®] Advanced in the PS / RS Models incorporates the latest enhancement in gearhead technology:

- ▶ Latest technology in seals...reduce heat and wear
- ▶ Oil lubrication...reduces, friction and operating temperature
- ▶ Front output seal cover...captures and protects output seal



Helical Planetary Design - Helical gears have more tooth contact and greater face width than spur gears. This results in higher loads, smoother tooth engagement, quieter operation and lower backlash.



HeliCrown[®] - Bayside developed the HeliCrown gear tooth to further optimize Stealth's[®] performance. Since most vibration occurs at the entry and exit points of a gear tooth, HeliCrown eliminates metal only in these areas, *without sacrificing gear strength*, producing a quieter and stronger gear.



Plasma Nitriding - Bayside's in-house Plasma Nitriding process results in an ideal gear tooth. The surface is very hard (65 Rc) and the core is strong, but flexible (36 Rc). The result is a wear-resistant gear tooth that can withstand heavy shock, ensuring high accuracy for the life of the gearhead.



ServoMount[®] - Bayside's patented ServoMount design features a balanced input gear supported by a floating bearing. This unique design compensates for motor shaft runout and misalignment, ensuring TRUE alignment of the input sun gear with the planetary section, and allowing input speeds up to 6,000 RPM. ServoMount ensures error-free installation to any motor, in a matter of minutes.

Stealth's[®] superior design and construction deliver "The Helical Advantage":

- ▶ Strong...30% More Torque
 - ▶ Fast...6,000 RPM Input Speeds
 - ▶ Accurate...Less Than 3 Arc minutes Backlash
 - ▶ Quiet...Less Than 68dB Noise
- For Applications Requiring Lower dB, Consult Factory**

Plus... Over 97% Efficiency

11

Front Output Seal Cover

Completely captures and protects output seal and allows in-field seal replacement.

10

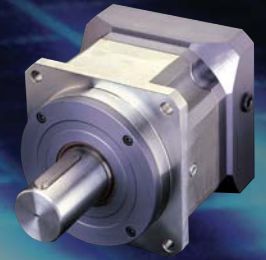
Output Wave Seal Technology

Creates a hydrodynamic film between seal and shaft and reducing heat and wear.

9

Magnetic Oil Fill Drain Plug

The magnetic plug attracts normal wear particles keeping them away from the gear mesh.



1

Helical Planetary

Provides smooth, quiet operation, high torque and high accuracy.

2

ServoMount®

Patented motor mounting design ensures error-free installation and the balanced pinion allows higher input speeds.

3

Precision Bearings

Large, deep groove bearings provide high speed capacity and radial loads.

4

HeliCrown®

Bayside's proprietary gear tooth geometry ensures quieter operation and higher loads than conventional gears.

11

9

8

5

2

1

10

6

3

4

7

5

Sealed Unit

Viton seals and O-Rings provide IP65 protection to prevent leaks and protect against harsh environments.

8

Oil Lubrication

Oil provides better lubrication, reduces friction and operating temperatures.

7

Integral Ring Gear

Cutting the ring gear directly into the housing allows for larger bearing and planet gears, delivering maximum power and stiffness in a minimum package.

6

Rigid Sun Gear

Perfectly aligned between two large bearings for maximum stiffness and strength.



Stealth[®] PS Advanced Series: Moment of Inertia

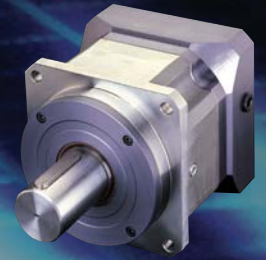
MOMENT OF INERTIA

Specifications:	Units	Ratio	Frame Size								
			PS40	PS60	PS90	PS115	PS142	PS180	PS220	PS300	
Small Motor Shaft Diameter Range	mm	3-100	3-8	6-12.7	6-16	9-19	12.7-24	15.9-35	24-48	28-65	
	in		0.118-0.315	0.236-0.500	0.236-0.630	0.354-0.748	0.500-0.944	0.626-1.378	0.945-1.89	1.10-2.56	
	gm cm sec²	3	—	0.176	0.784	2.34	7.81	28.6	—	—	
	oz in sec²		—	0.002	0.011	0.033	0.109	0.397	—	—	
	gm cm sec²	4,5	0.0140	0.101	0.486	1.87	4.92	17.6	62.6	284	
	oz in sec²		0.0002	0.001	0.007	0.026	0.068	0.244	0.869	3.95	
	gm cm sec²	7,10	0.0092	0.063	0.298	0.960	2.68	9.24	34.3	136	
	oz in sec²		0.0001	0.001	0.004	0.013	0.037	0.128	0.476	1.88	
	gm cm sec²	15	—	0.092	0.420	1.60	4.17	15.8	51.0	—	
	oz in sec²		—	0.001	0.006	0.022	0.058	0.219	0.708	—	
	gm cm sec²	16,20,25	0.0131	0.098	0.444	1.73	4.50	16.7	53.3	219	
	oz in sec²		0.0002	0.001	0.006	0.024	0.063	0.232	0.741	3.05	
	gm cm sec²	30-100	0.0083	0.054	0.247	0.760	2.18	7.450	27.1	93.9	
	oz in sec²		0.0001	0.001	0.003	0.011	0.030	0.104	0.377	1.30	
	Large Motor Shaft Diameter Range	mm	3-100	8-10	12.7-16	16-19	19-24	24-35	35-42	48-55	—
		in		0.135-0.394	0.500-0.630	0.630-0.748	0.748-0.944	0.944-1.38	1.38-1.65	1.89-2.17	—
		gm cm sec²	3	—	0.253	1.07	3.25	10.6	37.8	111	—
		oz in sec²		—	0.004	0.015	0.045	0.148	0.526	1.54	—
gm cm sec²		4,5	0.0483	0.185	0.745	2.70	7.51	25.6	72.4	—	
oz in sec²			0.0007	0.003	0.010	0.038	0.104	0.356	1.01	—	
gm cm sec²		7,10	0.0414	0.143	0.566	1.70	5.01	15.8	44.1	—	
oz in sec²			0.0006	0.002	0.008	0.024	0.070	0.219	0.613	—	
gm cm sec²		15	—	0.176	0.685	2.43	6.76	23.8	60.8	—	
oz in sec²			—	0.002	0.010	0.034	0.094	0.331	0.845	—	
gm cm sec²		16,20,25	0.0474	0.182	0.715	2.56	7.09	24.7	62.9	—	
oz in sec²			0.0007	0.003	0.010	0.036	0.099	0.344	0.874	—	
gm cm sec²		30-100	0.0405	0.134	0.507	1.50	4.50	14.0	37.0	—	
oz in sec²			0.0006	0.002	0.007	0.021	0.063	0.195	0.513	—	

Note: All Moment of Inertia values are as reflected at the input shaft of the gearhead.

Specification are subject to change without notice

Stealth[®] PS Advanced Series: Output Shaft Load Rating



Formulas to calculate Radial Load (P_{rx}) at any distance "X" from the gearhead mounting surface.

$$P_{rx} = (P_r)(37\text{mm}) / (22\text{mm} + X)$$

$$P_{rx} = (P_r)(1.46\text{in}) / (0.87\text{in} + X)$$

$$P_{rx} = (P_r)(57\text{mm}) / (35\text{mm} + X)$$

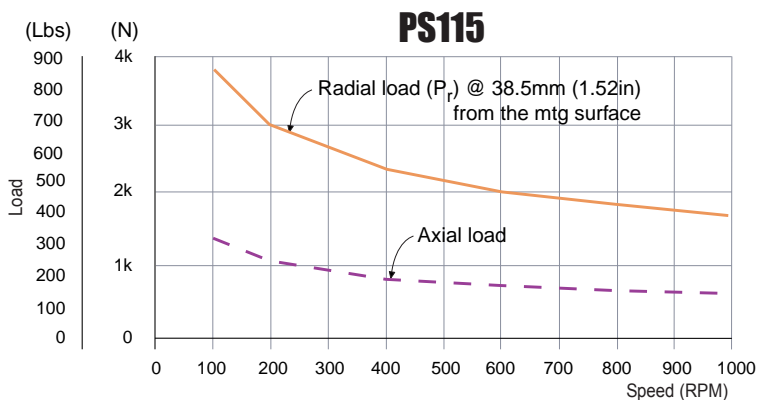
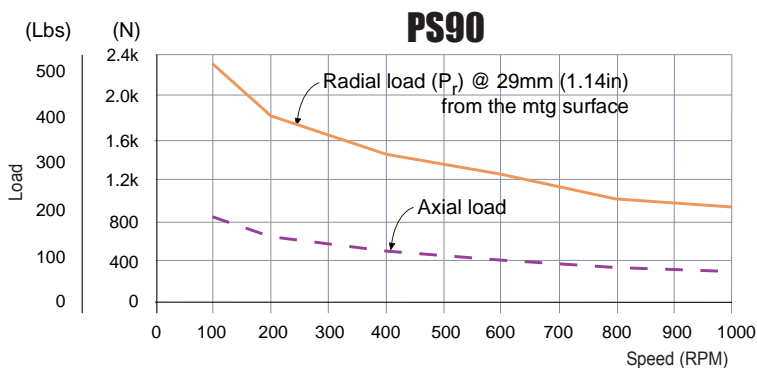
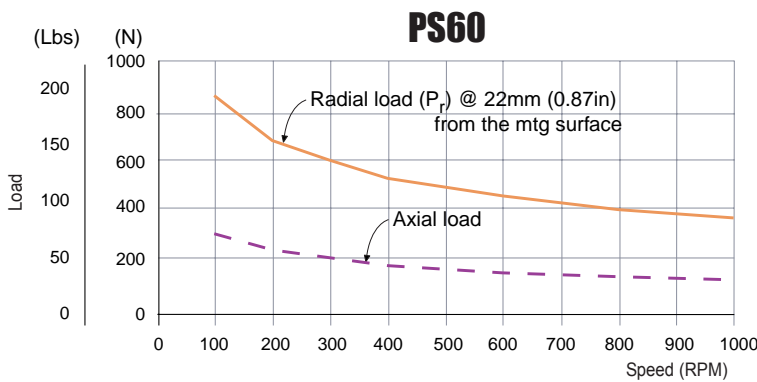
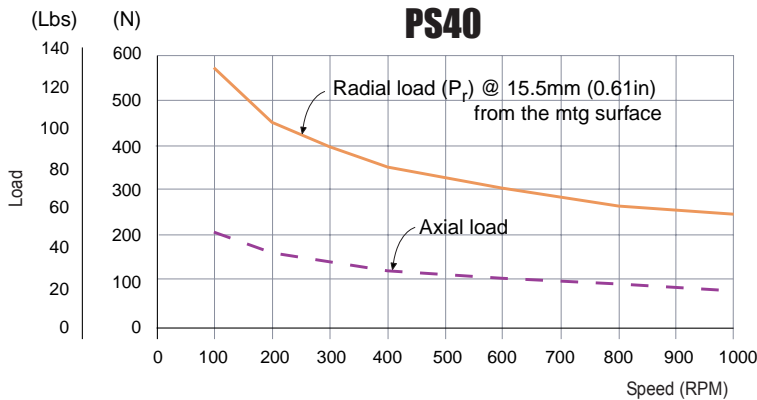
$$P_{rx} = (P_r)(2.24\text{in}) / (1.38\text{in} + X)$$

$$P_{rx} = (P_r)(74\text{mm}) / (45\text{mm} + X)$$

$$P_{rx} = (P_r)(2.91\text{in}) / (1.77\text{in} + X)$$

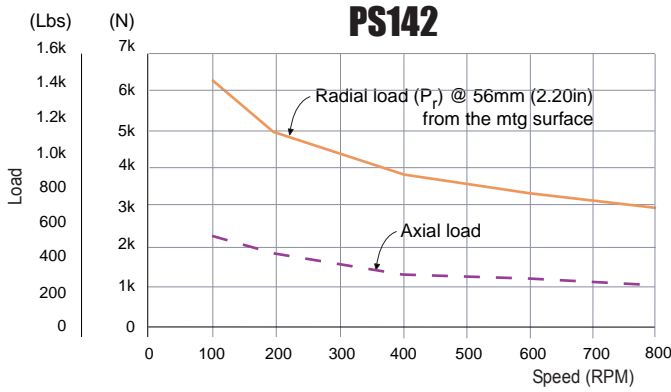
$$P_{rx} = (P_r)(95\text{mm}) / (57\text{mm} + X)$$

$$P_{rx} = (P_r)(3.74\text{in}) / (2.24\text{in} + X)$$





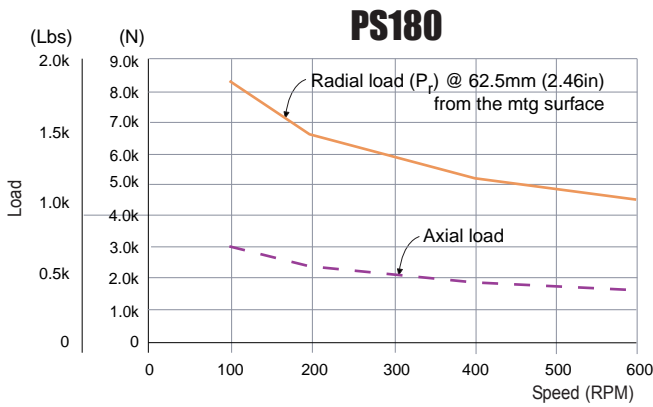
Stealth® PS Advanced Series: Output Shaft Load Rating



Formulas to calculate Radial Load (P_{rx}) at any distance "X" from the gearhead mounting surface.

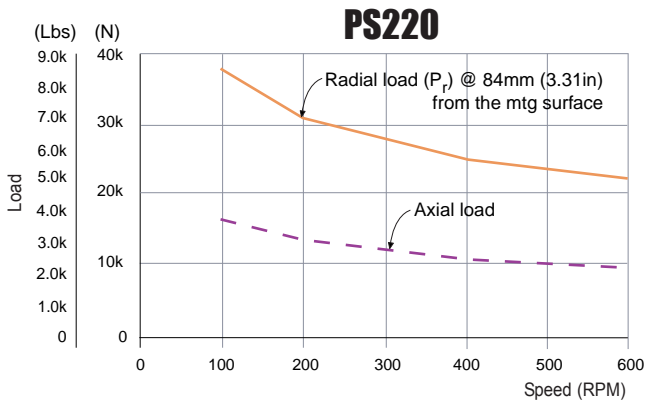
$$P_{rx} = (P_r)(127\text{mm}) / (71\text{mm} + X)$$

$$P_{rx} = (P_r)(5\text{in}) / (2.79\text{in} + X)$$



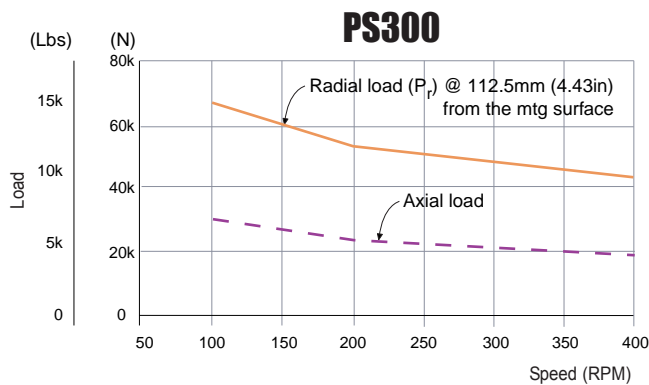
$$P_{rx} = (P_r)(138\text{mm}) / (76\text{mm} + X)$$

$$P_{rx} = (P_r)(5.43\text{in}) / (2.99\text{in} + X)$$



$$P_{rx} = (P_r)(190\text{mm}) / (106\text{mm} + X)$$

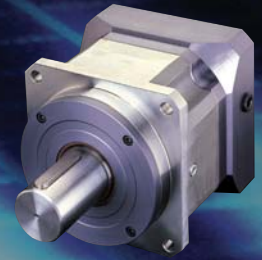
$$P_{rx} = (P_r)(7.48\text{in}) / (4.17\text{in} + X)$$



$$P_{rx} = (P_r)(268\text{mm}) / (156\text{mm} + X)$$

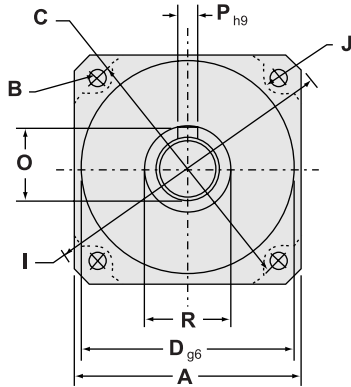
$$P_{rx} = (P_r)(10.55\text{in}) / (6.14\text{in} + X)$$

Stealth[®] PS Advanced Series

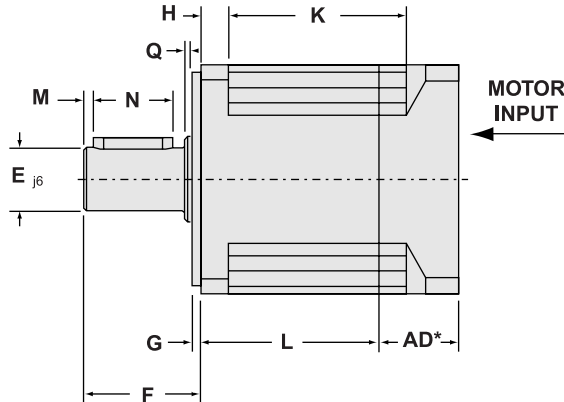


Dimensions

OUTPUT VIEW



SIDE VIEW



Frame Size	A Square Flange		B Bolt Hole		C Bolt Circle		D Pilot Diameter		E Output Shaft Diameter		F Output Shaft Length		G Pilot Thickness		H Flange Thickness		I Housing Diameter		J Housing Recess	
	(mm)	(in)	(mm)	(in)	(mm)	(in)	(mm)	(in)	(mm)	(in)	(mm)	(in)	(mm)	(in)	(mm)	(in)	(mm)	(in)	(mm)	(in)
PS40	42	1.654	3.4	0.134	50	1.969	35	1.378	13	0.512	26	1.024	5.5	0.217	5	0.197	56	2.205	3.5	0.138
PS60	60	2.362	5.5	0.217	70	2.756	50	1.969	16	0.630	37	1.457	8	0.315	8	0.315	80	3.150	5	0.197
PS90	90	3.543	6.5	0.256	100	3.937	80	3.150	22	0.866	48	1.890	11	0.433	10	0.394	116	4.567	6.5	0.256
PS115	115	4.528	8.5	0.335	130	5.118	110	4.331	32	1.260	65	2.559	13	0.512	14	0.551	152	5.984	7.5	0.295
PS142	142	5.591	11	0.433	165	6.496	130	5.118	40	1.575	97	3.819	15	0.591	15	0.591	185	7.283	10	0.394
PS180	182	7.165	13	0.512	215	8.465	160	6.299	55	2.165	105	4.134	20	0.787	16	0.630	240	9.449	16	0.630
PS220	220	8.661	17	0.669	250	9.843	180	7.087	75	2.953	138	5.433	30	1.181	22	0.866	290	11.417	16	0.630
PS300	305	12.008	21	0.827	350	13.780	250	9.843	100	3.937	190	7.480	35	1.378	26	1.024	400	15.748	18	0.709

Frame Size	K1 Recess Length (For Ratio ≤ 10:1)		K2 Recess Length (For Ratio > 10:1)		L1 Length (For Ratio ≤ 10:1)		L2 Length (For Ratio > 10:1)		M Dist. From Shaft End		N Keyway Length		O Key Height		P Keyway Width		Q Shoulder Height		R Shoulder Diameter	
	(mm)	(in)	(mm)	(in)	(mm)	(in)	(mm)	(in)	(mm)	(in)	(mm)	(in)	(mm)	(in)	(mm)	(in)	(mm)	(in)	(mm)	(in)
PS40	32	1.260	53	2.087	30	1.181	50.7	1.996	2	0.079	16	0.630	15	0.591	5	0.197	1	0.039	15	0.591
PS60	37	1.457	67	2.638	36.7	1.445	66.7	2.626	2	0.079	25	0.984	18	0.709	5	0.197	0.5	0.020	22	0.866
PS90	48	1.890	88	3.465	49.5	1.949	89	3.504	3	0.118	32	1.260	24.5	0.965	6	0.236	0.5	0.020	35	1.378
PS115	62	2.441	110	4.331	61.7	2.429	109.5	4.311	5	0.197	40	1.575	35	1.378	10	0.394	1	0.039	45	1.772
PS142	82	3.228	143	5.630	76.5	3.012	138	5.433	5	0.197	63	2.480	43	1.693	12	0.472	3	0.118	55	2.165
PS180	88	3.465	158	6.220	83.5	3.287	153.5	6.043	6	0.236	70	2.756	59	2.323	16	0.630	3	0.118	70	2.756
PS220	116	4.567	218	8.583	108	4.252	210.5	8.287	6	0.236	90	3.543	79.5	3.130	20	0.787	3	0.118	95	3.740
PS300	160	6.299	332	13.071	158	6.220	292	11.496	7	0.276	140	5.512	106	4.173	28	1.102	3	0.118	140	5.512

*AD=Adapter Length. Adapter will vary, depending on motor.
Consult Internet (www.baysidemotion.com) for details or call Bayside.
Specifications are subject to change without notice.

How to Order

P S 1 4 2 - 0 0 3 - X X X L H

FRAME SIZE	RATIO	SPECIAL	BACKLASH	ORIENTATION
40** 142	003 010 030	(Factory Issued)	L = Low S = Standard	H = Horizontal orientation U = Output shaft pointing up D = Output shaft pointing down
60 180	004 015 040			
90 220	005 020 050			
115 300***	007 025 070 100			(For other orientations consult the factory)

1. Pick frame size and ratio.
2. Pick backlash and orientation.
3. Specify motor make and model for mounting kit.

PS Gearheads are supported by a worldwide network of offices and local distributors. Call **1-800-305-4555** for application engineering assistance or for the name of your local distributor. Information can also be obtained at www.baysidemotion.com.

** PS40 is available in Ratios of : 4, 5, 7, 10, 16, 20, 25, 40, 50, 70 & 100:1
*** PS300 is available in Ratios of: 4, 5, 7, 10, 20, 50, 70 & 100:1



► ***Stealth[®] PX Series:***
Best Technology . . Best Value

Stealth[®] PX incorporates Bayside's helical planetary technology in a lower cost package. Available in NEMA and Metric frame sizes, Stealth[®] PX delivers high torque and quiet, smooth operation for less demanding servo applications.

3 Frame Sizes

PX60	PX23
PX90	PX34
PX115	PX42

Ratios

3:1	10:1	30:1
4:1	15:1	50:1
5:1	20:1	70:1
7:1	25:1	100:1



Stealth® PX Series



Performance Specifications

	Units	Ratio	Frame Size			
			PX60	PX90	PX115	
Nominal Output Torque, $T_{nom r}$	Nm	3-5	18	45	124	
	in lb		160	400	1,100	
	Nm	7-15	22	57	147	
	in lb		190	500	1,300	
	Nm	20-50	28	74	181	
	in lb		250	650	1,600	
Max. Acceleration Output Torque, $T_{acc r}$	Nm	3-15, 70-100	26	71	175	
	in lb		230	630	1,550	
	Nm	20-50	32	86	215	
	in lb		280	760	1,900	
	Emergency ⁽¹⁾ Stop Output Torque, $T_{em r}$	Nm	3-15, 70-100	60	164	407
		in lb		530	1,450	3,600
Nm		20-50	74	198	497	
in lb			650	1,750	4,400	
Nominal Input Speed, $N_{nom r}$		RPM	3-5	3,200	2,800	2,400
		RPM	7-15	3,700	3,300	2,900
	RPM	20-50	4,200	3,800	3,400	
	RPM	70-100	4,700	4,300	3,900	
Maximum Input Speed, N_{maxr}	RPM	3-100	6,000	5,300	4,500	
Standard Backlash ⁽²⁾	arc min	3-10	14	14	12	
	arc min	15-100	16	16	14	
Low Backlash ⁽²⁾	arc min	3-10	10	10	8	
	arc min	15-100	12	12	10	
Efficiency at Nominal Torque	%	3-10	96	96	96	
	%	15-100	93	93	93	
Noise Level ⁽³⁾ at: 3,000 RPM	dB	3-100	70	70	70	
Torsional Stiffness	Nm / arc min	3-100	3	10	20	
	in lb / arc min		22	88	177	
Maximum Weight	kg	3-10	1	3	7	
	lb		3	7	15	
	kg	15-100	2	5	10	
	lb		4	10	21	
Max. Allowable Case Temperature	°C	3-100	← 100 →			

Specifications:	Units	Ratio	Frame Size		
			PX60	PX90	PX115
Moment of Inertia ⁽⁴⁾	gm cm sec ²	3	0.212	0.918	2.53
	oz in sec ²		0.003	0.013	0.035
	gm cm sec ²	4,5	0.134	0.590	1.92
	oz in sec ²		0.002	0.008	0.027
	gm cm sec ²	7,10	0.092	0.372	1.12
	oz in sec ²		0.001	0.005	0.016
	gm cm sec ²	15	0.122	0.524	1.64
	oz in sec ²		0.002	0.007	0.023
	gm cm sec ²	20,25	0.128	0.548	1.78
	oz in sec ²		0.002	0.008	0.025
	gm cm sec ²	30-100	0.083	0.322	0.924
	oz in sec ²		0.001	0.004	0.013

(1) Maximum of 1,000 stops
(2) Measured at 2% of rated torque.

(3) Measured at 1 meter
Specification are subject to change without notice

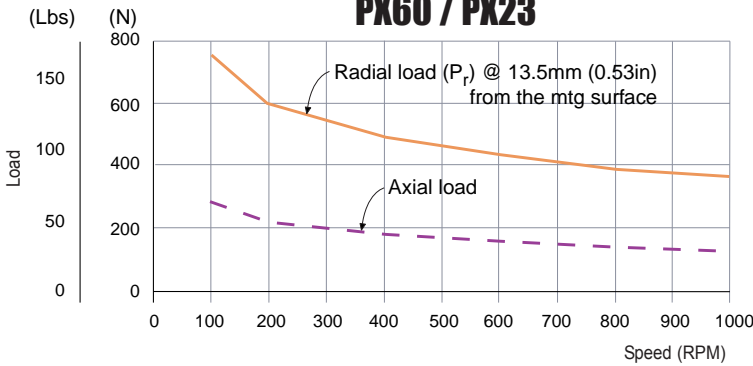
(4) All Moment of Inertia values are as reflected at the input shaft of the gearhead.



Stealth® PK Series: Output Shaft Load Rating

Formulas to calculate Radial Load (P_{rx}) at any distance "X" from the gearhead mounting surface.

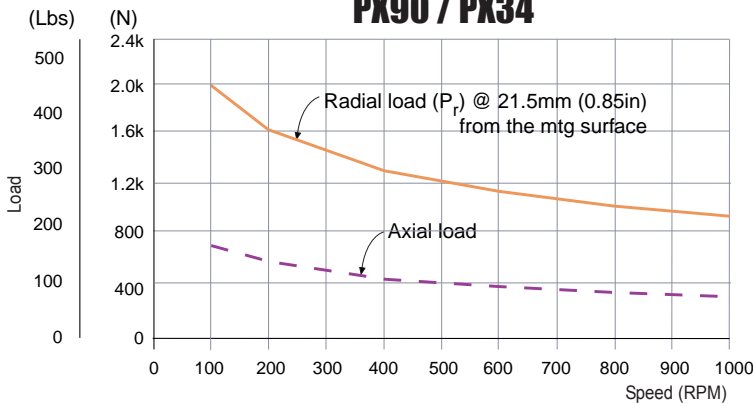
PX60 / PX23



$$P_{rx} = (P_r)(54\text{mm}) / (41\text{mm} + X)$$

$$P_{rx} = (P_r)(2.13\text{in}) / (1.61\text{in} + X)$$

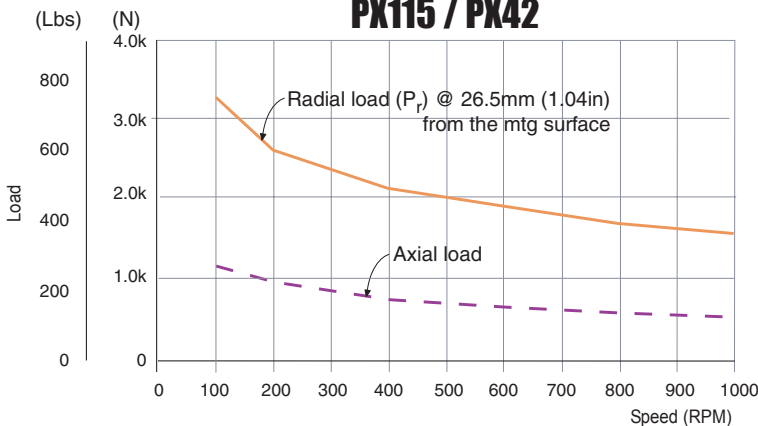
PX90 / PX34



$$P_{rx} = (P_r)(73\text{mm}) / (52\text{mm} + X)$$

$$P_{rx} = (P_r)(2.87\text{in}) / (2.05\text{in} + X)$$

PX115 / PX42



$$P_{rx} = (P_r)(89\text{mm}) / (63\text{mm} + X)$$

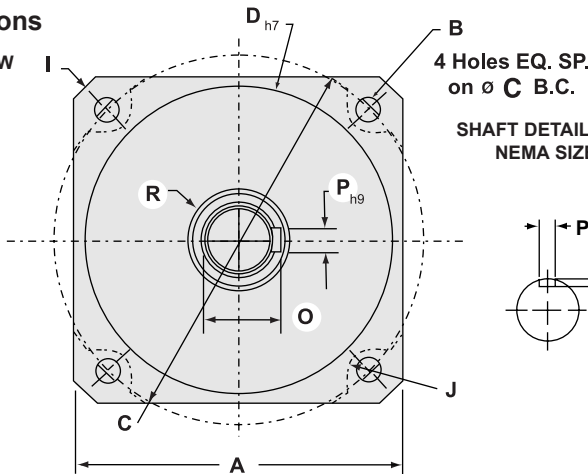
$$P_{rx} = (P_r)(3.5\text{in}) / (2.48\text{in} + X)$$

Stealth® PX Series



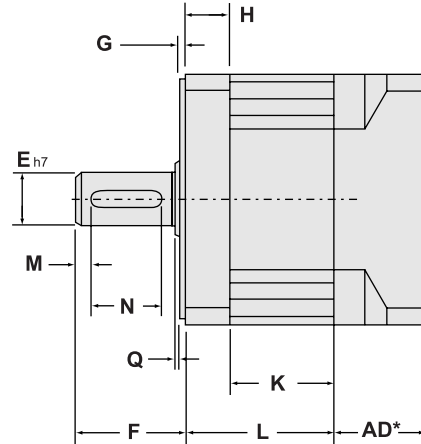
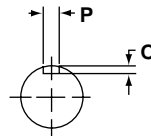
Dimensions

OUTPUT VIEW



4 Holes EQ. SP. on \varnothing C B.C.

SHAFT DETAILS FOR NEMA SIZES



SIDE VIEW

MOTOR INPUT

METRIC SIZES

Frame Size	A Square Flange		B Bolt Hole		C Bolt Circle		D Pilot Diameter		E Output Shaft Diameter		F Output Shaft Length		G Pilot Thickness		H Flange Thickness		I Housing Diameter		J Housing Recess	
	(mm)	(in)	(mm)	(in)	(mm)	(in)	(mm)	(in)	(mm)	(in)	(mm)	(in)	(mm)	(in)	(mm)	(in)	(mm)	(in)	(mm)	(in)
PX60	60	2.362	5.5	0.217	70	2.756	50	1.969	16	0.630	25	0.984	2.5	0.098	13	0.512	80	3.150	5.5	0.217
PX90	90	3.543	6.5	0.256	100	3.937	80	3.150	20	0.787	40	1.575	3	0.118	17	0.669	116	4.567	6.5	0.256
PX115	115	4.528	8.5	0.335	130	5.118	110	4.331	24	0.945	50	1.969	3.5	0.138	20	0.787	152	5.984	7.5	0.295

Frame Size	K1 Recess Length (For Ratio \leq 10:1)		K2 Recess Length (For Ratio $>$ 10:1)		L1 Length (For Ratio \leq 10:1)		L2 Length (For Ratio $>$ 10:1)		M Dist. From Shaft End		N Keyway Length		O Key Height		P Keyway Width		Q Shoulder Height		R Shoulder Diameter	
	(mm)	(in)	(mm)	(in)	(mm)	(in)	(mm)	(in)	(mm)	(in)	(mm)	(in)	(mm)	(in)	(mm)	(in)	(mm)	(in)	(mm)	(in)
PX60	30	1.181	60	2.362	43	1.693	73	2.874	3	0.118	16	0.630	18	0.709	5	0.197	1	0.039	22	0.866
PX90	39.5	1.555	79	3.110	56.5	2.224	96	3.780	5	0.197	28	1.102	22.5	0.886	6	0.236	1	0.039	35	1.378
PX115	47.8	1.882	95.6	3.764	67.8	2.669	115.6	4.551	7	0.276	32	1.260	27	1.063	8	0.315	1.5	0.059	35	1.378

*AD=Adapter Length. Adapter will vary, depending on motor. Consult Internet (www.baysidemotion.com) for details or call Bayside.

NEMA SIZES

Frame Size	B Bolt Hole		C Bolt Circle		D Pilot Diameter		E Output Shaft Diameter		F Output Shaft Length		N Keyway Length		O Keyway Depth		P Keyway Width	
	(in)	(mm)	(in)	(mm)	(in)	(mm)	(in)	(mm)	(in)	(mm)	(in)	(mm)	(in)	(mm)	(in)	(mm)
PX23	0.195	4.953	2.625	66.675	1.5	38.100	0.375	9.525	1	25.400	0.75 flat	19.050 flat	0.015 flat	0.381 flat	—	—
PX34	0.217	5.512	3.875	98.425	2.875	73.025	0.5	12.700	1.25	31.750	1.063	27.000	0.072	1.829	0.125	3.175
PX42	0.281	7.137	4.95	125.730	2.187	55.550	0.625	15.875	1.5	38.100	1.142	29.007	0.094	2.388	0.188	4.775

NOTE: NEMA sizes have 20% lower torque/stiffness ratings due to smaller output shaft diameter.

Specifications are subject to change without notice.

How to Order

Order Numbering Example:

P X 1 1 5 - 0 1 0 - X X X L B

FRAME SIZE

(Metric Sizes)	(NEMA Sizes)
60	23
90	34
115	42
142 (1)	56 (1) (1) Available upon request . Please contact Bayside for more information.

RATIO

003	010	030
004	015	050
005	020	070
007	025	100

SPECIAL

(Factory Issued)

OPTIONAL

LOW BACKLASH

1. Pick frame size and ratio.
2. Pick options.
3. Specify motor make and model for mounting kit.

PX Gearheads are supported by a worldwide network of offices and local distributors. Call **1-800-305-4555** for application engineering assistance or for the name of your local distributor. Information can also be obtained at www.baysidemotion.com.