

Bayside Motion Group, a leading innovator within the motion control industry, manufactures precision automation components, stages and systems for the biotechnology industry. Whether your project requires a standard Bayside product or a complete automation solution, Bayside is ready to support your project from start to finish.

Biotechnology Applications

- ▶ Drug Discovery
- ▶ SNP Technologies
- ▶ Micro Arrayers
- ▶ Microscopy
- ▶ Proteomics
- ▶ Genomics
- ▶ Lab on Chip Technology
- ▶ High Throughput Screening

High Performance Solutions

- ▶ Sub Micron Positioning
- ▶ High Speeds
- ▶ Smooth Motion
- ▶ PC Based Control
- ▶ Fast Move and Settle
- ▶ High Precision
- ▶ Sub Micron Repeatability
- ▶ High Stiffness

“Your partner in process automation”

Bayside's Six Step Project Process

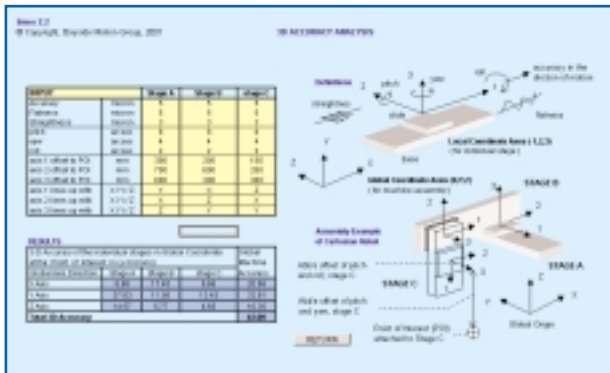
1 Understanding the Need

Whether your project is related to building biotechnology, drug discovery machines, or other high precision general manufacturing equipment, Bayside's first objective is to understand your engineering needs.

Our Industry Specialists review your positioning specifications for completeness, clarity, consistency and feasibility; as well as the value that each required specification has towards the desired manufacturing process.

2 System Analysis

Once an engineered system and its requirements have been reviewed and defined, Bayside's engineering team uses a proprietary software (BIMO) to gain a better qualitative understanding of the proposed system value as well as a quantitative understanding of optimal component sizing.



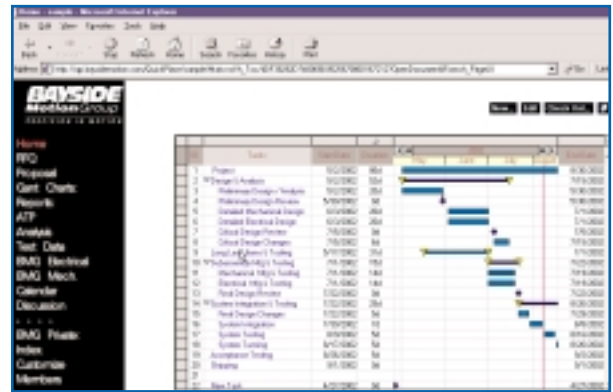
BIMO Analysis Tool

3 Solution Proposal

Equipped with an in-depth understanding of the need and a proposed solution, our system application engineers prepare a detailed document which highlights the requirements, cost effectiveness of various solution options, recommended configuration, selected components, price quotation, and delivery schedule.

4 Project Management

Each engineered system is assigned and led by a Project Manager who is responsible for ensuring that the projects process is begun and completed in a smooth, orderly and precise manner. To ensure accurate, up-to-date communication, the Project Manager utilizes a secured, web-based communication tool (QuickPlace) to keep all involved parties apprised of the project progress and details. The detail kept in the quickplace includes: Project Members, RFQ, Proposal, ATP, Gantt Charts, Tasks, Reports, System Analysis, Test results, Electrical Engineering, Mechanical Engineering and Discussion History.



View of QuickPlace

5 Acceptance Test

The Acceptance Test Procedure (ATP) is a mutually agreed upon document, which outlines the procedures, tools and methods used to verify that all project performances meet desired specifications. The acceptance test procedure is prepared well in advance to allow for the customer representatives to review it prior to their presence in this stage of the project.

6 After Sales Support

When the engineered system has been accepted by the customer, a Bayside engineer is assigned to follow up the delivery at the customer's site. The engineer inspects the machine and powers it up, training is also provided to the customer on site to assure proper readiness to start operation and maintain the machine.

Throughout the life cycle of the machine, Bayside continuously monitors the status of the project and provides quick support when needed.



Acceptance Testing