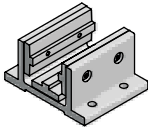
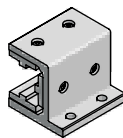
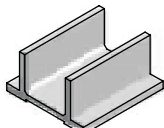
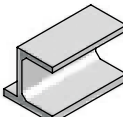
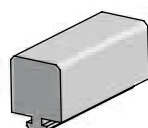

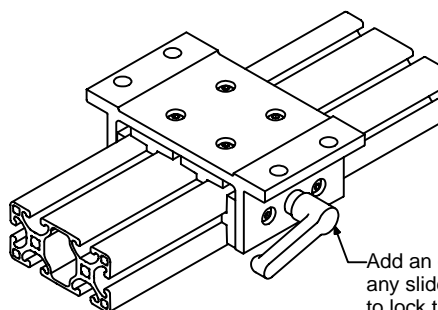
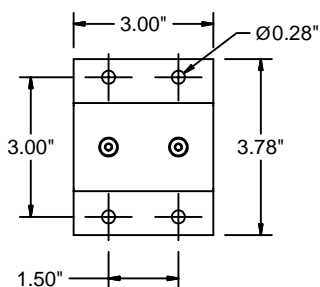
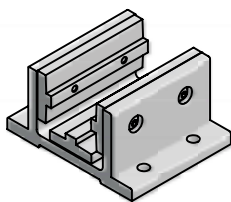


Section 7

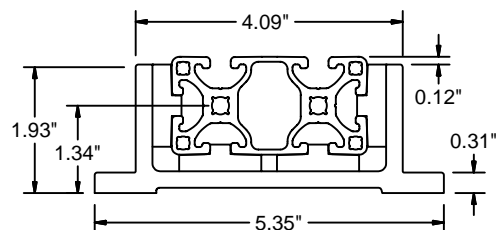
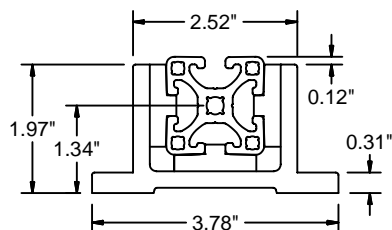
Slide Blocks

Slide Blocks			
1.5" Series	104		
1.5" Series High Cycle	106		
1" Series	108		
Side Flange Slide Blocks			
1.5" Series	105		
1.5" Series High Cycle	107		
1" Series	109		
Slide Profiles	110		
Side Flange Profiles	110		
UHMW Slide Bar Profiles	111		
UHMW Slide Strip Profiles	111		

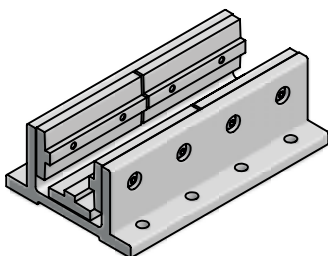
Standard



Add an optional locking handle (pg 107) to any slide block, to provide a mechanism to lock the slide block in place anywhere on the extrusion.



30-1503



Application

Cost effective construction for bearing blocks and moveable rails. They utilize glide pads oriented within t-slots.

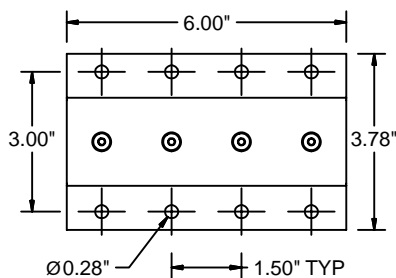
Technical Data

Aluminum, Clear Anodized
UHMW Glide Pads

Recommended Fasteners (Order Separately)

30-1503 & 30-1506
Screws Use any 1/4 BHCS or SHCS

30-3003 & 30-3006
Screws Use any 5/16 BHCS or SHCS



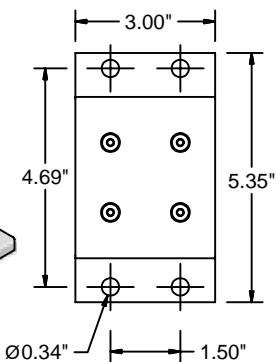
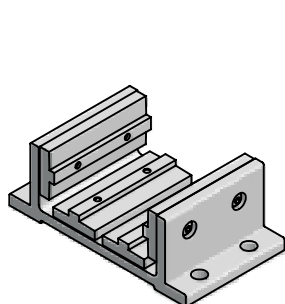
Ordering Information

Slide Block 1.5 - 3" Long
Slide Block 1.5 - 6" Long
Slide Block 3 - 3" Long
Slide Block 3 - 6" Long

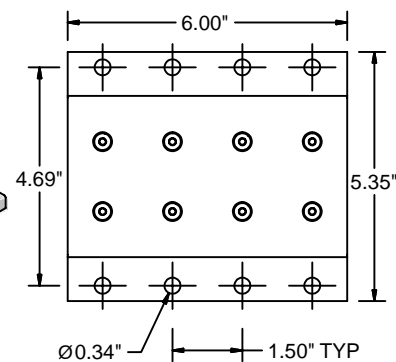
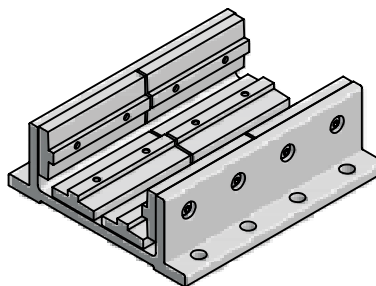
Unit	Weight	Part #
Each	0.68 lb	30-1503
Each	1.37 lb	30-1506
Each	0.84 lb	30-3003
Each	1.68 lb	30-3006

*You can create custom length slide blocks by ordering the desired length profile (page 110) and individual slide pads (page 111).

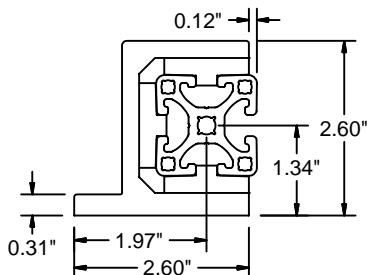
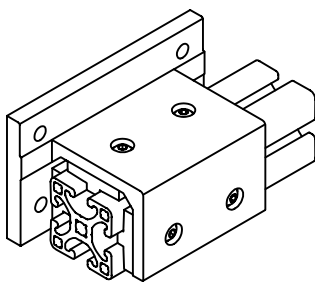
30-1506



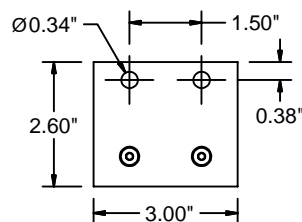
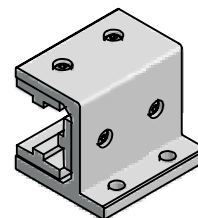
30-3003



30-3006



Side Flange



30-1513

Application



Cost effective construction for bearing blocks and moveable rails. They utilize glide pads oriented within t-slots.

Technical Data

Aluminum, Clear Anodized
 UHMW Glide Pads

Recommended Fasteners (Order Separately)

30-1513 & 30-1516

Screws Use any 5/16 BHCS or SHCS

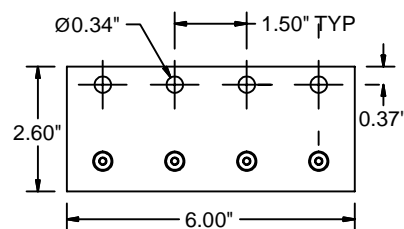
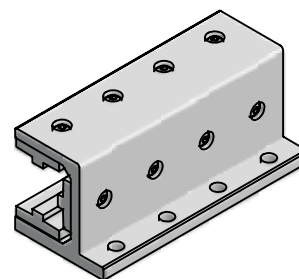
30-3023

Screws Use any 1/4 BHCS or SHCS

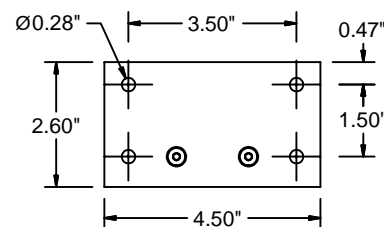
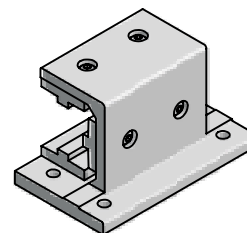
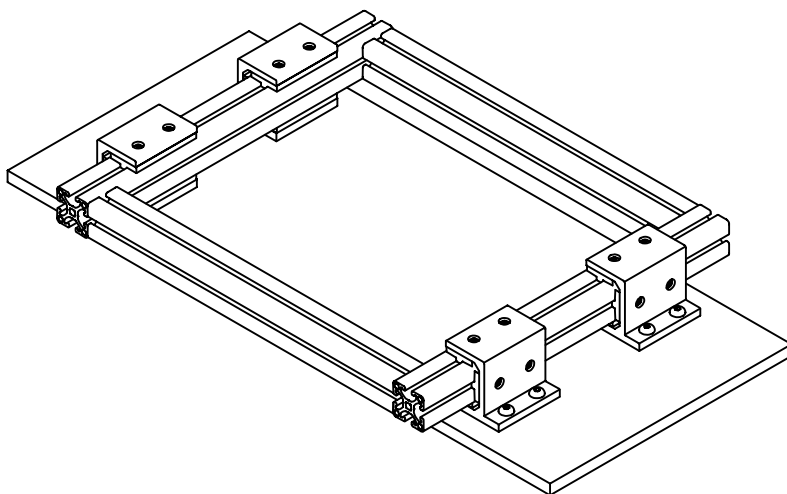
Ordering Information

Ordering Information	Unit	Weight	Part #
Slide Block Side Flange A 1.5 - 3" Long	Each	0.68 lb	30-1513
Slide Block Side Flange A 1.5 - 6" Long	Each	1.37 lb	30-1516
Slide Block Side Flange B 1.5 - 3" Long	Each	0.82 lb	30-3023

*You can create custom length slide blocks by ordering the desired length profile (page 110) and individual slide pads (page 111).

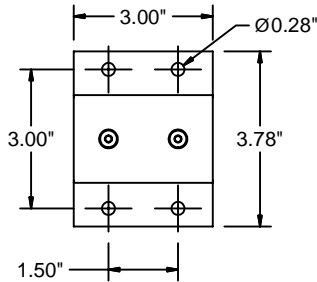
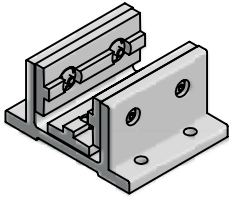
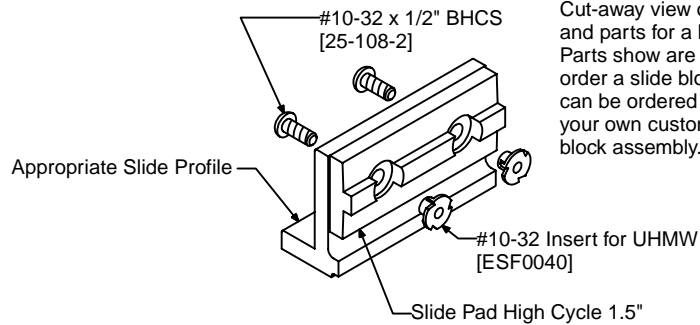


30-1516

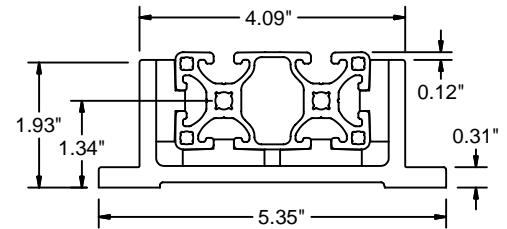
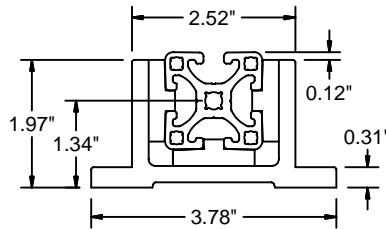


30-1523

Slide
 Blocks

High Cycle**30-1503HC**

Cut-away view of the assembly and parts for a high cycle slide. Parts show are included when you order a slide block assembly, but can be ordered separately to make your own custom high cycle side block assembly.

**Application**

Cost effective construction for bearing blocks where rapid acceleration and deceleration takes place.

Technical Data

Aluminum, Clear Anodized
UHMW Glide Pads

Recommended Fasteners (Order Separately)

30-1503HC & 30-1506HC

Screws Use any 1/4 BHCS or SHCS

30-3003HC & 30-3006HC

Screws Use any 5/16 BHCS or SHCS

Ordering Information

Slide Block High Cycle 1.5 - 3" Long

Slide Block High Cycle 1.5 - 6" Long

Slide Block High Cycle 3 - 3" Long

Slide Block High Cycle 3 - 6" Long

Unit

Each

Each

Each

Each

Weight

0.68 lb

1.37 lb

0.84 lb

1.68 lb

Part #

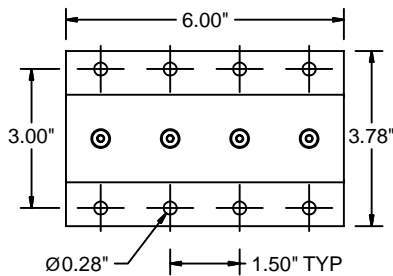
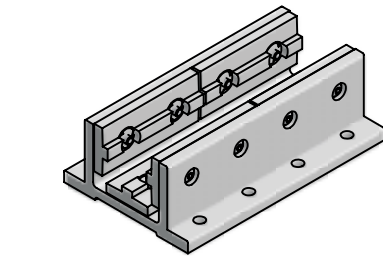
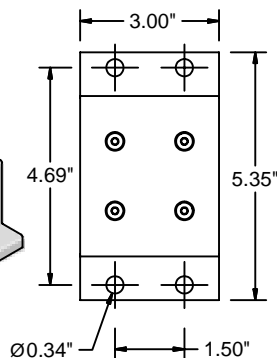
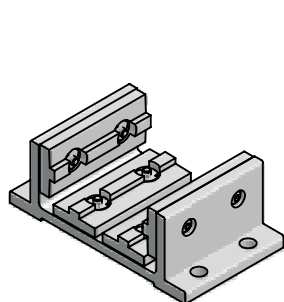
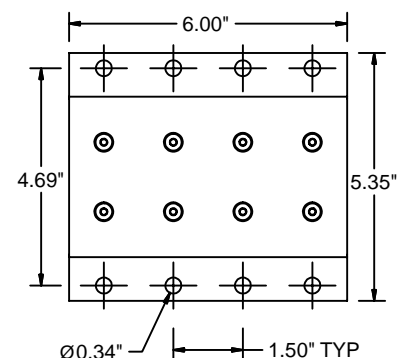
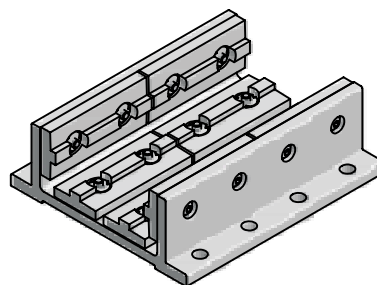
30-1503HC

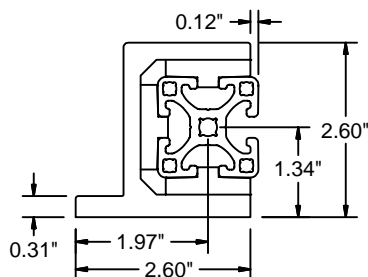
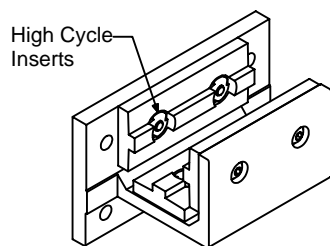
30-1506HC

30-3003HC

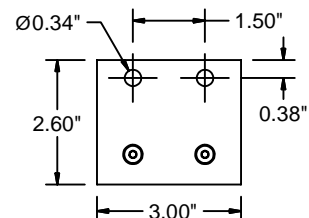
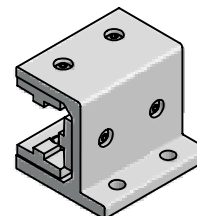
30-3006HC

*You can create custom length slide blocks by ordering the desired length profile (page 110) and individual slide pads.

**30-1506HC****30-3003HC****30-3006HC**



High Cycle Side Flange

**30-1513HC**

Application



Cost effective construction for bearing blocks where rapid acceleration and deceleration takes place.

Technical Data

Aluminum, Clear Anodized
UHMW Glide Pads

Recommended Fasteners (Order Separately)

30-1513HC & 30-1516HC

Screws Use any 5/16 BHCS or SHCS

30-3023HC

Screws Use any 1/4 BHCS or SHCS

Ordering Information

Side Flange A High Cycle 1.5 - 3" Long

Each

Weight

0.68 lb

Part #

30-1513HC

Side Flange A High Cycle 1.5 - 6" Long

Each

1.37 lb

30-1516HC

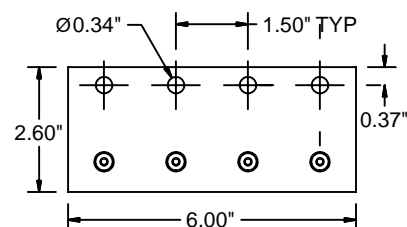
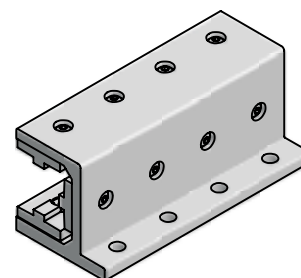
Side Flange B High Cycle 3 - 3" Long

Each

0.82 lb

30-3023HC

*You can create custom length slide blocks by ordering the desired length profile (page 110) and individual slide pads.

**30-1516HC**

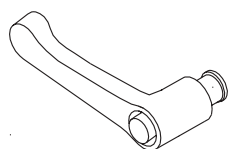
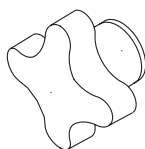
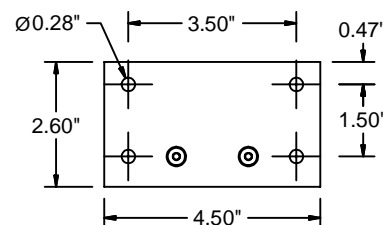
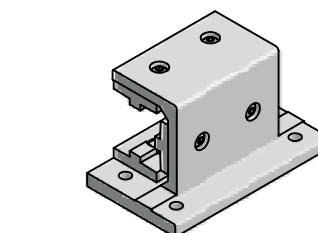
Application



These clamp accessories provide positioning and adjustment for 1.5" Series slide units. Handles provide a mechanism to lock the slide block in place anywhere on the extrusion.

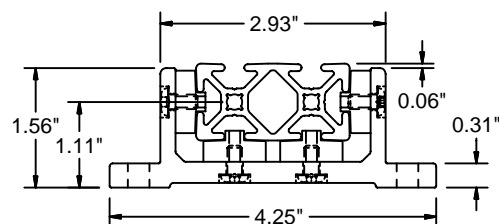
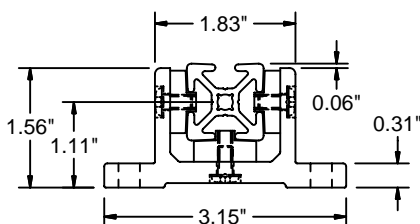
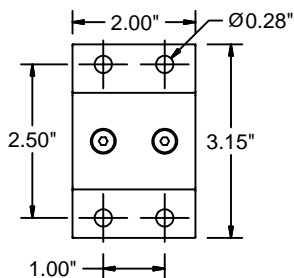
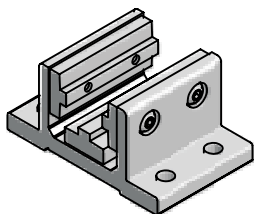
Slide extrusions and pads can be drilled to accept clamp accessories.

Description	Width	Depth	Part #
Ratcheting L-Handle	2.48	1.29	30-0001
Wing Nut	1.50	0.81	30-0013
Star Handle	1.57	1.05	30-0015

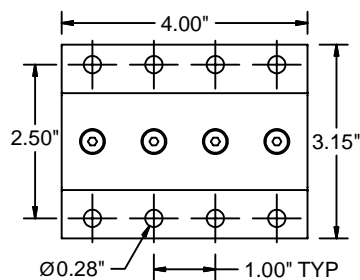
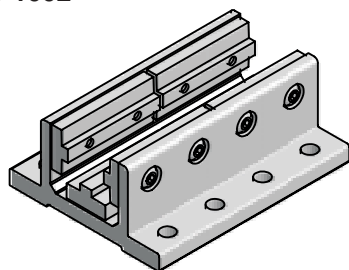
**30-0011****30-0013****30-0015****30-1523HC**

Slide
Blocks

Standard



30-1002



Application

Cost effective construction for bearing blocks and moveable rails. They utilize glide pads oriented within t-slots.

Technical Data

Aluminum, Clear Anodized
UHMW Glide Pads

Recommended Fasteners (Order Separately)

Screws Use any 1/4 BHCS or SHCS

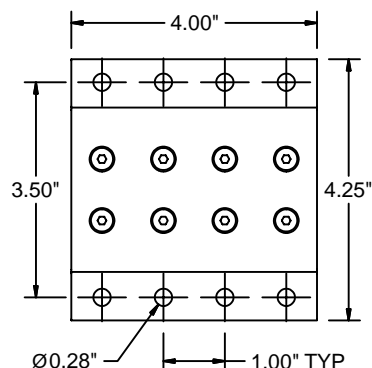
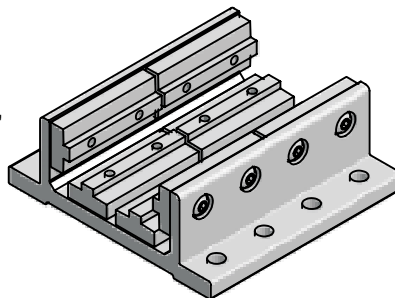
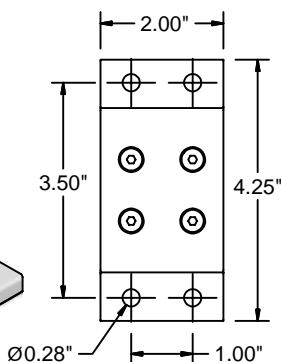
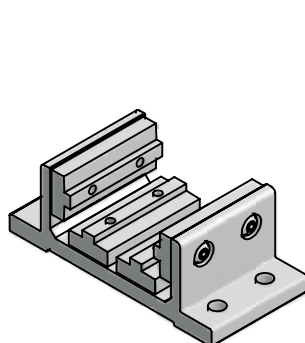
Ordering Information

Slide Block 1 - 2" Long
Slide Block 1 - 4" Long
Slide Block 2 - 2" Long
Slide Block 2 - 4" Long

Unit	Weight	Part #
Each	0.30 lb	30-1002
Each	0.56 lb	30-1004
Each	0.51 lb	30-2002
Each	0.93 lb	30-2004

*You can create custom length slide blocks by ordering the desired length profile (page 110) and individual slide pads (page 111).

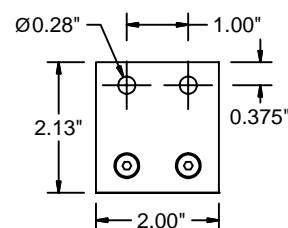
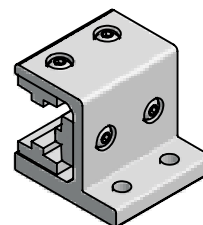
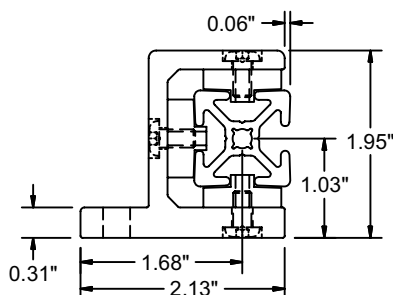
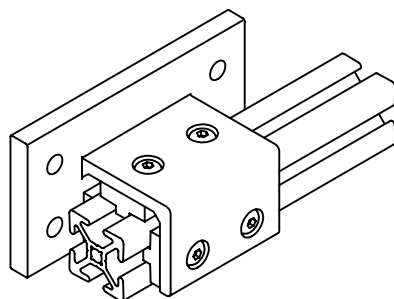
30-1004



30-2002

30-2004

Side Flange



30-1012

Application

Cost effective construction for bearing blocks and moveable rails. They utilize glide pads oriented within t-slots.

Technical Data

Aluminum, Clear Anodized
 UHMW Glide Pads

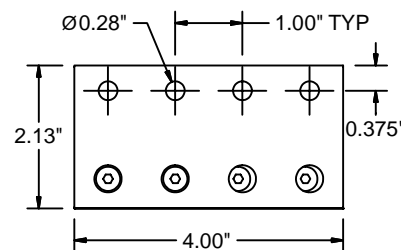
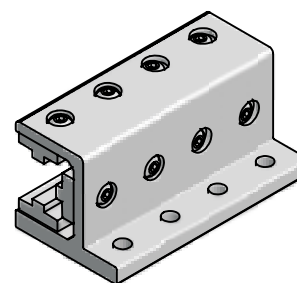
Recommended Fasteners (Order Separately)

Screws Use any 1/4 BHCS or SHCS

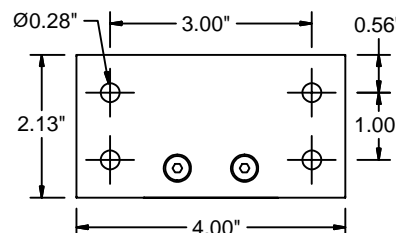
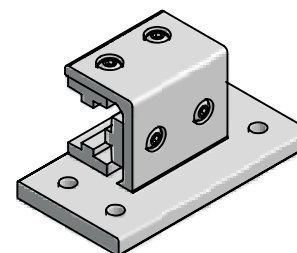
Ordering Information

	Unit	Weight	Part #
Slide Block Side Flange A 1 - 2" Long	Each	0.30 lb	30-1012
Slide Block Side Flange A 1 - 4" Long	Each	0.56 lb	30-1014
Slide Block Side Flange B 1 - 4" Long	Each	0.58 lb	30-1024

*You can create custom length slide blocks by ordering the desired length profile (page 110) and individual slide pads (page 111).



30-1014

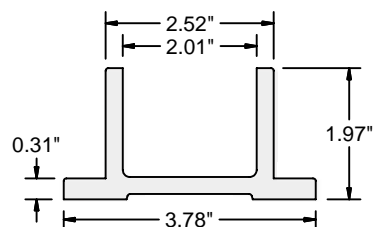


30-1024

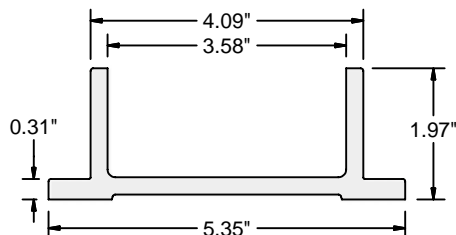
Slide
 Blocks

Slide Block Profiles

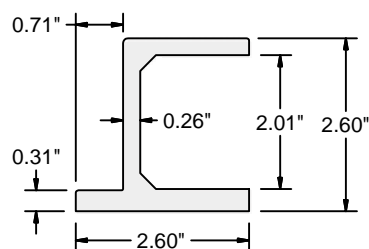
1.5" Series



13-410

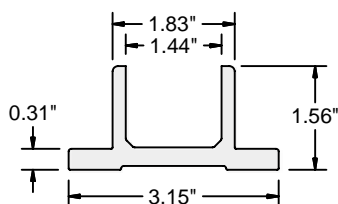


13-810

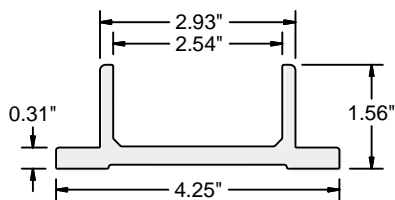


13-430

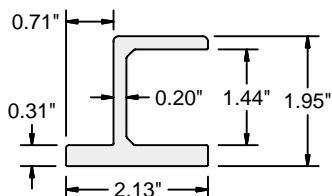
1" Series



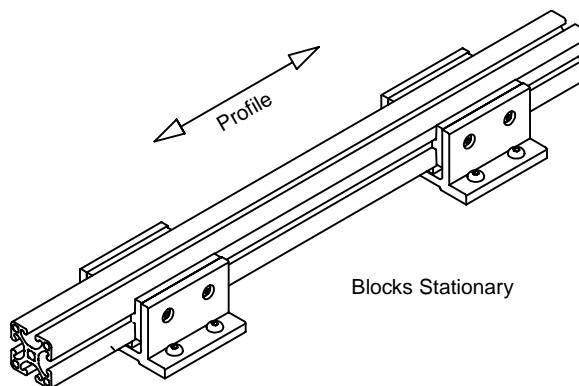
13-440



13-800



13-450



Application



Profiles for making custom slide blocks using slide pads.

* For standard slide blocks see pages 104 and 108; for side flange (SF) slide blocks see pages 105 and 109.

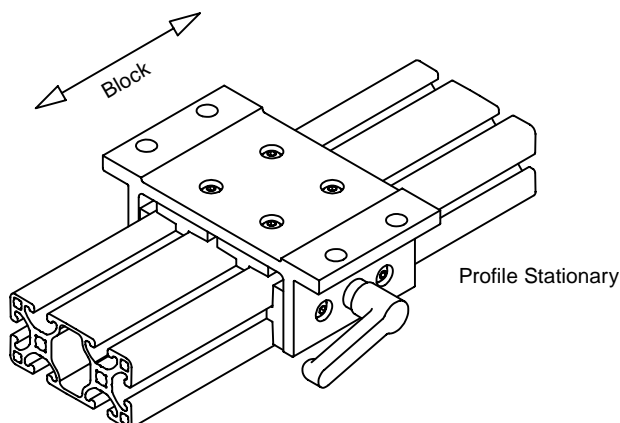
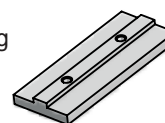
Technical Data

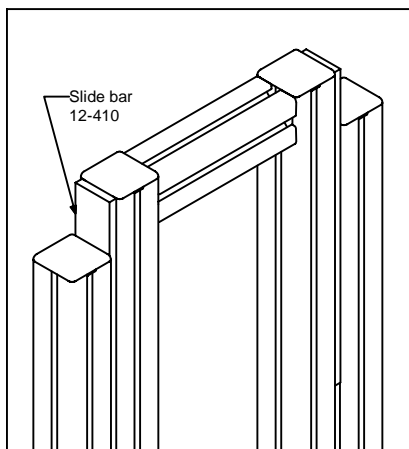
Aluminium, Clear Anodized

Ordering Information

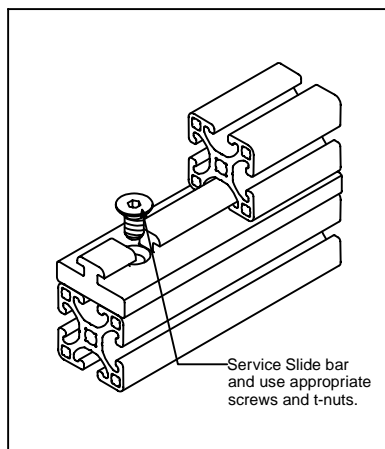
	Unit	Weight	Part #
Slide Profile 40	Cut off max. 240" (20')	2.33 lb/ft	13-410
Slide Profile 80	Cut off max. 240" (20')	2.82 lb/ft	13-810
Slide Profile 40 SF	Cut off max. 240" (20')	2.23 lb/ft	13-430
Slide Profile 28	Cut off max. 240" (20')	1.84 lb/ft	13-440
Slide Profile 56	Cut off max. 240" (20')	3.06 lb/ft	13-800
Slide Profile 28 SF	Cut off max. 240" (20')	1.80 lb/ft	13-450
* Saw cut necessary for cut to length			19-001

Custom slide blocks can be made using UHMW slide pads. Consult factory for part number information.





UHMW Slide strip on a parallel application.



UHMW Slide bar between two profiles

Application

Durable, low-friction material, self-lubricating and easily machined. Provides a smooth gliding surface on a wide range of applications, from linear systems to adjustable work surfaces.

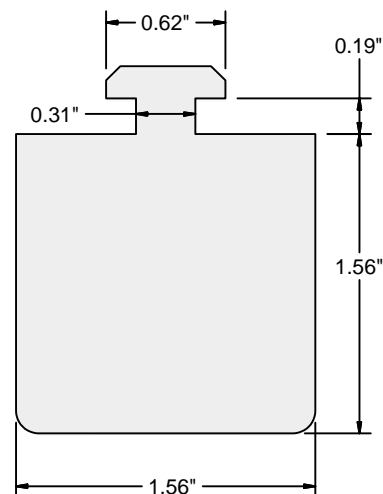
Technical Data

UHMW, White

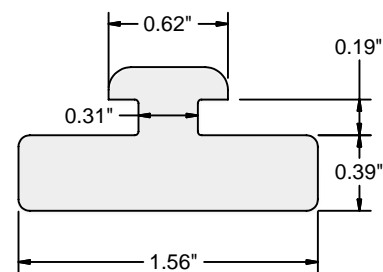
Ordering Information	Unit	Weight	Part #
UHMW Slide Bar 40 x 40	Cut off max. 120" (10')	1.04 lb/ft	12-400
UHMW Slide Bar 40 x 10	Cut off max. 120" (10')	0.31 lb/ft	12-420
UHMW Slide Strip 1.5"	Cut off max. 120" (10')	0.13 lb/ft	12-410
UHMW Slide Strip 1"	Cut off max. 120" (10')	0.06 lb/ft	12-402
* Saw cut necessary for cut to length			19-001

UHMW Slide Bar

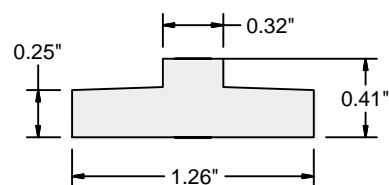
1.5" Series



12-400

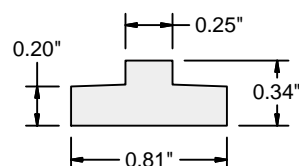


12-420



12-410

1" Series



12-402

Slide
Blocks