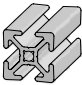
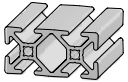
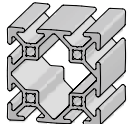


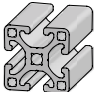
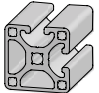

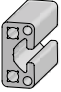
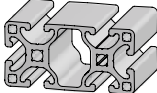
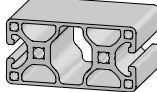
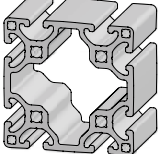
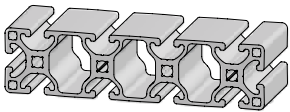
# Section 1

## Basic & Specialty Profiles

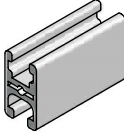
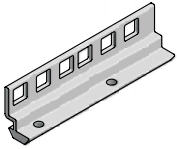
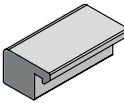
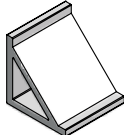
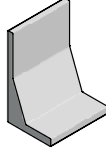
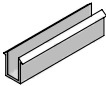
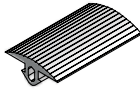
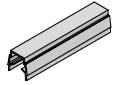
### 1" Series Basic Profiles

1" x 1"	16	
1" x 2"	16	
1" x 3"	17	
2" x 2"	17	

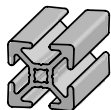
### 1.5" Series Basic Profiles

1.5" x 1.5" Standard	18	
1.5" x 1.5" Heavy	18	
1.5" x 1.5" Closed Face	19	
1.5" x 1.5" Quarter Round	20	
1.5" x 1.5" x 45°	20	
1.5" x 0.75"	20	
1.5" x 3" Standard	21	
1.5" x 3" Heavy	21	
1.5" x 3" Closed Face	22	
3" x 3" Standard	23	
3" x 3" Heavy	23	
1.5" x 6"	24	

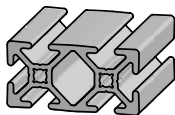
### Specialty Profiles

32x18 Door Profile	25	
Rack Angle Profile	26	
Blank Rack Angle Profile	26	
Clip Nuts	26	
Clamp Bar Profile	27	
Gusset Profile	27	
L-Bracket Profile	27	
Panel & Mesh Gaskets	28	
Profile Covers		
Safety Cover	28	
Anti-Skid Cover	28	
T-Slot Covers/Panel Holders	29	

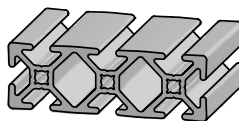
## Basic Profiles



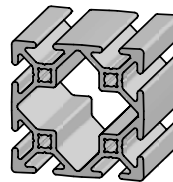
12-1010



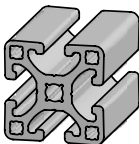
12-1020



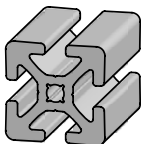
12-1030



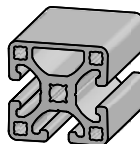
12-2020



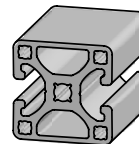
10-1515



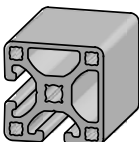
11-1515



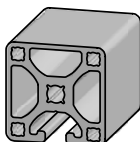
10-1593



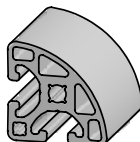
10-1594



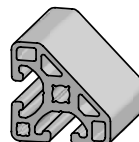
10-1592



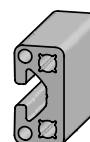
10-1591



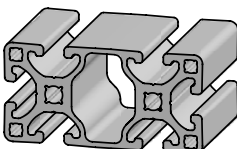
10-1543



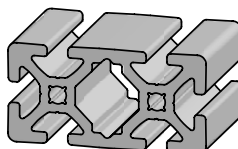
10-1545



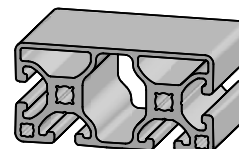
10-1575



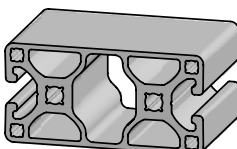
10-1530



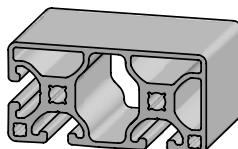
11-1530



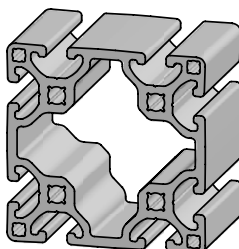
10-3093



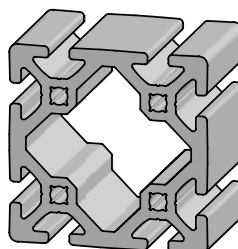
10-3094



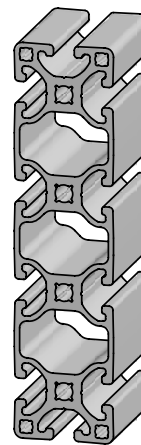
10-3092



10-3030



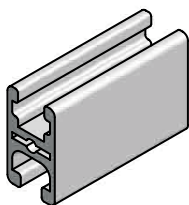
11-3030



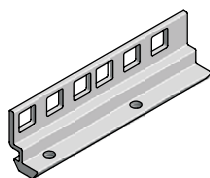
10-1560

## Specialty Profiles

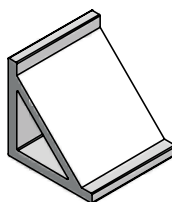
Profiles	Basic
	Specialty



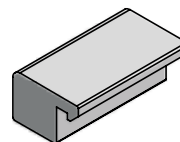
12-032



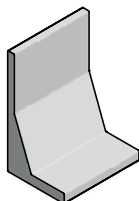
12-109



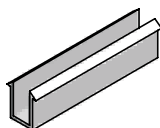
12-102z4



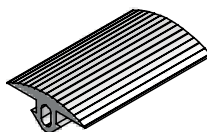
12-105



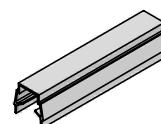
12-057z4



12-106

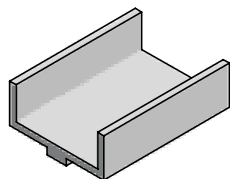


12-114

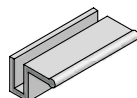


12-101

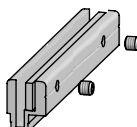
## Also Available in Panel Section



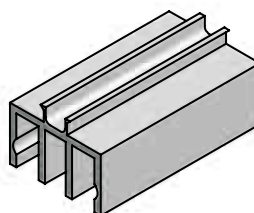
12-018



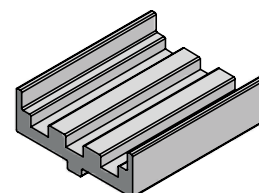
12-011



12-009

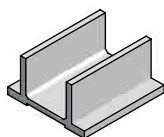


Sliding Door Guides

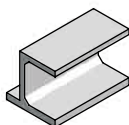


Roller Door Guides

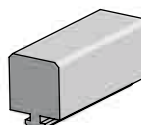
## Also Available in Slide Blocks Section



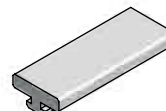
Slide Profiles



Side Flange Profiles

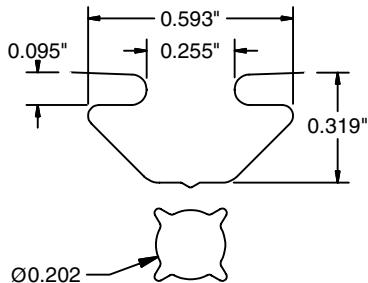


Slide Bar Profiles

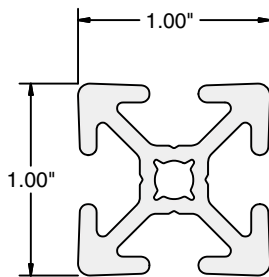


Slide Strips

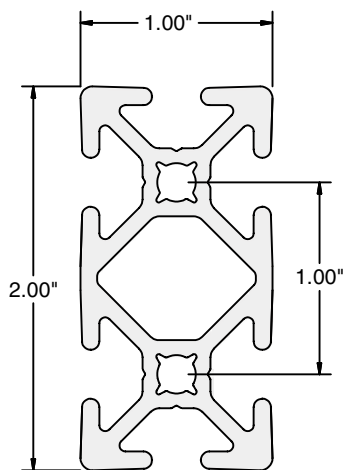
# 1" Series



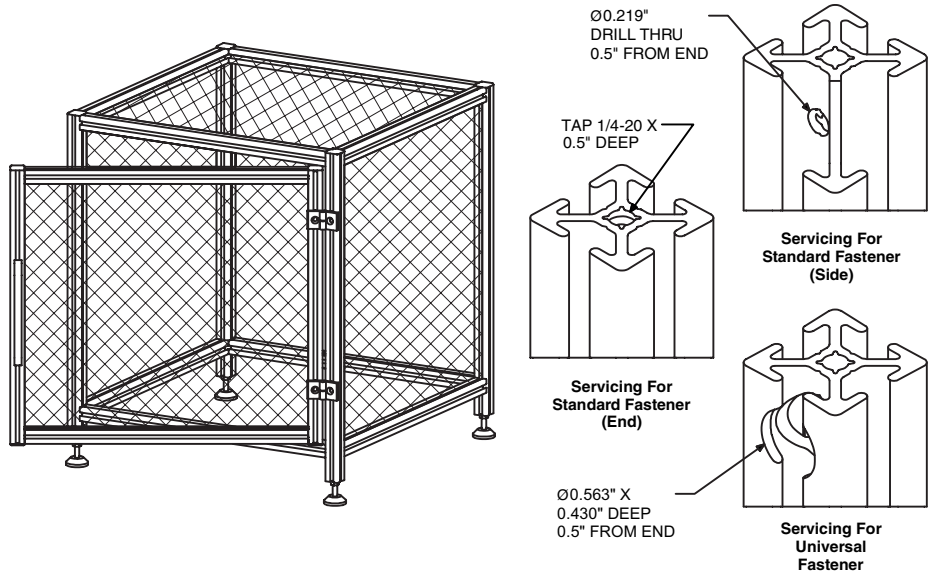
## 1" T-SLOT DETAIL



**12-1010**



**12-1020**



## Application

1" Series Profiles are designed for safety guards, enclosures, shelves, and other light to medium duty applications. T-Slots on four sides allows for effortless mounting of accessories directly onto the structure without additional machining. The T-slot is smaller than the 1.5" Series requiring different hardware. With 12-1020 higher rigidity can be attained by orienting the extrusion on its 'y' axis for heavier applications.

## Technical Data

Aluminum, Clear Anodized (See Technical Data page for full material and finish Specification)

Part #	Ix [in <sup>4</sup> ]	Iy [in <sup>4</sup> ]	Section [in <sup>2</sup> ]	Weight [lb/ft]
12-1010	0.046	0.046	0.439	0.516
12-1020	0.085	0.310	0.785	0.923

## Ordering Information

1" X 1" Profile  
 1" X 1" UPS Package  
 1" X 2" Profile  
 1" X 2" UPS Package

## Unit

Cut off max. 240 in  
 6 Pieces @ 96 in  
 Cut off max. 240 in  
 4 Pieces @ 96 in

## Part #

12-1010  
 12-1010PKG  
 12-1020  
 12-1020PKG  
 19-001

\* Saw Cut Needed for Cut to length  
 No saw cut needed for UPS packages.

Full length packages are available. Please consult your local sales representative for details and pricing.

## Quick Reference for Mating Components

### Fasteners

1" Standard Fastener  
 1" Universal Fastener

25-022  
 25-023

### End Caps

1" X 1" (for 12-1010)  
 1" X 2" (for 12-1020)

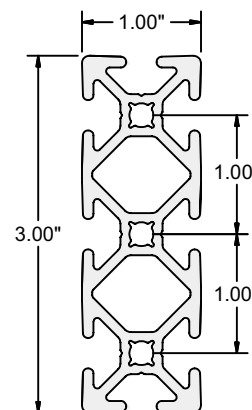
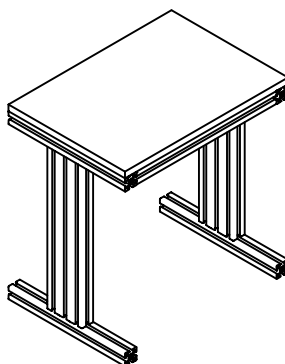
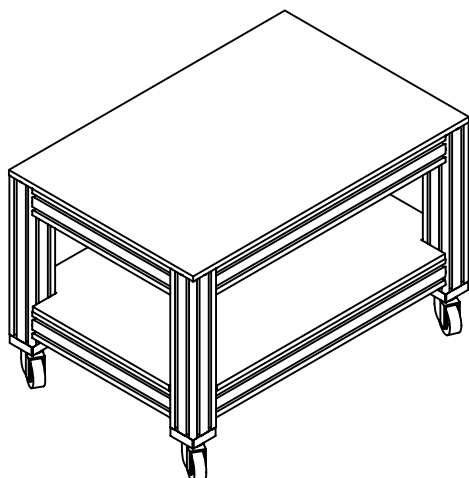
18-1010  
 18-1020

### Structural Accessories

Levelers pg 89  
 Casters pg 96  
 Plates pg 50  
 Gussets pg 44

**1" Series**

Profiles  
 Basic  
 Specialty



**12-1030**

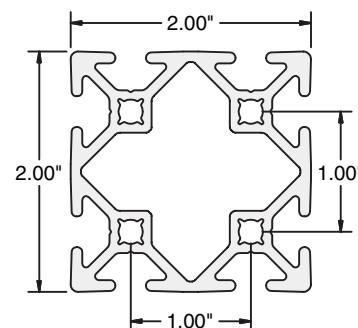
**Application**

These profiles are ideal for support and post applications. With their higher rigidity, structures can be built with higher stability. 12-1030 is designed with a high inertial strength in the 'y' axis. This allows higher structural integrity with a smaller profile to create more stable and rigid structures. T-Slots on four sides allows for effortless mounting of accessories directly onto the structure without additional machining.

**Technical Data**

Aluminum, Clear Anodized (See Technical Data page for full material and finish specification)

Part #	Ix [in <sup>4</sup> ]	Iy [in <sup>4</sup> ]	Section [in <sup>2</sup> ]	Weight [lb/ft]
12-1030	0.124	0.967	1.131	1.330
12-2020	0.555	0.555	1.218	1.432



**12-2020**

**Ordering Information**

1" X 3" Profile

**Unit**  
 Cut off max. 240 in

**Part #**  
 12-1030

2" X 2" Profile

Cut off max. 240 in

12-2020

\* Saw Cut Needed for Cut to length

19-001

Full length packages are available. Please consult your local sales representative for details and pricing.

**Quick Reference for Mating Components**

**Fasteners**

1" Standard Fastener

25-022

1" Universal Fastener

25-023

**Structural Accessories**

Levelers

pg 89

Castors

pg 96

Plates

pg 50

Gussets

pg 44

**End Caps**

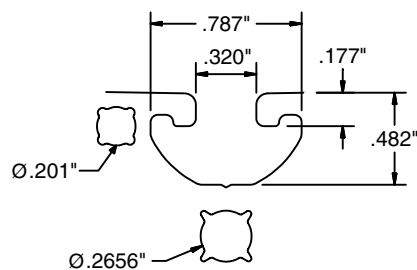
1" X 3" (for 12-1030)

18-1030

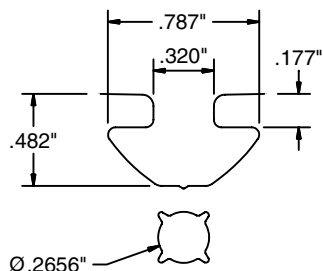
2" X 2" (for 12-2020)

18-2020

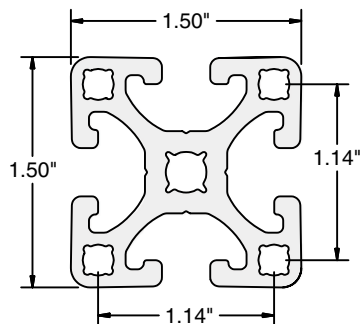
## 1.5" Series



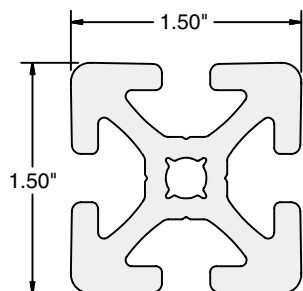
**1.5" STANDARD  
T-SLOT DETAIL**



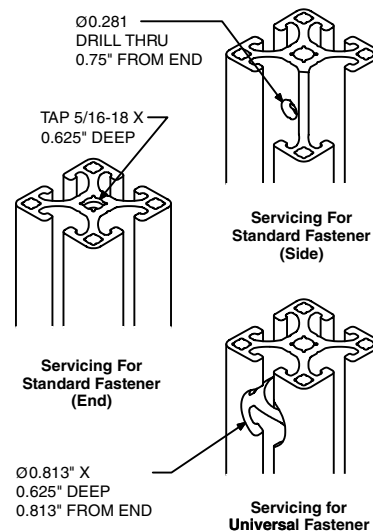
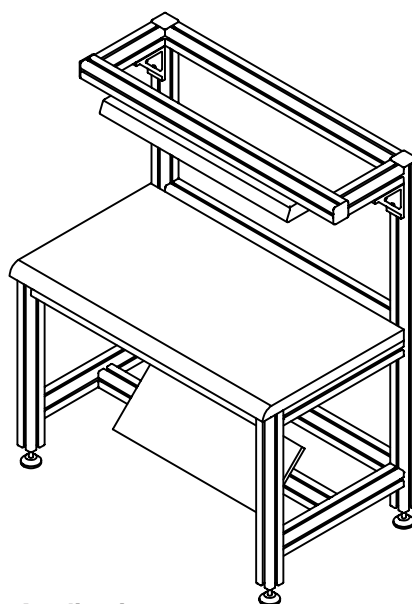
**1.5" HEAVY  
T-SLOT DETAIL**



**10-1515**



**11-1515**



### Application

10-1515 and 11-1515 are ideal general purpose extrusions for guards, enclosures, work stations, tool carts and smaller machine frames. T-slots on four sides allows for effortless mounting of accessories directly onto the structure without additional machining.

### Technical Data

Aluminum, Clear Anodized (See Technical Data page for full material and finish specification)

Part #	Ix [in <sup>4</sup> ]	Iy [in <sup>4</sup> ]	Section [in <sup>2</sup> ]	Weight [lb/ft]
10-1515	0.207	0.207	0.969	1.140
11-1515	0.271	0.271	1.201	1.412

### Ordering Information

1.5" x 1.5" Standard Profile  
1.5" x 1.5" Standard UPS Package

1.5" x 1.5" Heavy Profile  
1.5" x 1.5" Heavy UPS Package

\* Saw cut needed for Cut to Length  
No saw cut needed for UPS packages

### Unit

Cut off max. 240 in  
4 Pieces @ 96 in

Cut off max. 240 in  
4 Pieces @ 96 in

### Part #

10-1515  
10-1515PKG

11-1515  
11-1515PKG

19-001

Full length packages are available. Please consult your local sales representative for details and pricing.

### Quick Reference for Mating Components

#### Fasteners

1.5" Standard Fastener	25-003
1.5" Single Fastener	25-014
1.5" Universal Fastener	25-004

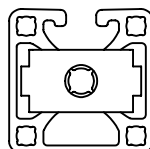
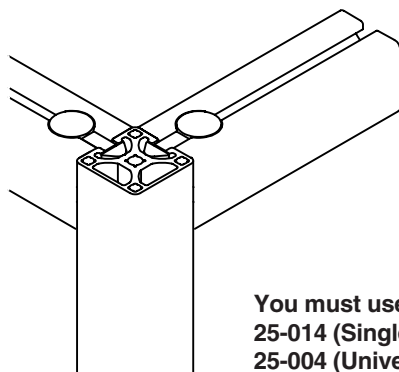
#### End Caps

1.5" x 1.5"	18-1515
-------------	---------

#### T-Nuts

1/4-20 Roll-In	25-001
5/16-18 Roll-In	25-002
5/16-18 Double Roll-In	25-041
1/4-20 Economy	20-083
5/16-18 Economy	20-082

# 1.5" Series



**You must use 25-022 (Light Standard Fastener), 25-014 (Single Ended Standard Fastener) or 25-004 (Universal Fastener) when attaching to the end of the closed slot profiles (as shown above).**

## Application

These profiles are designed with various closed faces. They are particularly useful when a smooth appearance is desired. The smooth surfaces are ideal for clean room, packaging, medical and pharmaceutical applications. The option of different T-slotted faces is ideal for fastening the profiles while retaining a smooth exterior to create the most aesthetic appearance.

## Technical Data

Aluminum, Clear Anodized (See Technical Data page for full material and finish specification)

Part #	Ix [in <sup>4</sup> ]	Iy [in <sup>4</sup> ]	Section [in <sup>2</sup> ]	Weight [lb/ft]
10-1591	0.205	0.205	0.961	1.130
10-1592	0.207	0.207	0.963	1.132
10-1593	0.205	0.205	0.966	1.136
10-1594	0.208	0.208	0.963	1.132

## Ordering Information

	Unit	Part #
1.5" x 1.5" Mono Slot Profile	Cut off max. 240 in	10-1591
1.5" x 1.5" Bi-Slot Corner Profile	Cut off max. 240 in	10-1592
1.5" x 1.5" Tri-Slot Profile	Cut off max. 240 in	10-1593
1.5" x 1.5" Bi-Slot Midframe Profile	Cut off max. 240 in	10-1594
* Saw cut needed for Cut to Length		19-001

**Full length packages are available. Please consult your local sales representative for details and pricing.**

## Quick Reference for Mating Components

### Fasteners

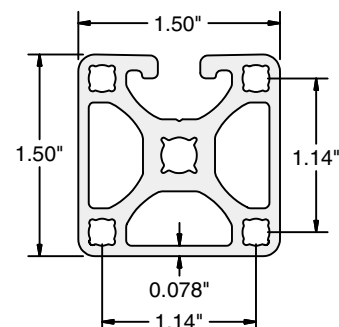
1.5" Light Standard Fastener	25-022
1.5" Single Fastener	25-014
1.5" Universal Fastener	25-004

### End Caps

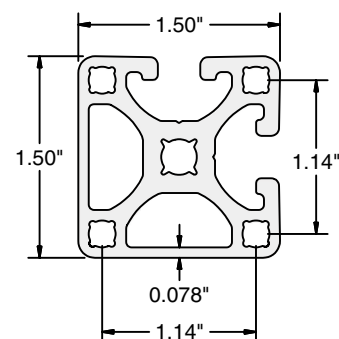
1.5" x 1.5"	18-1515
-------------	---------

### Structural Accessories

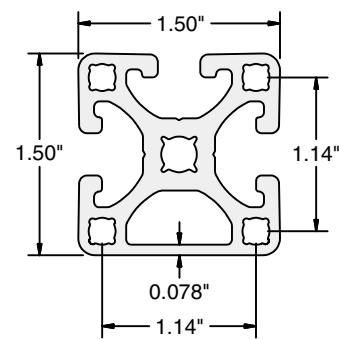
Levelers	pg 89
Casters	pg 96
Plates	pg 48
Gussets	pg 44



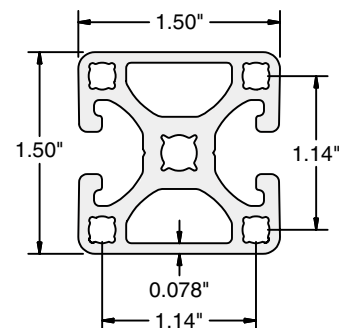
**10-1591**



**10-1592**



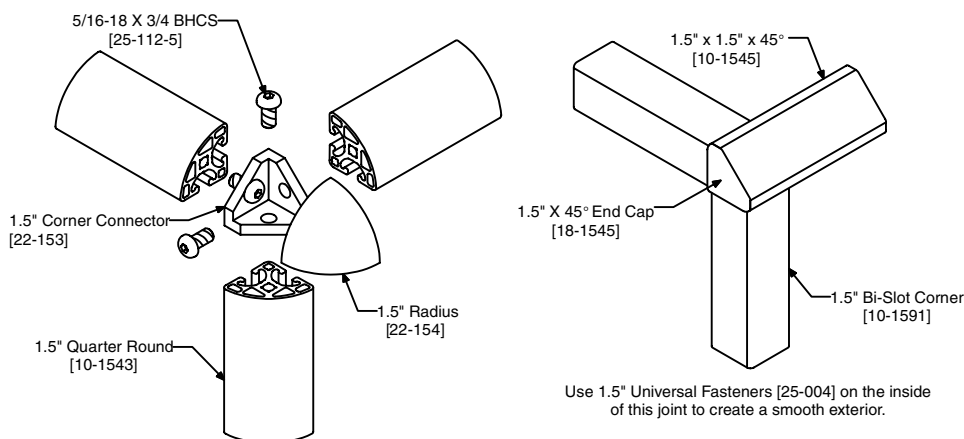
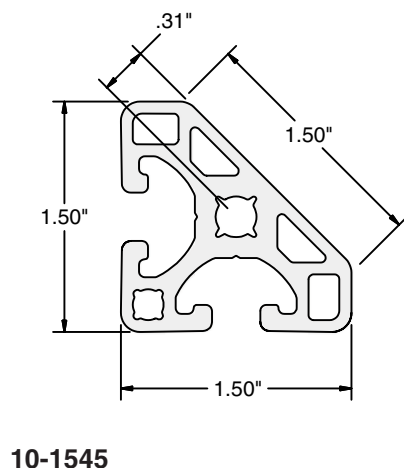
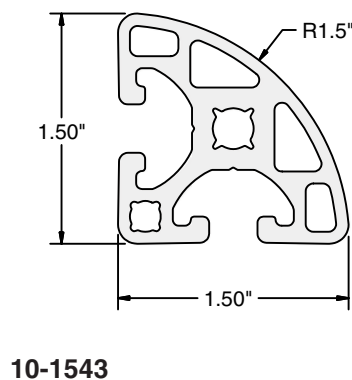
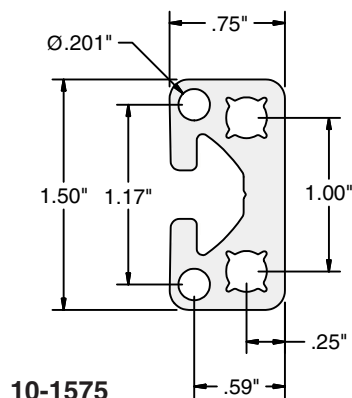
**10-1593**



**10-1594**



## 1.5" Series



### Application

These profiles are designed with curved, angular and smooth surfaces while retaining T-slotted surfaces for connecting. They are particularly useful for rounding or smoothing off corners of structures where ergonomics apply. The smooth surfaces are ideal for clean room, medical and pharmaceutical applications. 10-1545 can also be used for gusset applications or where 45° angles are required. 10-1575 is also ideal for creating handles and for mounting accessories.

### Technical Data

Aluminum, Clear Anodized (See Technical Data page for full material and finish Specification)

Part #	Ix [in <sup>4</sup> ]	Iy [in <sup>4</sup> ]	Section [in <sup>2</sup> ]	Weight [lb/ft]
10-1575	0.037	0.142	0.678	0.797
10-1543	0.122	0.122	0.839	0.987
10-1545	0.099	0.189	0.814	0.957

### Ordering Information

1.5" X 0.75" Profile

1.5" Quarter Round Profile

1.5" X 1.5" x 45° Profile

\* Saw Cut Needed for Cut to length

### Unit

Cut off max. 240 in

Cut off max. 240 in

Cut off max. 240 in

### Part #

10-1575

10-1543

10-1545

19-001

Full length packages are available. Please consult your local sales representative for details and pricing.

### Quick Reference for Mating Components

#### Fasteners

1.5" Standard Fastener	25-003
1.5" Single End Standard	25-014
1.5" Universal Fastener	25-004

#### Corner Connector

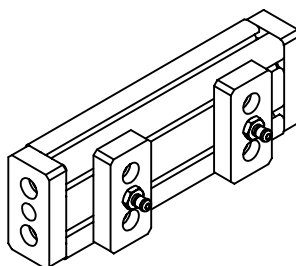
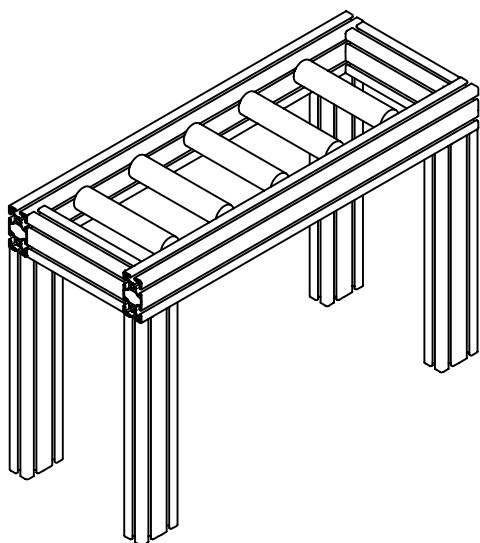
1.5" Corner Connector	22-153
-----------------------	--------

#### End Caps

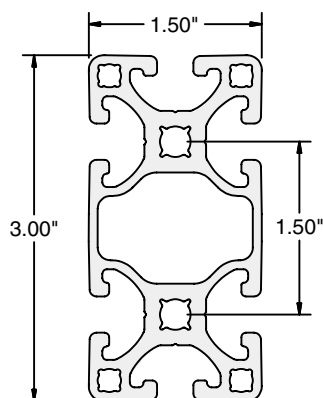
1.5" x 0.75" (for 10-1575)	18-1575
1.5" Quarter (for 10-1543)	18-1543
1.5" x 45° (for 10-1545)	18-1545
1.5" Radius (for Corner Connector)	22-154



# 1.5" Series



Center chamber can be used to transport compressed air.



**10-1530**

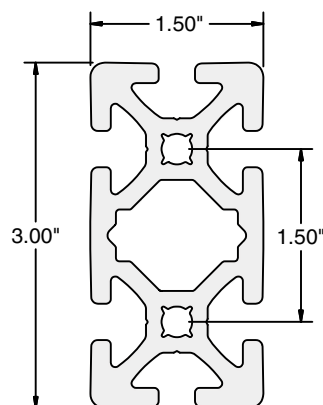
## Application

10-1530 and 11-1530 are ideal general purpose extrusions for guards, enclosures, work stations, tool carts and machine frames. They are designed with a high inertial strength in the 'y' axis. This allows higher structural integrity to create more stable and rigid structures. T-slots on four sides allow for effortless mounting of accessories directly onto the structure without additional machining. These profiles are ideal for transporting compressed air.

## Technical Data

Aluminum, Clear Anodized (See Technical Data page for full material and finish Specification)

Part #	Ix [in <sup>4</sup> ]	Iy [in <sup>4</sup> ]	Section [in <sup>2</sup> ]	Weight [lb/ft]
10-1530	0.367	1.493	1.606	1.889
11-1530	0.505	1.889	2.128	2.503



**11-1530**

## Ordering Information

1.5" X 3" Standard Profile  
 1.5" X 3" Standard UPS Package  
 1.5" X 3" Heavy Profile  
 1.5" X 3" Heavy UPS Package

## Unit

Cut off max. 240 in  
 4 Pieces @ 96 in  
 Cut off max. 240 in  
 4 Pieces @ 96 in

## Part #

10-1530  
 10-1530PKG  
 11-1530  
 11-1530PKG  
 19-001

\* Saw Cut Needed for Cut to length  
 No saw cut needed for UPS packages.

Full length packages are available. Please consult your local sales representative for details and pricing.

## Quick Reference for Mating Components

### Fasteners

1.5" Standard Fastener 25-003  
 1.5" Universal Fastener 25-004

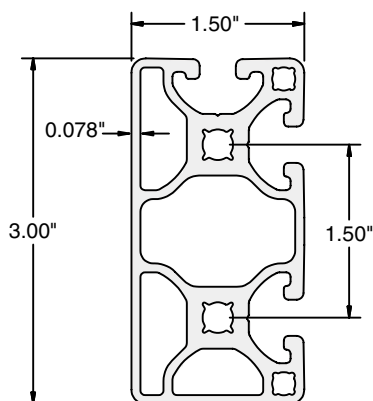
### End Caps

1.5" X 3" 18-1530

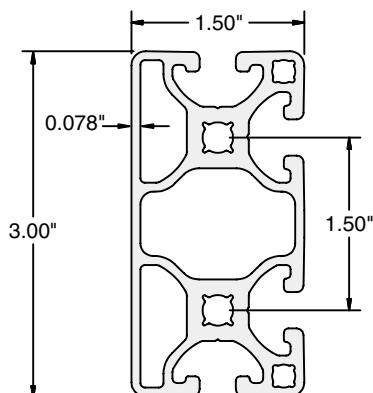
### T-Nuts

1/4-20 Roll-In 25-001  
 5/16-18 Roll-In 25-002  
 5/16-18 Double Roll-In 25-041  
 1/4-20 Economy 20-083  
 5/16-18 Economy 20-082

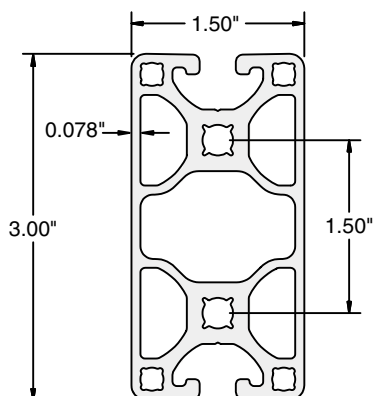
## 1.5" Series



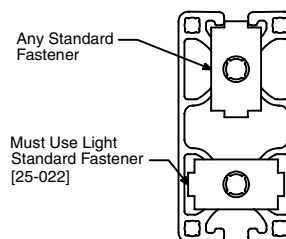
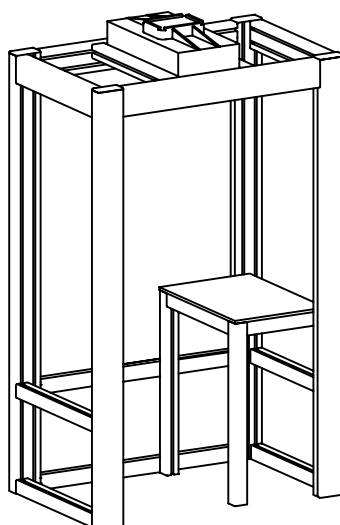
**10-3092**



**10-3093**



**10-3094**



Depending on the orientation of the standard fastener you will need to use the appropriate standard fastener.

### Application

These profiles are designed with the high strength of 1.5" by 3" profiles with the addition of closed surfaces to create a smooth aesthetic appearance. They are ideal for applications such as work stations, machine frames and rigid enclosures. The smooth surfaces make them ideal for clean room, packaging, medical and pharmaceutical applications. These profiles can also be used for transporting compressed air.

### Technical Data

Aluminum, Clear Anodized (See Technical Data page for full material and finish Specification)

Part #	Ix [in <sup>4</sup> ]	Iy [in <sup>4</sup> ]	Section [in <sup>2</sup> ]	Weight [lb/ft]
10-3092	0.361	1.456	1.563	1.838
10-3093	0.353	1.394	1.531	1.800
10-3094	0.375	1.478	1.594	1.875

### Ordering Information

	Unit	Part #
1.5" X 3" Tri-Slot Profile	Cut off max. 240 in	10-3092
1.5" X 3" Quad Slot Profile	Cut off max. 240 in	10-3093
1.5" X 3" Bi-Slot Midframe Profile	Cut off max. 240 in	10-3094
* Saw Cut Needed for Cut to length		19-001

Full length packages are available. Please consult your local sales representative for details and pricing.

### Quick Reference for Mating Components

#### Fasteners

1.5" Standard Fastener	25-003
1.5" Single End Fastener	25-014
1.5" Universal Fastener	25-004

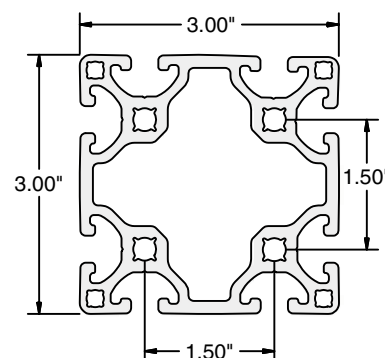
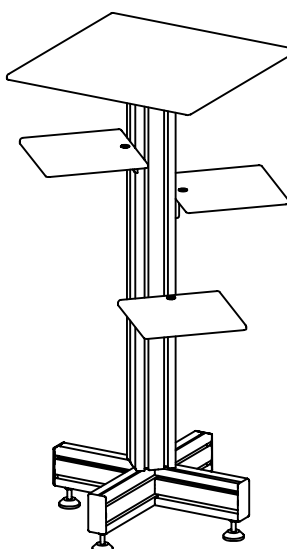
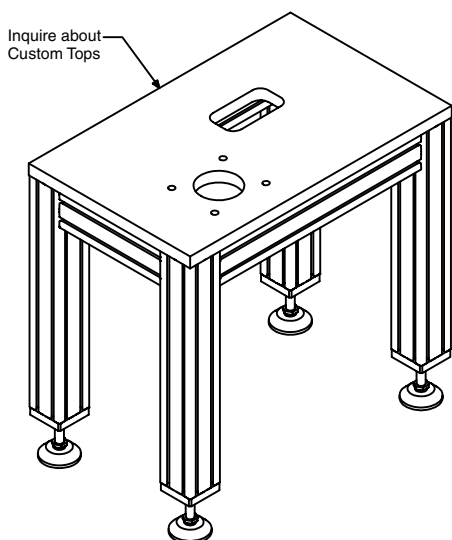
#### End Caps

1.5" X 3"	18-1530
-----------	---------

#### T-Nuts

1/4-20 Roll-In	25-001
5/16-18 Roll-In	25-002
5/16-18 Double Roll-In	25-041
1/4-20 Economy	20-083
5/16-18 Economy	20-082

# 1.5" Series



**10-3030**

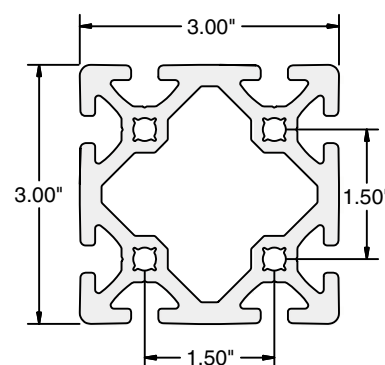
## Application

These profiles are designed for medium to heavy duty structures and are ideal for structural support and post applications. These profiles have high structural integrity to create extra stable and rigid structures. T-slots on four sides allow for effortless mounting of accessories directly onto the structure without additional machining. These profiles are ideal for transporting compressed air.

## Technical Data

Aluminum, Clear Anodized (See Technical Data page for full material and finish specification)

Part #	Ix [in <sup>4</sup> ]	Iy [in <sup>4</sup> ]	Section [in <sup>2</sup> ]	Weight [lb/ft]
10-3030	2.732	2.732	2.697	3.172
11-3030	3.500	3.500	3.449	4.056



**11-3030**

## Ordering Information

3" X 3" Standard Profile

3" X 3" Standard UPS Package

3" X 3" Heavy Profile

\* Saw Cut Needed for Cut to length

No saw cut needed for UPS packages.

## Unit

Cut off max. 240 in

2 Pieces @ 96 in

Cut off max. 240 in

## Part #

10-3030

10-3030PKG

11-3030

19-001

**Full length packages are available. Please consult your local sales representative for details and pricing.**

## Quick Reference for Mating Components

### Fasteners

1.5" Standard Fastener 25-003

1.5" Universal Fastener 25-004

### End Caps

3" X 3" 18-3030

### Structural Accessories

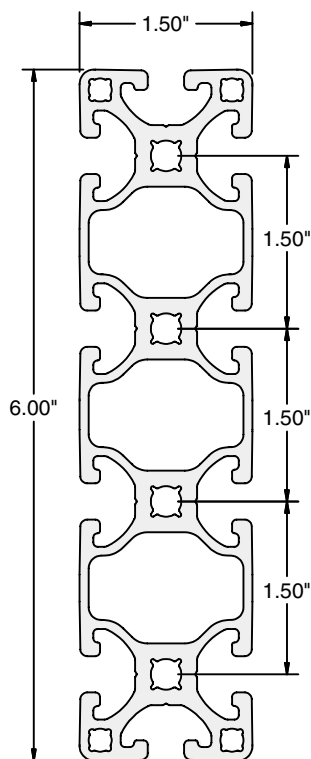
Levelers pg 89

Casters pg 96

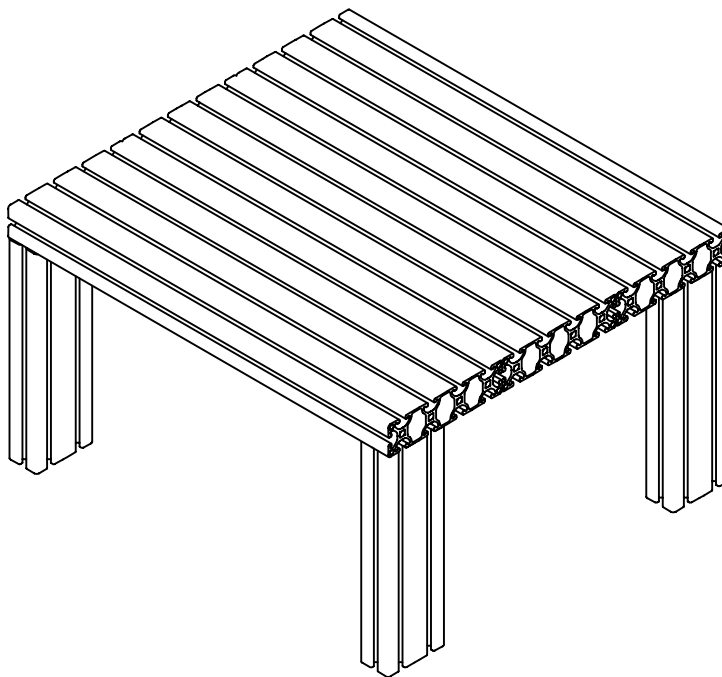
Plates pg 48

Gussets pg 44

## 1.5" Series



**10-1560**



### Application

10-1560 is designed for heavy duty structures and is an ideal profile for structural support and post applications. 10-1560 is designed with a high inertial strength in the 'y' axis. This allows for very high structural integrity to create extra stable and rigid structures. T-slots on four sides allow for effortless mounting of accessories directly onto the structure without additional machining. This profile is ideal for transporting compressed air. Because of its multiple T-slots, it is also an ideal profile for a fixture table.

### Technical Data

Aluminum, Clear Anodized (See Technical Data page for full material and finish specification.)

Part #	Ix [in <sup>4</sup> ]	Iy [in <sup>4</sup> ]	Section [in <sup>2</sup> ]	Weight [lb/ft]
10-1560	0.685	10.206	2.880	3.387

### Ordering Information

1.5" X 6" Profile

\* Saw Cut Needed for Cut to length

### Unit

Cut off max. 240 in

### Part #

10-1560

19-001

**Full length packages are available. Please consult your local sales representative for details and pricing.**

### Quick Reference for Mating Components

#### Fasteners

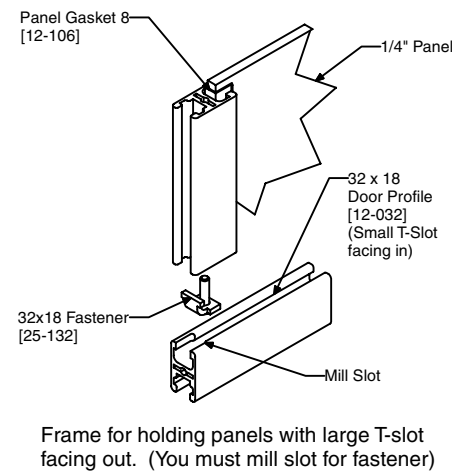
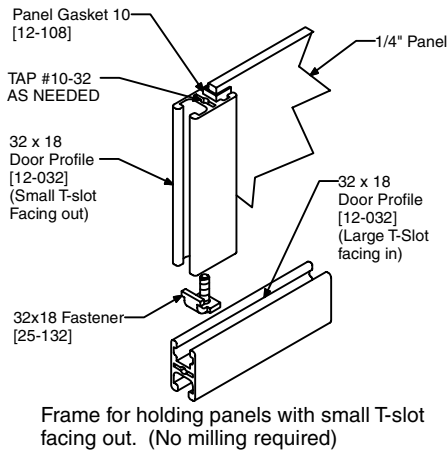
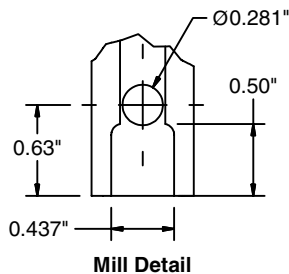
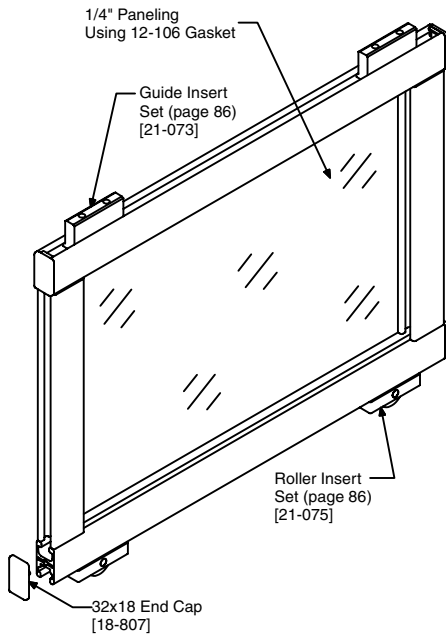
1.5" Standard Fastener	25-003
1.5" Universal Fastener	25-004

#### End Caps

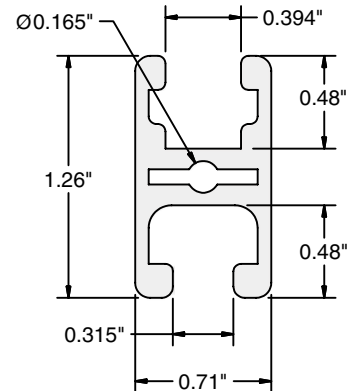
1.5" X 3"	18-1530
(Use 2 per end)	

#### T-Nuts

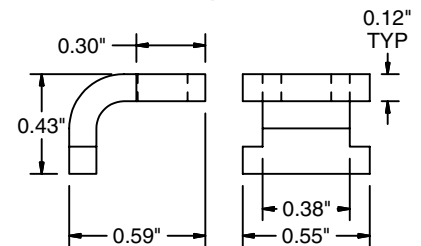
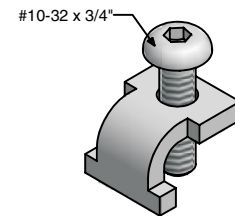
1/4-20 Roll-In	25-001
5/16-18 Roll-in	25-002
5/16-18 Double Roll-In	25-041
1/4-20 Economy	20-083
5/16-18 Economy	20-082



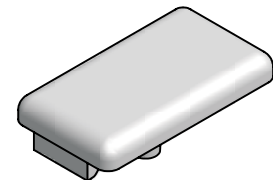
## Door Profile



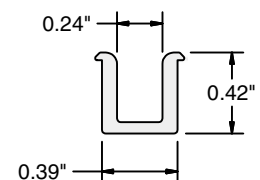
**12-032**



**25-132**



**18-807**



**12-108**

### Application

Light duty smooth face extrusion that is suitable for guarding, sliding doors and enclosures.

This profile requires the special fasteners and end caps that are shown on this page.

Standard 1.5" T-nuts work in the small T-slot.

### Technical Data

Aluminum, Clear Anodized  
Weight 0.45 lb/ft

Fastening Set: St., Galvanized  
Weight 0.02 lb

End Cap: Glass Filled Nylon, Black  
Weight 0.007 lb

Gasket: Molded vinyl, grey

### Ordering Information

32 x 18 Door Profile

\* Saw Cut Needed for Cut to length

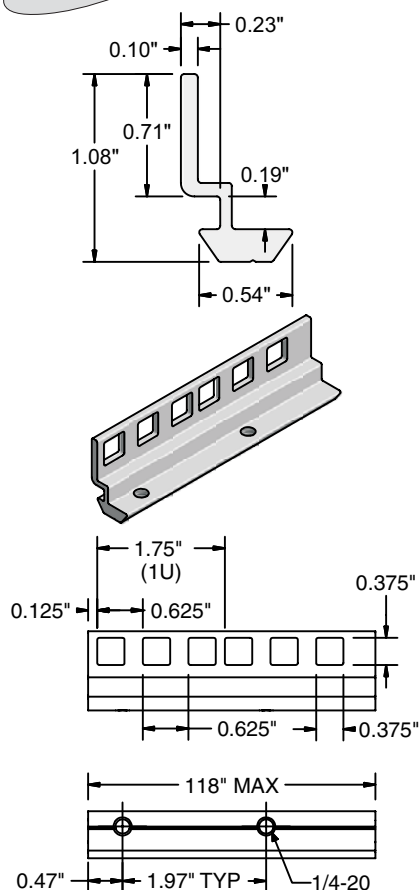
Fastening Set 32 x 18

32 x 18 End Cap

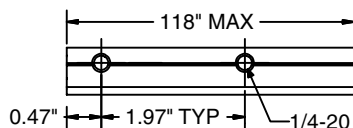
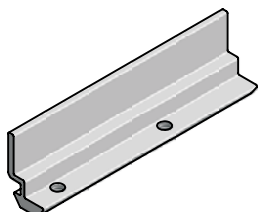
Panel Gasket 10

Unit	Part #
Cut off max. 236 in	12-032
	19-001
Each	25-132
Each	18-807
Each	12-108

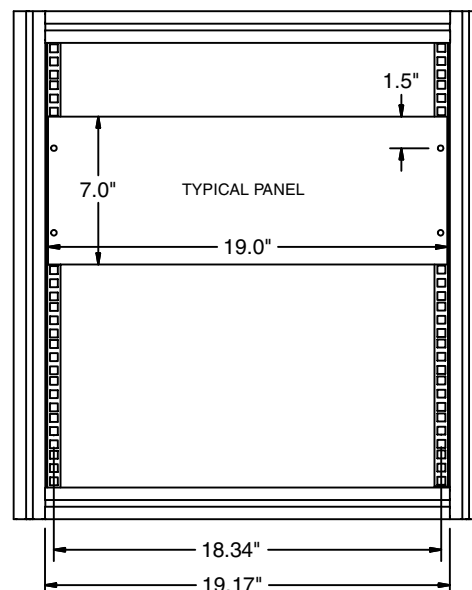
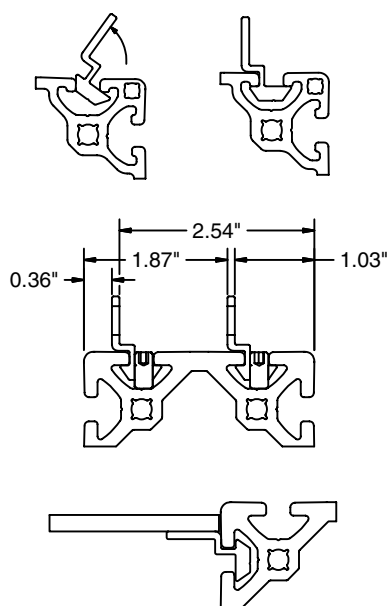
## Rack Angle



12-109



12-110



### Application

Used for attaching standard 19" rack mount equipment/panels to 1.5" Profiles. Clip nuts snap into square holes in 12-109 rack angle. Blank rack angle 12-110 can be machined to mount any accessories.

Blank rack angle can also be used to support horizontal panels, especially as drop in panels (like ceiling panels).

### Technical Data

Rack Angle  
Aluminum, Clear Anodized  
Complete with 1/4-20 flat point set screw.

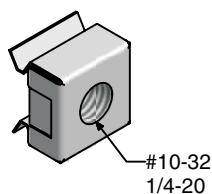
Weight:	
12-109	0.679 lb/ft
12-110	0.683 lb/ft

### Ordering Information

19" Rack Angle  
Rack Angle, Blank  
\* Saw Cut necessary for cut to length

Unit	Part #
Cut off max. 118"	12-109
Cut off max. 118"	12-110
	19-001

## Clip Nuts



25-075  
25-076

### Application

Square nut with clip attachment for 19" Rack Angle. Nut snaps into square holes for attaching panels and accessories.

### Technical Data

St., Zinc Plated  
Weight 5g

### Ordering Information

Clip Nut #10-32  
Clip Nut 1/4-20

Unit	Weight	Part #
Each	0.01 lb	25-075
Each	0.01 lb	25-076

### Application



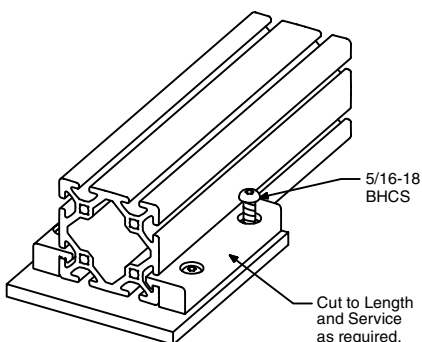
For attachment of 1.5" Series profiles to base plates and other parts. Must be used in pairs to accomplish proper clamping of the profile.

### Technical Data

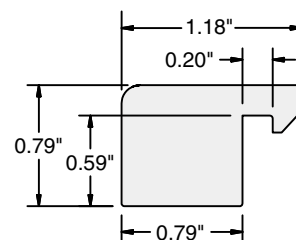
Aluminium, Clear Anodized

### Weight

0.83 lb/ft



## Clamp Bar Profile



**12-105**

### Ordering Information

Clamp Bar Profile Cut off max. 78" (6.5')

\* Saw cut necessary for cut to length

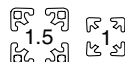
### Unit

### Part #

12-105

19-001

### Application



Can be cut and machined for custom gussets and support structures. Anodizing available on request.

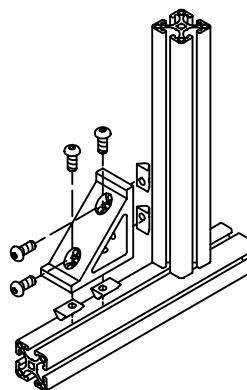
\* For standard gusset brackets see page 44.

### Technical Data

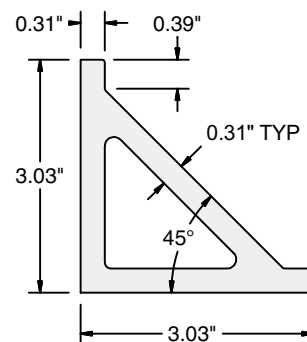
Aluminium, Mill Finish

### Weight

3.25 lb/ft



## Gusset Profile



**20-102z4**

### Ordering Information

Gusset Profile Cut off max. 120" (10')

\* Saw cut necessary for cut to length

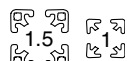
### Unit

### Part #

12-102z4

19-001

### Application



Can be cut and machined for custom floor mounting or other types of brackets. Anodizing available on request.

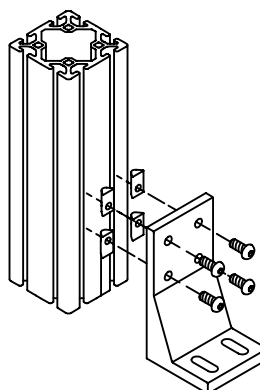
\* For standard floor mounting brackets see page 94.

### Technical Data

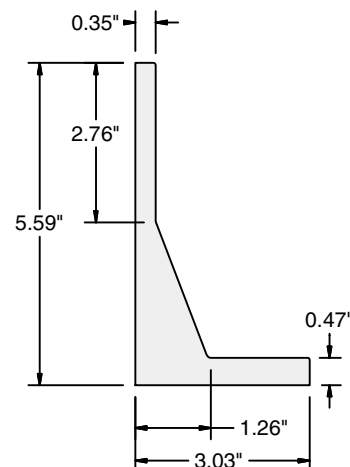
Aluminium, Mill Finish

### Weight

5.05 lb/ft



## L-Bracket Profile



**21-057z4**

### Ordering Information

L-Bracket Profile Cut off max. 120" (10')

\* Saw cut necessary for cut to length

### Unit

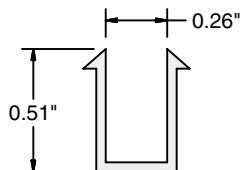
### Part #

12-057z4

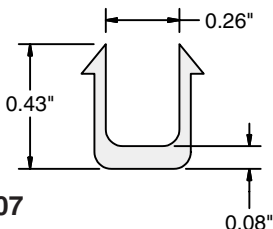
19-001



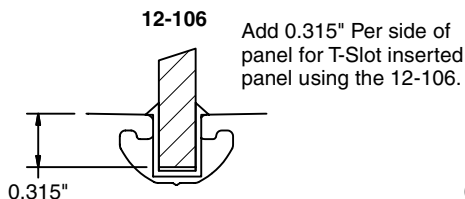
## Panel & Mesh Gaskets



12-106

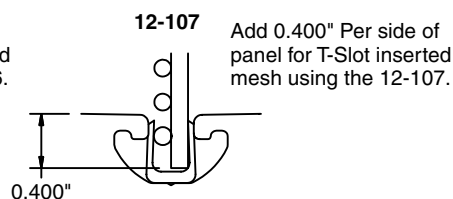


12-107



12-106

Add 0.315" Per side of panel for T-Slot inserted panel using the 12-106.



12-107

Add 0.400" Per side of panel for T-Slot inserted mesh using the 12-107.

### Application



Panel gasket is used to hold 1/4" panels in 1.5" profiles. The mesh gasket holds up to 12 Gage wire mesh in 1.5" profiles. Both gaskets provide a tight fit and prevent any rattling.

### Technical Data

Molded Vinyl, Grey

### Ordering Information

Panel Gasket

Unit  
Cut off max. 100'  
100' Roll

Weight

0.29 lb/ft

Part #

12-106  
12-106R

Mesh Gasket

Unit  
Cut off max. 100'  
100' Roll

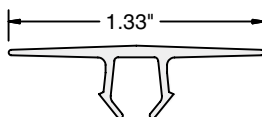
Weight

0.29 lb/ft

Part #

12-107  
12-107R

## Safety Cover



12-112

### Application



These bright covers snap into 1.5" profile and provide high visibility in guarding applications. This cover also prevents dirt and debris from collecting in the T-slot.

### Technical Data

Rigid PVC, Yellow

### Ordering Information

Safety Cover Strip

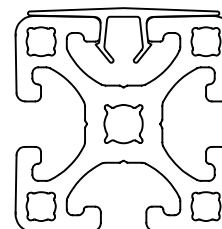
Unit  
Cut off max. 9.8'

Weight

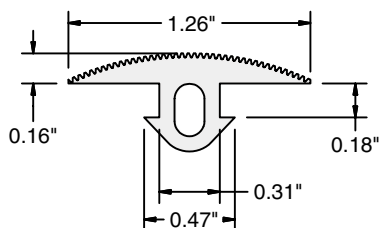
0.067 lb/ft

Part #

12-112



## Anti-Skid Cover



12-114

### Application



Cover for 1.5" profiles is used for non-slip surfaces such as ladders and stops for sliding doors. Oil and water resistant.

### Technical Data

Rubber, Black

Hardness 80 Shore

### Ordering Information

Anti-Skid Cover

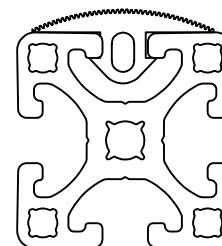
Unit  
Cut off max. 65'

Weight

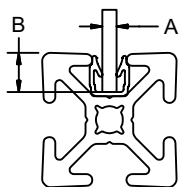
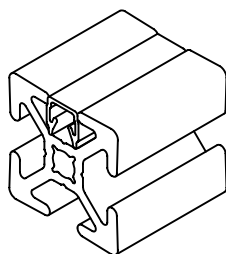
0.11 lb/ft

Part #

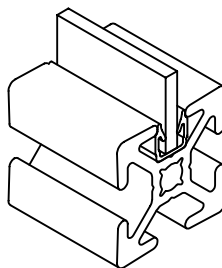
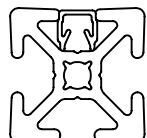
12-114



## Cover Strip/ Panel Holders



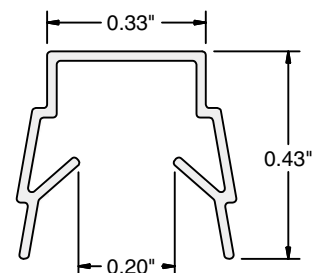
	A	B
1" Series	1/8"	1/4"
1.5" Series	3/16" - 1/4"	5/16"



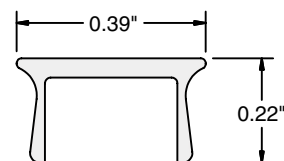
- T-slot covering can be cut easily with tin snips.
- Wires and cables can be concealed in T-slot with use of T-slot cover.

- 12-101 & 12-090 Can be inserted upside down and used as a gasket for T-slot inserted panels.

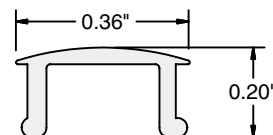
### 1.5" Series



**12-101**

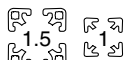


**12-102**



**12-111B**

### Application



T-slot cover is primarily used to cover the T-slots in the extrusion to prevent dust and other debris from building up. The T-slot covers used in conjunction with the extrusion T-slots provide a great wiring duct to conceal cables.

Select T-slot covers can be inverted and used as a panel gasket to secure panels in the extrusion T-slot.

### Technical Data

Cover/Gasket: Polypropylene, semi-clear, black or yellow

PVC Cover: black or blue

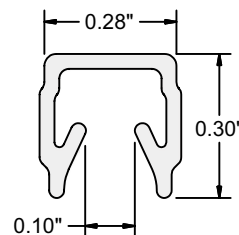
Aluminum Cover: Clear or black anodized

### Ordering Information

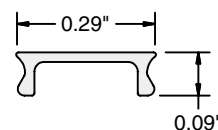
	Unit	Weight	Color	Part #
Cover/Gasket Strip 1.5"	Each @ 78.75"	0.088 lb/ft	Clear	12-101
			Black	12-101B
			Yellow	12-101Y
Aluminum Cover Strip 1.5"	Each @ 78.75"	0.11 lb/ft	Clear	12-102
			Black	12-102B
PVC Cover Strip 1.5"	Each @ 78.75"	0.097 lb/ft	Black	12-111B
			Blue	12-111BL
Cover/Gasket Strip 1"	Each @ 78.75"	0.073 lb/ft	Clear	12-090
			Black	12-090B
			Yellow	12-090Y
Aluminum Cover Strip 1"	Each @ 78.75"	0.077 lb/ft	Clear	12-095
			Black	12-095B

Full length packages are available. Please consult your local sales representative for details and pricing.

### 1" Series



**12-090**



**12-095**