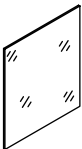
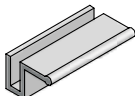
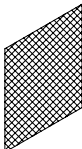
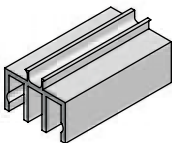

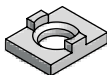
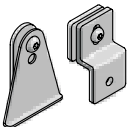
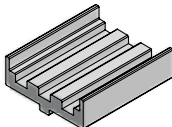
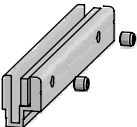

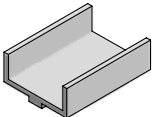
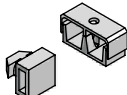


## Section 5

### Panels & Accessories

Panels	78-79		Stiffener/Handle	82	
Wire Mesh	78		Sliding Door Guide	83	
Panel Mounting Blocks	80		Bifold Door Glide	84-85	
Mesh Retainers	81		Rolling Door Guide	86	
Mesh Clamp	82		T-Clips	87	
Panel Extrusion	82		Cable/Hose Holder	87	
			Cable Tie Holder	87	

## Panel Selection Guide

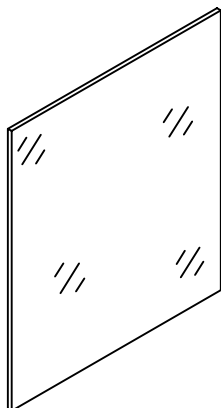
Panel Type	Recommended Use					Opacity		Cost		
	Vertical, Non-Structural	Vertical, Structural	Horizontal, Non-Structural	Shelving, No Load	Shelving, Load Supporting	Transparent or See Through	Opaque	Low	Medium	High
Polycarbonate	✓		✓	✓		✓			✓	
Wire Mesh	✓		✓			✓		✓		
TRESPA®	✓ <sup>1</sup>	✓	✓ <sup>1</sup>	✓ <sup>1</sup>	✓		✓			✓
Expanded PVC	✓		✓				✓	✓		
ABS	✓	✓	✓	✓	✓		✓			
Aluminum Honeycomb	✓	✓		✓	✓		✓		✓	

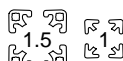
<sup>1</sup> Can be used, but not an economical solution.

## Panel Materials

Polycarbonate	High-impact resistant polycarbonate panels provide clarity, safety, security and energy savings. Meets every industry standard for general purpose window glazing. Clear or light grey smoked
Wire Mesh	Wire mesh provides a high level of security and can be used for safety guarding and enclosures. PVC coating provides a smooth, snag-free surface that is extremely rust and corrosion resistant.
TRESPA®	TRESPA® is a solid grade decorative building panel, suitable for horizontal surfaces and vertical panels. Resistant to scratches, corrosives and solvents. Can be drilled and tapped
Expanded PVC	Light duty colored panel material, primarily for use vertically. Can also be used as light duty shelving material. Not recommended for temperature over 90°F.
ABS	Rigid colored panel material used for both vertical and horizontal panels. One side is smooth, and the other side is textured.
Aluminum Honeycomb	These panels have a very high strength to weight ratio. The panels have thin aluminum skins on each side with a light weight honeycomb core in the center. These panels can be used in all types of applications from walls to shelves. Can be drilled and tapped

## Polycarbonate Panels



**Application**   
High-impact resistant polycarbonate panels provide clarity, safety, security and energy savings. Meets every industry standard for general purpose window glazing.

### Technical Data

Polycarbonate, clear or grey smoked  
UL Listed

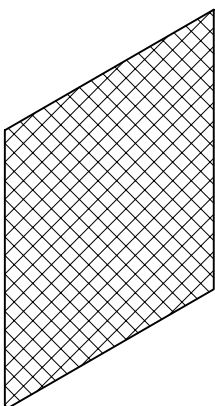
Maximum Size 4' x 8'

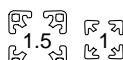
### Ordering Information\*

	Unit	Weight	Part #
1/8" Polycarbonate - Clear	SQ. FT.	0.78 lb/ft <sup>2</sup>	26-790-3
1/4" Polycarbonate - Clear	SQ. FT.	1.56 lb/ft <sup>2</sup>	26-790-6
1/4" Polycarbonate - Light Smoked	SQ. FT.	1.56 lb/ft <sup>2</sup>	26-795-6

\* Full 4' x 8' sheets are available. Just add "P" to the end of the part number to order a full sheet, for example 26-790-6P.

## Wire Mesh



**Application**   
Wire mesh provides a high level of security and can be used for safety guarding and enclosures. Provides a smooth, snag-free surface that is extremely rust and corrosion resistant.

### Technical Data

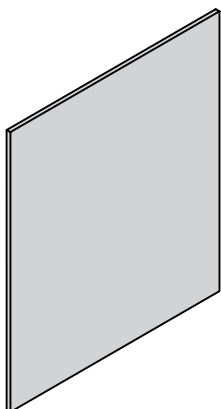
Flat welded steel wire with fuse-bonded PVC coating.

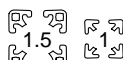
Maximum Size 4' x 8'

Ordering Information*	Wire Gage	Unit	Weight	Part #
1/2" x 1/2" Black	16	SQ. FT.	0.59 lb/ft <sup>2</sup>	26-210-5
1" x 1" Black	12	SQ. FT.	0.85 lb/ft <sup>2</sup>	26-210-10
1" x 1" Yellow	12	SQ. FT.	0.85 lb/ft <sup>2</sup>	26-250-10
1 1/2" x 1 1/2" Black	12	SQ. FT.	0.61 lb/ft <sup>2</sup>	26-210-15
2" x 2" Black	12	SQ. FT.	0.39 lb/ft <sup>2</sup>	26-210-20

\* Full 4' x 8' sheets are available. Just add "P" to the end of the part number to order a full sheet, for example 26-210-5P.

## TRESPA® Panels



**Application**   
TRESPA® is a solid grade decorative building panel, suitable for horizontal surfaces and vertical panels. Resistant to scratches, corrosives and solvents.

### Technical Data

Thermosetting resins, homogeneously reinforced with cellulose fibers.

Non-toxic, asbestos free, has good fire retarding characteristics. Finished on both sides.

Maximum Size 6.1' x 8.37'

Thickness (in)	Weight (lb/ft <sup>2</sup> )	Part #*				
		Black	Grey	Blue	Red	White
0.236 (1/4")	1.74	26-410-6	26-420-6	26-430-6	26-460-6	26-480-6
0.315 (5/16")	2.33	26-410-8	26-420-8	26-430-8	26-460-8	26-480-8
0.394	2.93	—	—	26-430-10	26-460-10	26-480-10

\* Full 4' x 8' sheets are available. Just add "P" to the end of the part number to order a full sheet, for example 26-480-6P.

**Application**

Light duty colored panel material, primarily for use vertically. Can also be used as light duty shelving material.

**Technical Data**

Rigid expanded foam polyvinyl chloride (PVC)

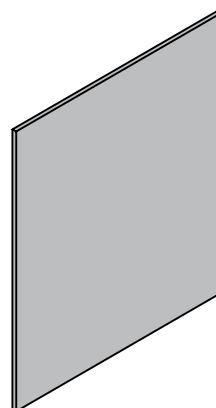
UL Recognized

Maximum Size 4' x 8'

**Ordering Information\***

	Unit	Weight	Part #
1/4" Expanded PVC - Black	SQ. FT.	0.86 lb/ft <sup>2</sup>	26-510-6
1/4" Expanded PVC - Blue	SQ. FT.	0.86 lb/ft <sup>2</sup>	26-530-6
1/4" Expanded PVC - Red	SQ. FT.	0.86 lb/ft <sup>2</sup>	26-560-6
1/4" Expanded PVC - White	SQ. FT.	0.86 lb/ft <sup>2</sup>	26-580-6

\*Full 4' x 8' sheets are available. Just add "P" to the end of the part number to order a full sheet, for example 26-510-6P.

**Expanded PVC****Application**

Rigid colored panel material used for both vertical and horizontal panels. One side is smooth, and the other side is textured.

**Technical Data**

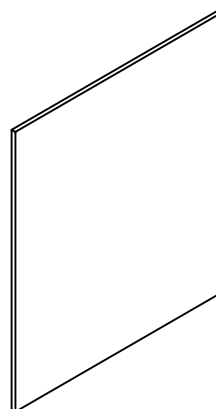
Acrylonitrile butadiene styrene

Maximum Size 4' x 8'

**Ordering Information\***

	Unit	Weight	Part #
1/4" ABS - Black	SQ. FT.	1.4 lb/ft <sup>2</sup>	26-610-6
1/4" ABS - White	SQ. FT.	1.4 lb/ft <sup>2</sup>	26-680-6

\*Full 4' x 8' sheets are available. Just add "P" to the end of the part number to order a full sheet, for example 26-610-6P.

**ABS**

Panels &amp; Accessories

**Application**

These panels have a very high strength to weight ratio. The panels have thin aluminum skins on each side with a light weight honeycomb core in the center. These panels can be used in all types of applications from walls to shelves.

**Technical Data**

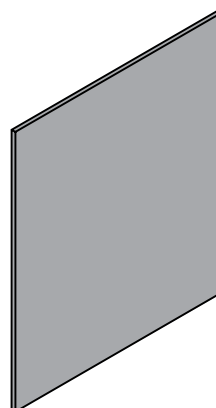
Skins - 6061-T6 Anodized Aluminum

Maximum Size 4' x 8'

**Ordering Information\***

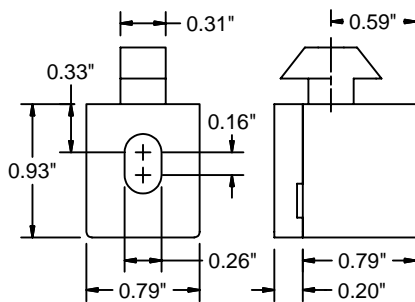
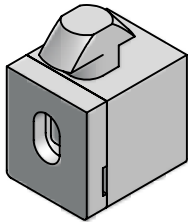
	Unit	Weight	Part #
1/4" Aluminum Honeycomb - Black	SQ. FT.	0.7 lb/ft <sup>2</sup>	26-810-6
1/4" Aluminum Honeycomb - Clear	SQ. FT.	0.7 lb/ft <sup>2</sup>	26-820-6
1/4" Aluminum Honeycomb - Blue	SQ. FT.	0.7 lb/ft <sup>2</sup>	26-830-6
1/4" Aluminum Honeycomb - White	SQ. FT.	0.7 lb/ft <sup>2</sup>	26-880-6

\*Full 4' x 8' sheets are available. Just add "P" to the end of the part number to order a full sheet, for example 26-810-6P.

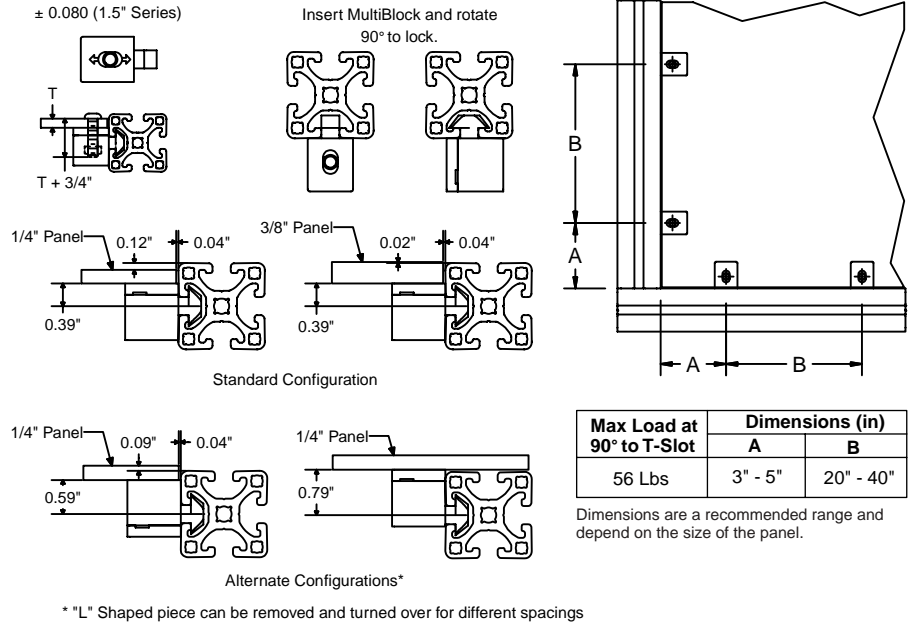
**Aluminum Honeycomb**

# Multiblock

## 1.5" Series



22-115



### Application

Versatile block for mounting panels and screens. The block locks into the T-slot at a 90° position with an offset design to suit various panel thicknesses. Moveable captive nut provides larger alignment range for locating through holes in panels.

### Ordering Information

Multiblock PA 1.5", 1/4-20"

### Technical Data

Glass Filled Nylon, Black  
Square Steel 1/4-20 Nut, Zinc Plated

### Unit

Each

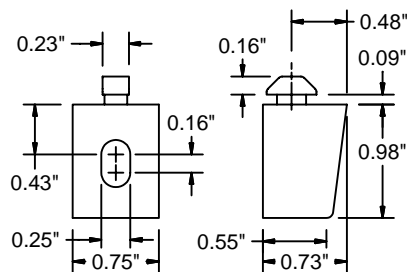
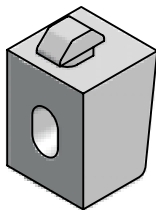
### Weight

0.21 oz

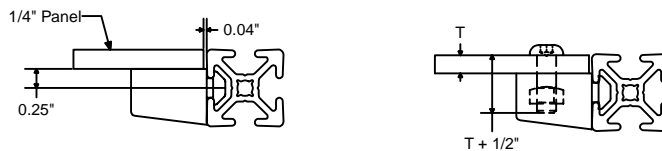
### Part #

22-115

## 1" Series



22-116



### Application

Versatile block for mounting panels and screens for the 1" series. The block locks into the T-slot at a 90° position. Movable captive nut provides larger alignment range for locating through holes in panels.

### Ordering Information

Multiblock PA 1", 1/4-20"

### Technical Data

Glass Filled Nylon, Black  
Square Steel 1/4-20 Nut, Zinc Plated

### Unit

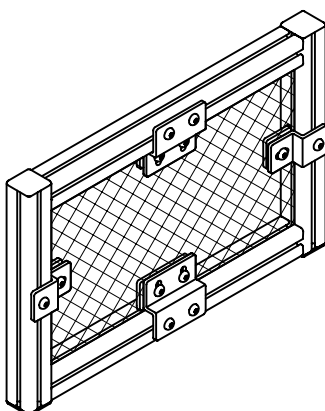
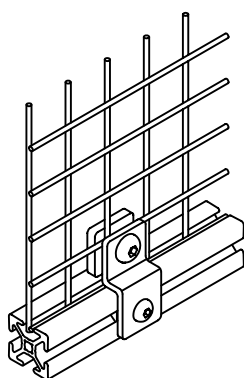
Each

### Weight

0.14 oz

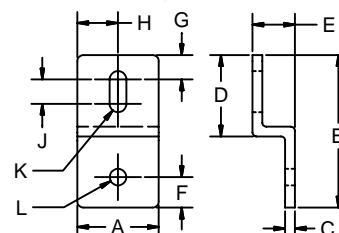
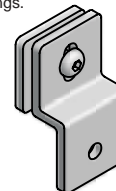
### Part #

22-116



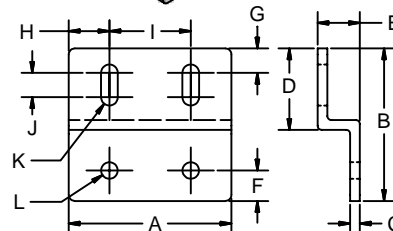
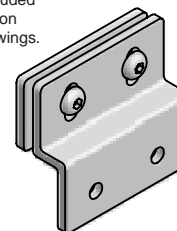
**Deluxe**

Back Plate included  
but not shown on  
dimension drawings.



**20-200**  
**20-202**

Back Plate included  
but not shown on  
dimension drawings.



**20-201**  
**20-203**

### Application

Deluxe retainers are used to securely fasten wire mesh within the T-slot.

### Technical Data

Aluminum, Clear Anodized  
5/16-18 BHCS included to secure back plate to retainer.

### Recommended Fastening Hardware (Order Separately)

#### 1.5" Series

Screws 5/16-18 x 5/8" [25-110-5]

T-Nuts Any 1.5" Series 5/16 [25-002, 20-082, 20-182]

#### 1" Series

Screws 1/4-20 x 3/8" [25-106-4]

T-Nuts Any 1" Series 1/4 [25-031, 25-034, 25-036]

Style	Dimensions (in)												Wt. (lbs)	Part #
	A	B	C	D	E	F	G	H	I	J	K	L		
Single 1	0.98	1.97	0.13	0.98	0.52	0.43	0.32	0.49	—	0.20	0.32	0.32	0.06	20-200
Double 1	2.09								1.10				0.13	20-201
Single 1.5	1.57	2.95	0.19	1.57	0.82	0.59	0.47	0.79	—	0.47	0.32	0.32	0.16	20-202
Double 1.5	3.15								1.58				0.31	20-203

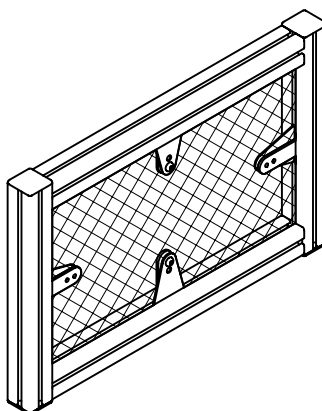
### Application

Economical solution for securely fastening wire mesh to 1.5" Series profiles.

### Technical Data

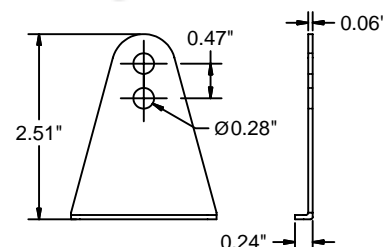
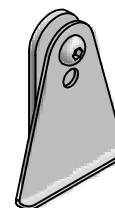
Steel, Zinc Plated Black

1/4-20 BHCS included to secure back plate to retainer.



**Economy**

Back Plate included but  
not shown on dimension  
drawings.



**22-111**

### Ordering Information

Economy Wire Mesh Retainer

Unit

Each

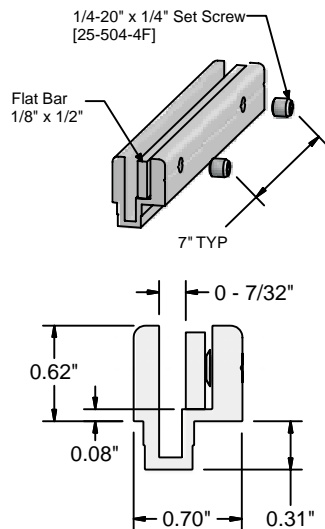
Weight

0.13 lb

Part #

22-111

## Mesh Clamp



### Application

Captures wire mesh panels up to 7/32" thick. Excellent for constructing safety guards when wire mesh does not need to be removable. Installation into 1.5" Series profiles is accomplished without fasteners by pressing into T-slot. Support stanchion becomes integral part of panel frame.

### Technical Data

Aluminum, Clear Anodized

### Weight

0.36 lb/ft

Profile is tapped every 7". Includes 1/8" x 1/2" aluminium clamp strip and (1) 1/4-20" x 1/4" Flat Point Set screw per tapped hole.

### Ordering Information

Mesh Clamp Cut off max 156" (13')

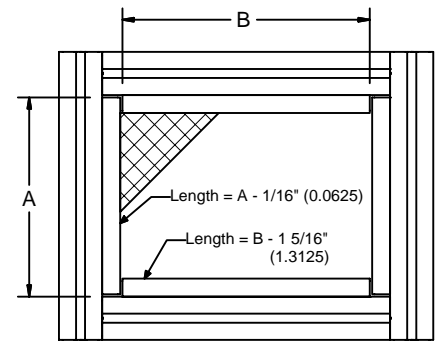
\*Saw cut necessary for cut to length

### Unit

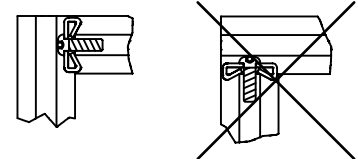
### Part #

12-010

19-001



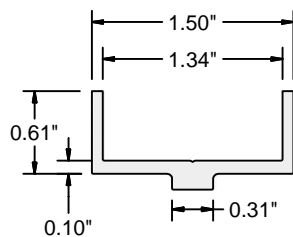
\* Wire Mesh Size: A - 1/4" & B - 1/4"



Standard fastener position is critical to avoid interference with the mesh clamp.

12-010

## Panel Extrusion



### Application

Extrusion for mounting 1.34" (34mm) thick insulated panels (available by special order) onto 1.5" series profiles. Extrusion can be serviced to mount on profile using T-nuts.

### Technical Data

Aluminum, Clear Anodized

### Weight

0.32 lb/ft

### Ordering Information

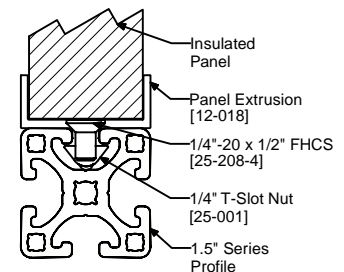
Panel Extrusion Cut off 240" (20')

\* Saw cut necessary for cut to length

### Unit

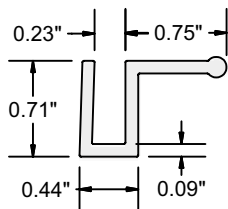
### Part #

12-018



12-018

## Stiffener/Handle



### Application

Designed as a combination handle and stiffener for sliding panel doors 1/4" thick. Panels snap into the profile slot and may be additionally secured by an adhesive or fastener.

### Technical Data

Aluminum, Clear Anodized

### Weight

0.30 lb/ft

### Ordering Information

Stiffener/Handle Profile

\*Saw cut necessary for cut to length

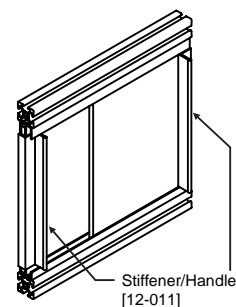
### Unit

Cut off max. 120" (10')

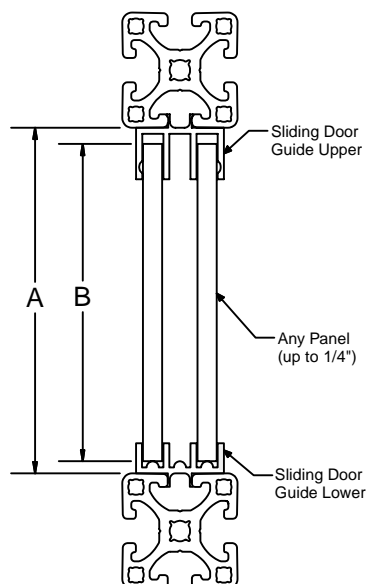
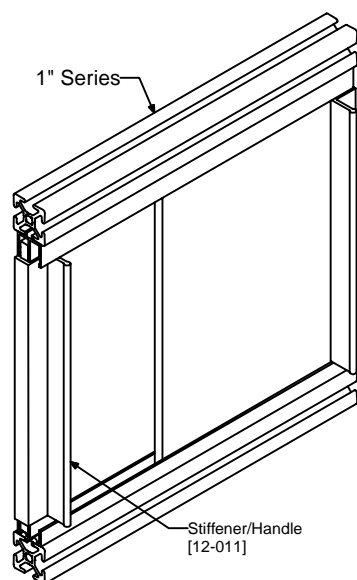
### Part #

12-011

19-001

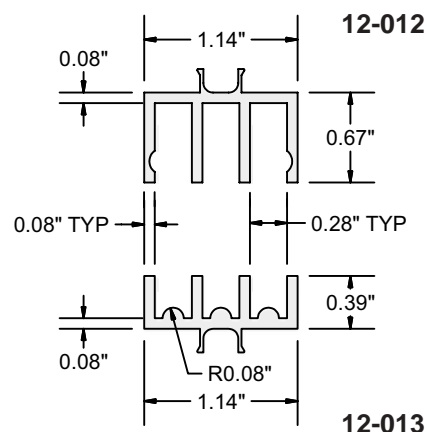


12-011



## Sliding Door Guide

### 1.5" Series



	1.5" Series	1" Series
Removable	$B = A - 9/16"$	$B = A - 9/16"$
Non-removable	$B = A - 3/8"$	$B = A - 7/16"$

\*Designed for panels up to 1/4" (6.4mm)

### Application

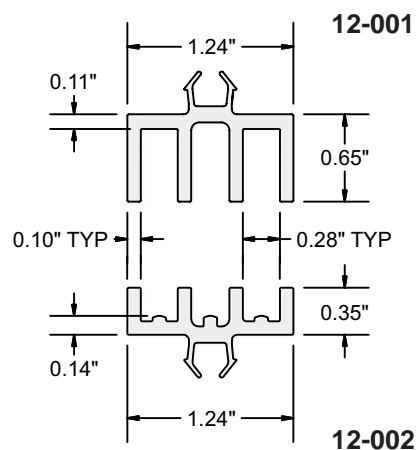
To guide light duty panels as sliding windows and access ports for safety guards and enclosures. Installation onto 1.5" or 1" Series Profiles is accomplished without fasteners by snapping into t-slot. Design of lower guide reduces friction of sliding panels. Design of upper guide facilitates easy, lift-out removal of panel without disassembly of structure.

### Technical Data

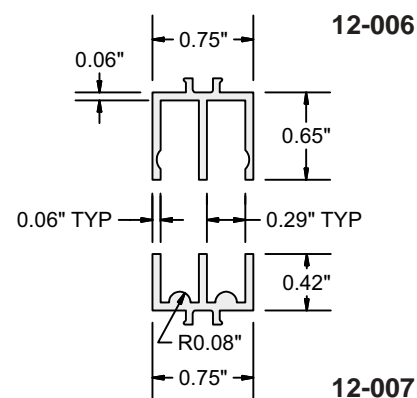
12-012	AL, Clear Anodized	0.30 lb/ft
12-013	AL, Clear Anodized	0.34 lb/ft
12-001	High Impact PVC, Blk	0.12 lb/ft
12-002	High Impact PVC, Blk	0.16 lb/ft
12-006	AL, Clear Anodized	0.10 lb/ft
12-007	AL, Clear Anodized	0.09 lb/ft

### Ordering Information

	Unit	Part #
Sliding Door Guide 1.5", AL, Upper	Cut off max. 120" (10')	12-012
Sliding Door Guide 1.5", AL, Lower	Cut off max. 120" (10')	12-013
Sliding Door Guide 1.5", PVC, Upper	Cut off max. 120" (10')	12-001
Sliding Door Guide 1.5", PVC, Lower	Cut off max. 120" (10')	12-002
Sliding Door Guide 1", AL, Upper	Cut off max. 120" (10')	12-006
Sliding Door Guide 1", AL, Lower	Cut off max. 120" (10')	12-007
*Saw cut necessary for cut to length		19-001

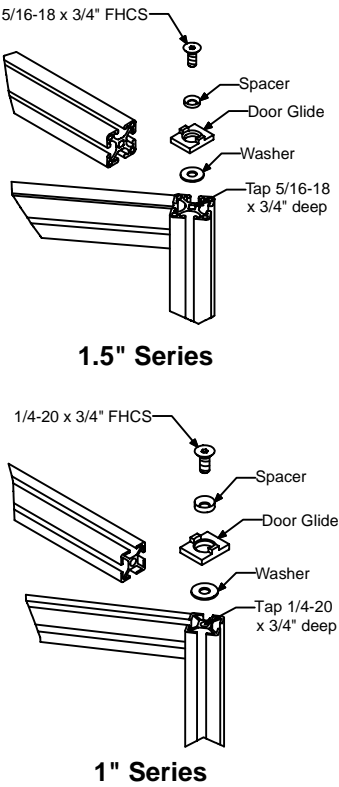
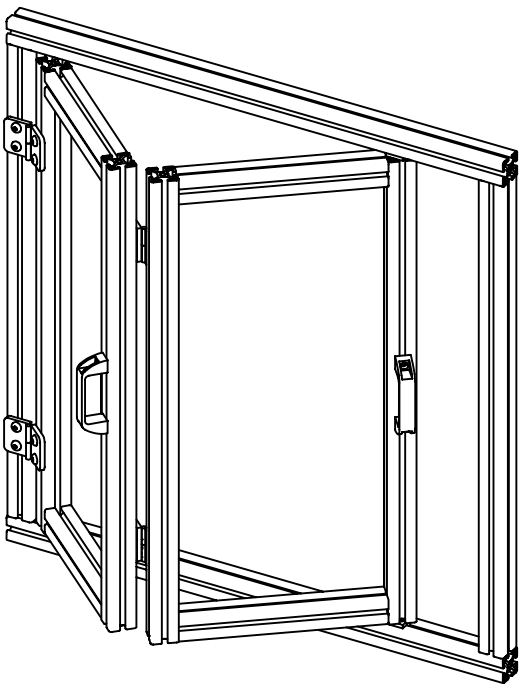
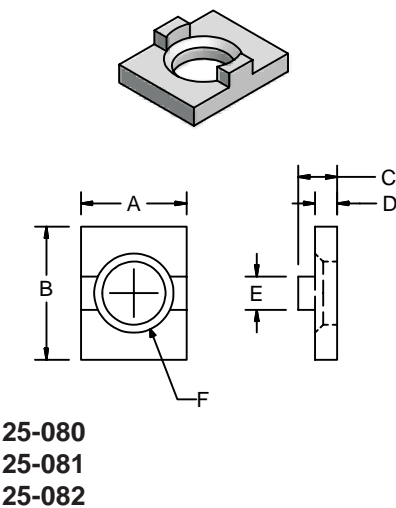


### 1" Series





# Bifold Door Glides



## Application

Bifold doors are used in very confined areas. Door glides allow rotational and sliding motion at the top and bottom of a vertical member within a permitted bifold door frame. Two glides (one top and one bottom) are required per door.

## Technical Data

- Door Glide – UHMW
- Spacer – Steel, Zinc Plated
- Washer – Steel, Zinc Plated

\* Ships complete with 2 glides, 2 screws, 2 spacers and 2 washers.

Part #	Dimensions (in)					
	A	B	C	D	E	F
25-080	1.44	1.26	0.370	0.210	0.315	Ø.598 thru c'sink Ø.750 x 90°
25-081	1.00	1.00	0.370	0.210	0.315	Ø.438 thru c'sink Ø.563 x 82°
25-082	1.00	1.00	0.370	0.210	0.250	Ø.438 thru c'sink Ø.563 x 82°

Use the following chart to help select the correct part for your application.

Frame Series	Door Series	Glide Part #
1.5" Series	1.5" Series	25-080
1.5" Series	1" Series	25-081
1" Series	1" Series	25-082

## Design Examples

Examples consider the hinges to be medium duty plastic hinges (page 67). Other hinges can be used and dimensions would only be slightly affected.

To determine the width of the narrow door, subtract the sum of the door gaps and 1.885" from the frame's inside width dimension, then divide by 2.

Example:

$$26.00 - (0.07 + 0.07 + 0.375 + 1.885)$$

$$26.00 - 2.4 = 23.60$$

$$\frac{23.60}{2} = 11.80$$

To determine the width of the wide door, add 1.885" to the width of the narrow door.

Example:

$$11.80 + 1.885 = 13.685$$

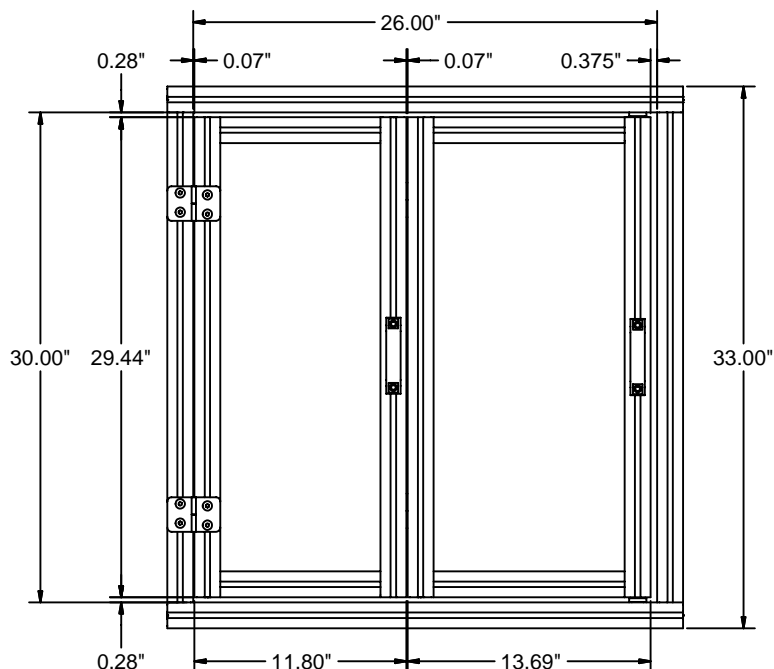
To determine vertical door dimension, subtract clearance required for guides and washers (0.56") from the vertical opening dimension.

Example:

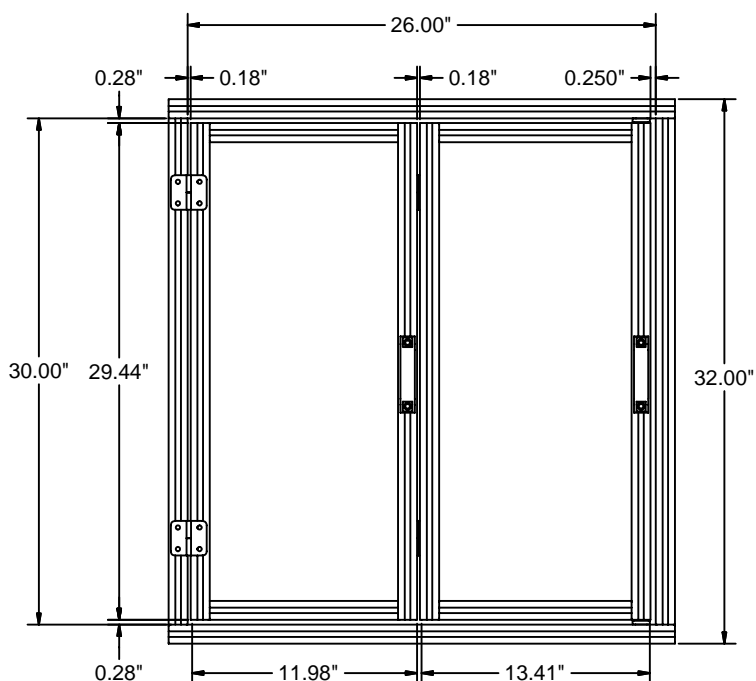
$$30.00 - 0.56 = 29.44$$

## Bifold Door Glides

**Design Example for 1.5" Bifold Door**



**Design Example for 1" Bifold Door**



To determine the width of the narrow door, subtract the sum of the door gaps and 1.430" from the frame's inside width dimension, then divide by 2.

Example:

$$26.00 - (0.18 + 0.18 + 0.25 + 1.430)$$

$$26.00 - 2.04 = 23.96$$

$$\frac{23.96}{2} = 11.98$$

To determine the width of the wide door, add 1.430" to the width of the narrow door.

Example:

$$11.98 + 1.430 = 13.41$$

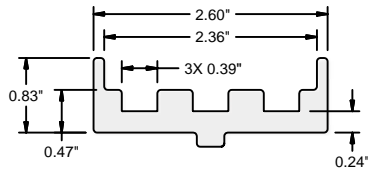
To determine vertical door dimension, subtract clearance required for guides and washers (0.56") from the vertical opening dimension.

Example:

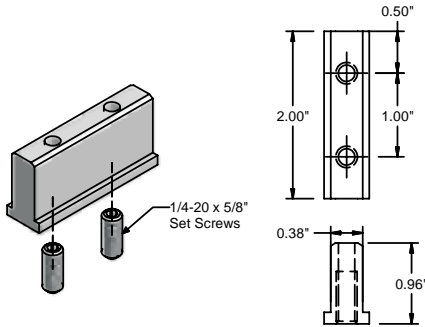
$$30.00 - 0.56 = 29.44$$

**\* When using 1" Series for the doors and 1.5" Series for the frame, use the design example for 1" Series.**

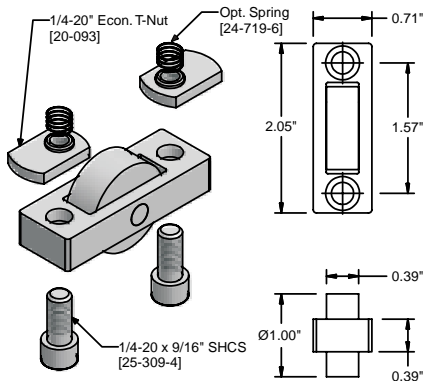
# Rolling Door Guide



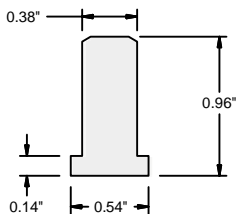
12-022



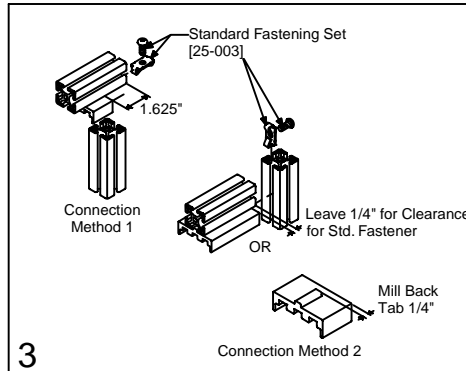
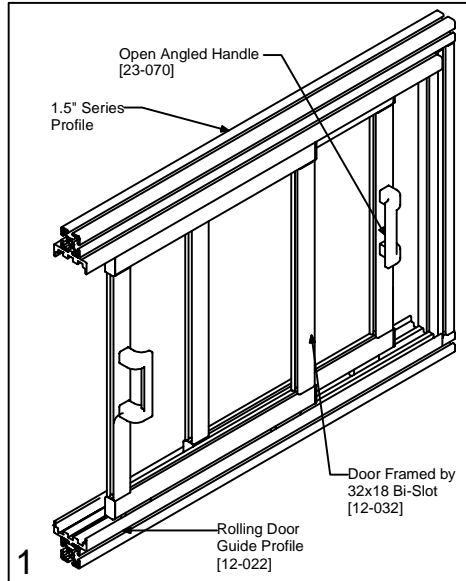
21-073



21-075



12-421



- 2 Length of vertical door member:  $B = A - 4.375"$   
For 1/4" Panel with panel gasket [12-106]:  $C$  (panel height) =  $B + 0.625"$   
For 5/16" Panel without gasket:  $C$  (panel height) =  $B + 0.9375"$   
3-4 Connection methods for assembling the door guide to 1.5" series profiles.

## Application

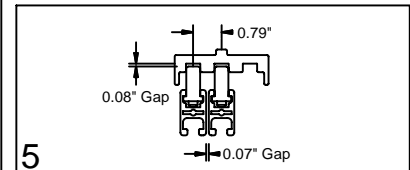
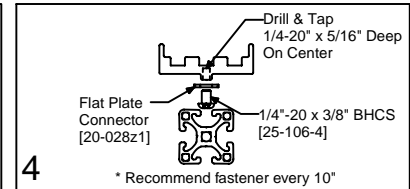
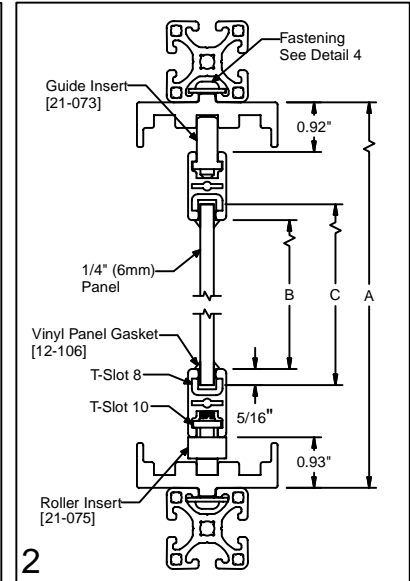
Excellent solution for larger doors. Roller system allows the doors to slide easily.

## Technical Data

- 12-022 Profile – Aluminum, Clear Anodized (1.20 lb/ft)  
12-421 UHMW Guide Profile – UHMW White  
21-073 Guide Insert – UHMW White  
Includes (2) 1/4-20 x 5/8" Set Screws [25-510-4U]  
21-075 Roller Insert – Roller (Delrin Black),  
Housing (Aluminum, Clear Anodized), Pin (Stainless)  
Includes (2) 1/4-20 x 9/16" SHCS [25-308-4], (2) Offset  
1/4-20 T-Nuts [20-193], and (2) Springs [24-719-6]

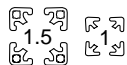
## Ordering Information

- Rolling Door Guide  
UHMW Guide Profile  
\*Saw cut needed for cut to length  
Guide Insert Set  
Roller Insert Set



Unit	Part #
Cut off max. 156" (13')	12-022
Cut off max. 120" (10')	12-421
	19-001
1 Set	21-073
1 Set	21-075

### Application

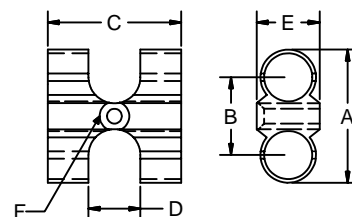
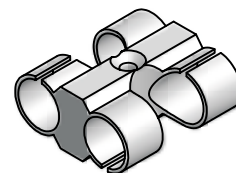


Mounting element with two separate channels for fast, easy securing and routing of open wiring or tubing.

### Technical Data

Glass Filled Nylon, Black

## T-Clips



Order all mounting hardware separately except where noted.

Range (in)	Dimensions (in)						Part #
	A	B	C	D	E	F	
5/32 - 1/4	0.60	0.40	0.70	0.24	0.36	0.13	22-204*
1/4 - 5/16	0.80	0.48	0.80	0.32	0.36	0.13	22-206*
5/16 - 3/8	1.00	0.60	0.96	0.40	0.48	0.16	22-209z1
3/8 - 1/2	1.20	0.74	1.10	0.47	0.57	0.16	22-211z1
1/2 - 5/8	1.36	0.82	1.33	0.56	0.64	0.17	22-213z1
5/8 - 3/4	1.68	1.04	1.61	0.68	0.80	0.20	22-216z1
3/4 - 7/8	2.20	1.24	1.88	0.78	0.92	0.22	22-219z1
7/8 - 1	2.48	1.56	2.40	0.92	1.10	0.25	22-223z1

\* 22-204 & 22-206 come complete with an M3 (metric) screw and special "Zn" nut for mounting on 1.5" profiles only.

### Application

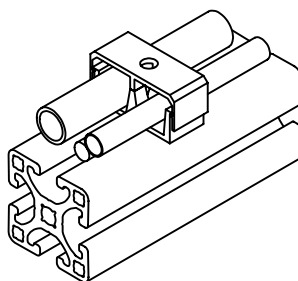


Mounting element with two separate channels for routing open wiring or tubing of various sizes along the profiles or other surfaces.

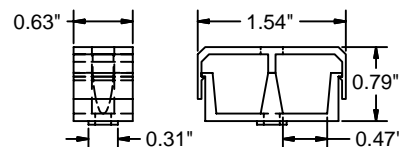
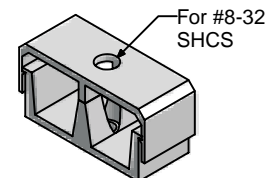
### Technical Data

Glass Filled Nylon, Black

Complete with #8-32 Screw and #8-32 economy T-Nut for 1.5" Series.



## Cable/Hose Holder



22-230

### Ordering Information

Cable/Hose Holder

Unit

Each

Weight

0.28 oz

Part #

22-230

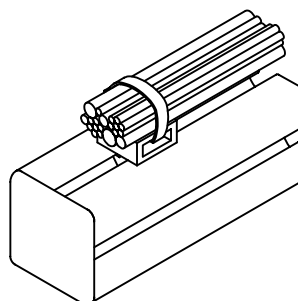
### Application



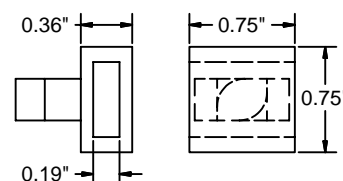
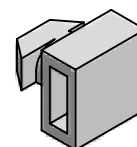
Mounting element for fast securing of open wiring or tubing with a plastic tie (not included). Insert holder into T-slot at any location and lock in position by turning 90° clockwise.

### Technical Data

Glass Filled Nylon, Black



## Cable Tie Holder



22-202

### Ordering Information

Cable Tie Holder

Unit

Each

Weight

0.14 oz

Part #

22-202