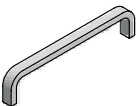
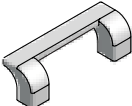
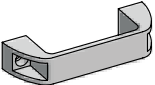
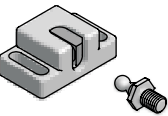
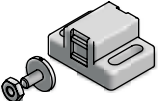
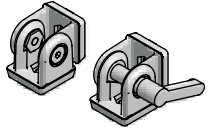
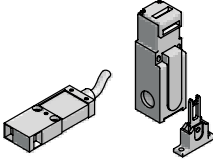
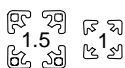


Section 4

Handles, Hinges & Safety Switches

Light Duty Handles	53		Dead Bolt	62	
Angle Handles	53		Door Stops	63	
Plastic Handles	54		Ratchet Lock	63	
Tube Handles	54		Aluminum Hinges	64-65	
Quarter Turn Latches Latch Accessories	55-56 57		Steel Hinges	66	
Ball Catch Brackets - 1.5" Brackets - 1" Ball Plungers	58 58 59 59		Plastic Hinges	67	
Magnetic Catches	60		Adjustable Hinges Positioning Hinges	68 68	
Grabber™ Catch Grabber Catch w/Micro Switch	61 61		Pivot Joints	69	
Slam Latch	62		Safety Switches	70-74	

Application

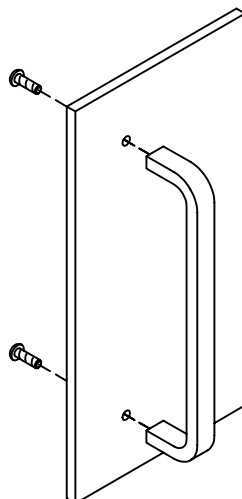
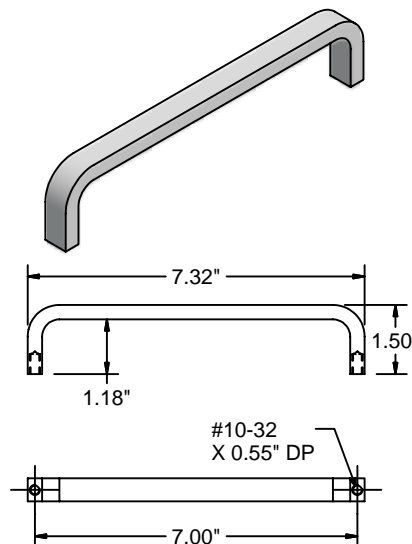
Handle for light duty doors with a maximum thickness of 5/16". Primarily for mounting to a stand alone panel.

Technical Data

Aluminum, Clear Anodized

Recommended Fastening Hardware (Included)

Two #10-32 x 5/8" BHCS [25-110-2]

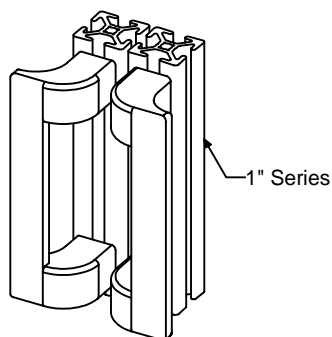
**Light Duty****23-030****Ordering Information**

Light Duty Aluminum Handle

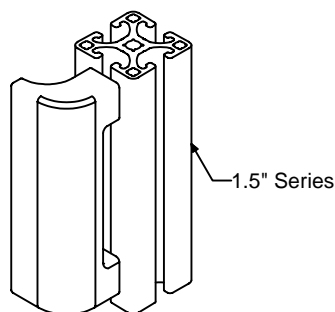
Unit
Each

Weight
0.19 lb

Part #
23-030



1" Series



1.5" Series

Application

Handle for double doors to keep operator's hands from hitting when opening.

Technical Data

Glass-Fiber Reinforced Plastic
Black Matte Finish

Recommended Fastening Hardware (Order Separately)

1.5" Series	Screws	1/4-20 X 5/8" BHCS [25-110-4]
	T-Nuts	Any 1.5" Series 1/4 [25-001, 20-083]
1" Series	Screws	1/4-20 X 1/2" BHCS [25-108-4]
	T-Nuts	Any 1" Series 1/4 [25-031, 25-034]

Ordering Information

Open Angled Handle

Closed Angled Handle

Unit
Each

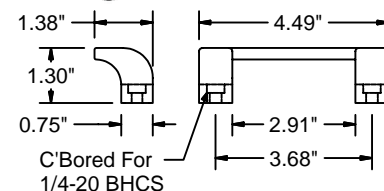
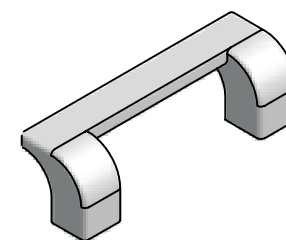
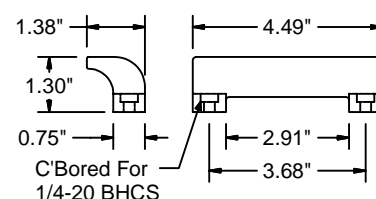
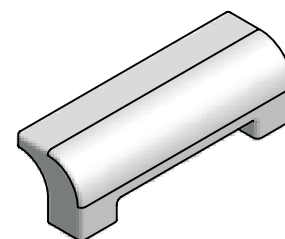
Weight
0.19 lb

Part #
23-070

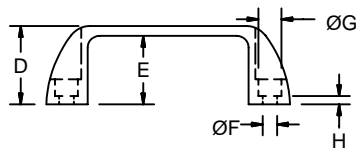
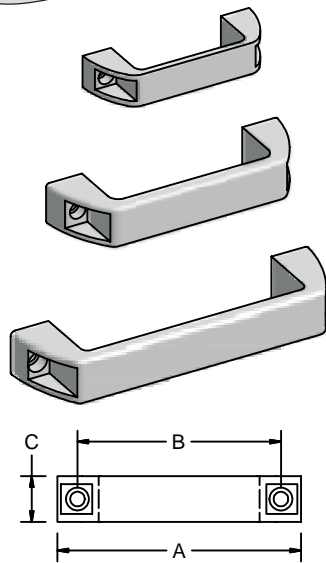
Unit
Each

Weight
0.21 lb

Part #
23-071

**23-070****23-071**

Plastic Handles



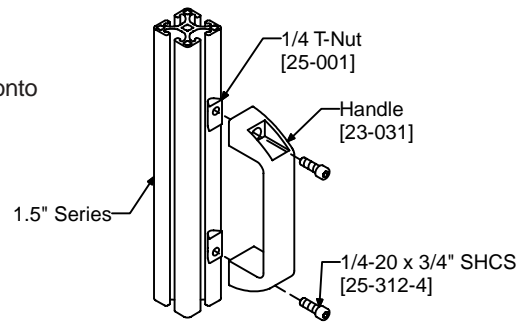
23-031, 23-032z1, 23-033

Application 1.5" 1"

Multipurpose handle for mounting onto plastic panels or profiles.

Technical Data

Glass-Filled Nylon, Black

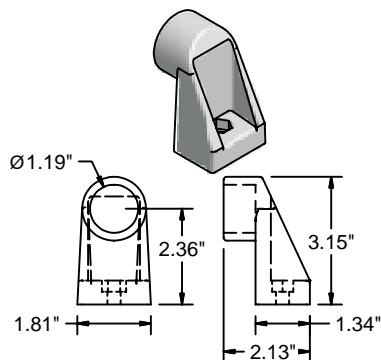


Recommended Fastening Hardware (Order Separately)

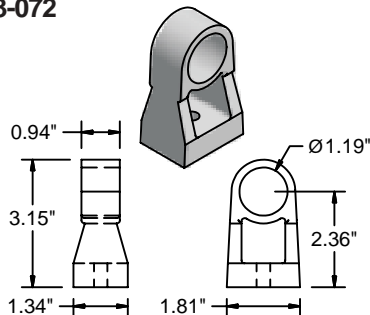
23-033	1.5" Series	Screws	1/4-20 X 11/16" SHCS [25-311-4]
		T-Nuts	Any 1.5" Series 1/4 [25-001, 20-083]
	1" Series	Screws	1/4-20 X 1/2" SHCS [25-308-4]
		T-Nuts	Any 1" Series 1/4 [25-031, 25-034]
23-031	1.5" Series	Screws	1/4-20 X 3/4" SHCS [25-312-4]
		T-Nuts	Any 1.5" Series 1/4 [25-001, 20-083]
	1" Series	Screws	1/4-20 X 5/8" SHCS [25-310-4]
		T-Nuts	Any 1" Series 1/4 [25-031, 25-034]
23-032z1	1.5" Series	Screws	5/16-18 x 3/4" SHCS [25-312-5]
		T-Nuts	Any 1.5" Series 5/16 [25-002, 20-082]

Dimensions								Weight (lb)	Part #
A	B	C	D	E	F	G	H		
4.41	3.68	0.83	1.42	1.18	0.256	0.413	0.236	0.07	23-033
6.14	5.20	1.06	1.77	1.46	0.256	0.413	0.354	0.02	23-031
8.03	7.05	1.10	1.97	1.65	0.335	0.512	0.315	0.16	23-032z1

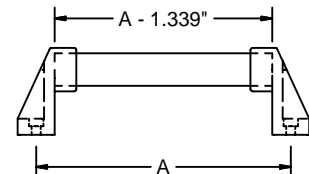
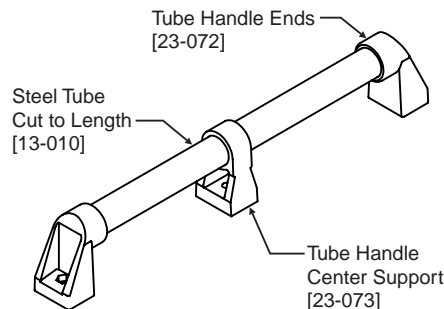
Tube Handles



23-072



23-073



Application 1.5" 1"

Handle that allows variable lengths.
Order Ends and Tube cut to length for a custom length handle.

Technical Data

Polyamide, Black

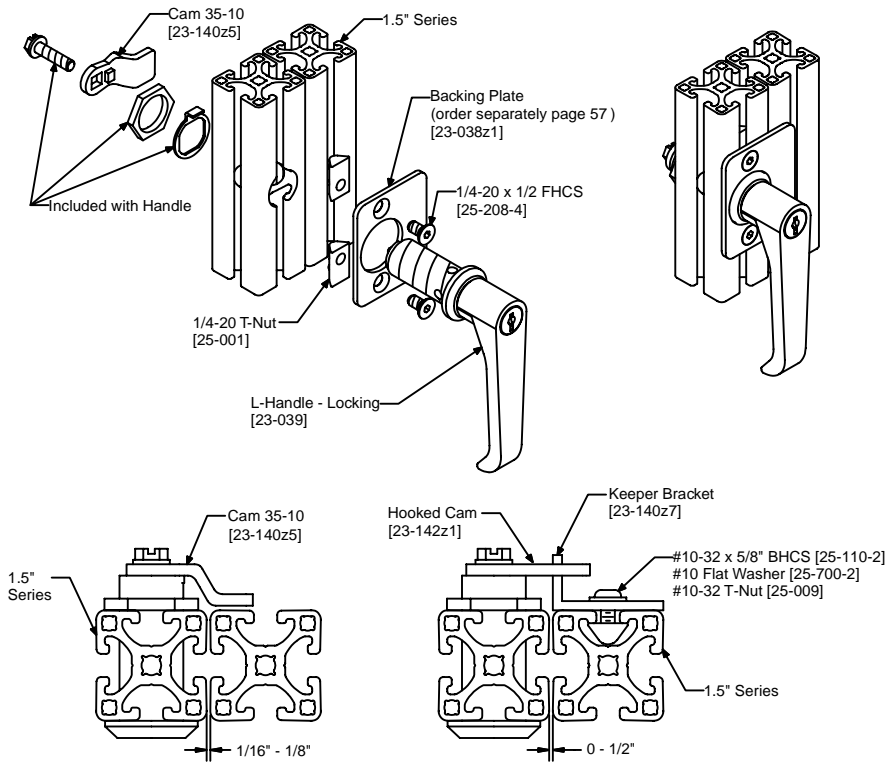
Recommended Fastening Hardware (Order Separately)

Screws	[23-072] – 5/16-18 x 3/4" SHCS [25-312-5]
	[23-073] – 5/16-18 x 1" SHCS [25-316-5]
T-Nuts	Any 1.5" Series 5/16 [25-002, 20-082]

Ordering Information

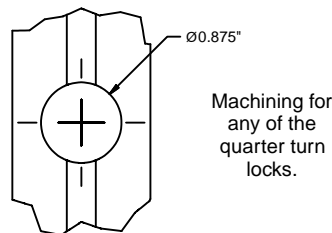
	Unit	Weight	Part #
Tube Handle Ends	Set of 2 (R&L)	0.5 lb	23-072
Tube Handle Center Support	Each	0.3 lb	23-073*
Coated Steel Tube	Cut off Max 96" (8')	0.24 lb/ft	13-012

*Order Center Support for handles over 36" (3') long.



Application

Quarter turn latches can be used for swinging, sliding or bi-fold door applications. T-handle and wing knob styles eliminate the need for a door handle.



Technical Data

Handle

Polyamide, Black

Housing/Insert:

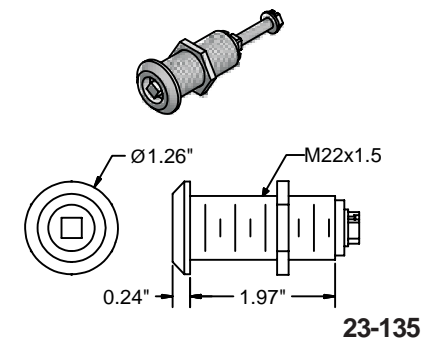
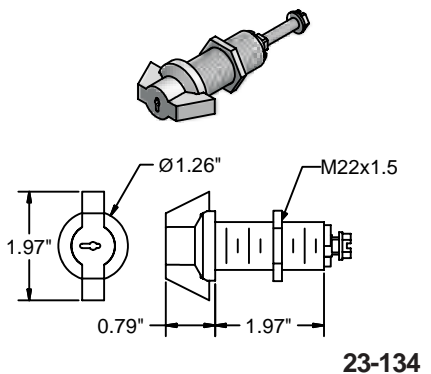
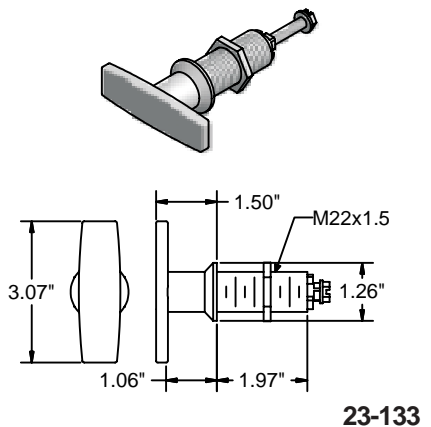
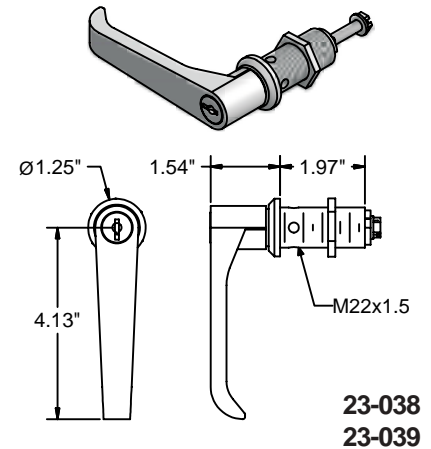
Zinc Die, Black powder coated

Note: All cams must be ordered separately (see page 57).

Ordering Information	Unit	Weight	Part #
L-Handle, Non-Locking	Each	0.46 lb	23-038
L-Handle, Locking ¹	Each	0.46 lb	23-039
T-Handle, Non-Locking	Each	0.44 lb	23-133
Wing Knob, Locking ¹	Each	0.35 lb	23-134
Square Insert ^{2, 3}	Each	0.24 lb	23-135

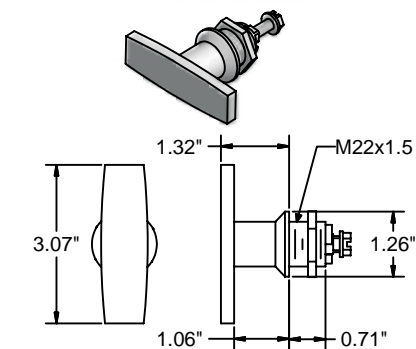
- 1 All locks come keyed alike; special keying options available as special order.
- 2 Additional style inserts are available as special orders.
- 3 Order key separately (see page 57).

Quarter Turn Extrusion Mount

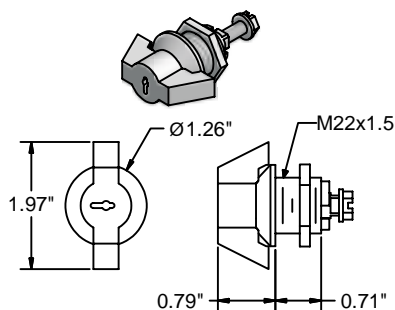


Handles, Hinges
 & Switches

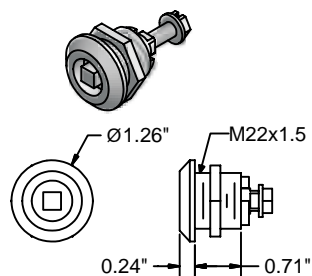
Quarter Turn Panel Mount



23-143

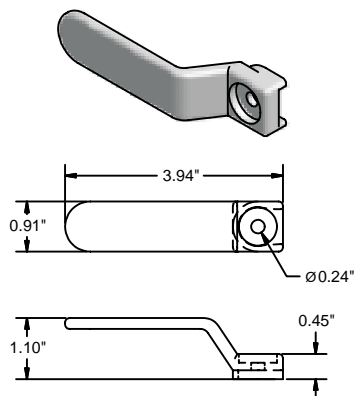


23-144

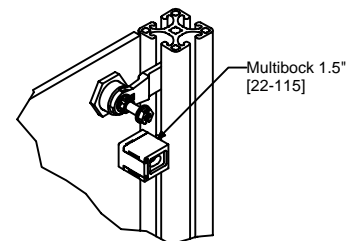
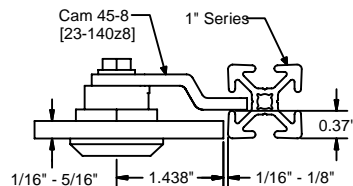
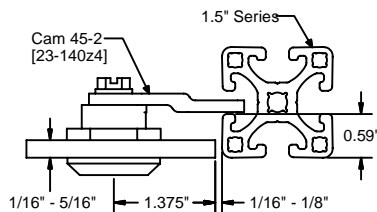


23-145

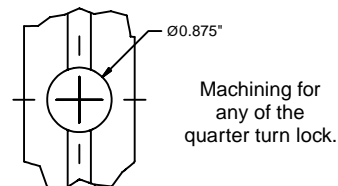
Inside Handle



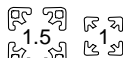
23-159



Add a multiblock as a door stop for panel doors.



Application



Quarter turn latches can be installed into a swinging door panel, and the latch can be used with either 1.5" or 1" profiles. T-Handle and wing knob styles eliminate the need for a door handle.

Technical Data

Handle
Polyamide, Black
Housing/Insert:
Zinc Die, Black powder coated

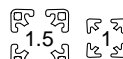
Note: All cams must be ordered separately.

Ordering Information

Unit	Weight	Part #
T-Handle, Non-Locking	Each	0.30 lb
Wing Knob, Locking ¹	Each	0.20 lb
Square Insert ^{2,3}	Each	0.11 lb

- 1 All locks come keyed alike; special keying options available as special order.
- 2 Additional style inserts are available as special orders.
- 3 Order key separately.

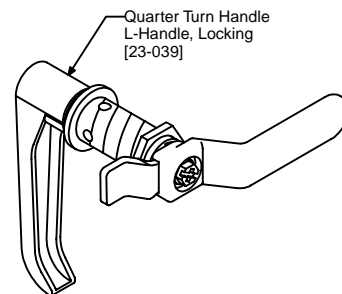
Application



Inside handle can be combined with any of our quarter turn handles to provide a double handle system. The handle is designed to slip over the cam on the inside of the door.

Technical Data

Polyamide, Red



Inside handle shown in combination with a L-Handle Locking.

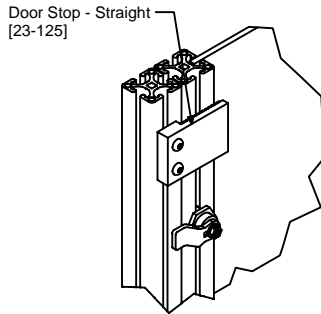
Ordering Information

Unit	Weight	Part #
Inside Handle	Each	0.02 lb

Application

Various cams and keys for the quarter turn latches. You must order one cam per quarter turn lock.

Part #	Dimensions (in)		
	A	B	C
23-140z4	1.77	0.16	0.08
23-140z5	1.38	0.12	0.39
23-140z8	1.77	0.16	0.31

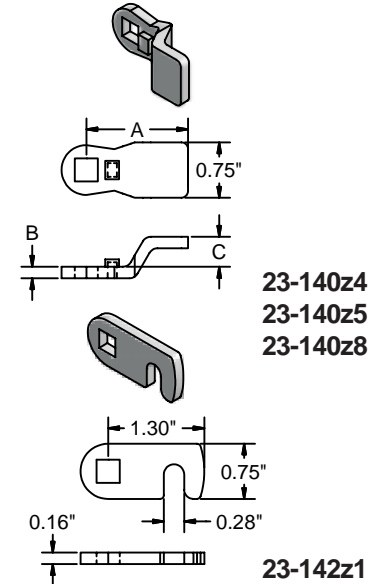


Add a door stop to swinging door to create a positive stop.

Ordering Information

	Unit	Weight	Part #
Cam 45-2	Each	0.05 lb	23-140z4
Cam 35-10	Each	0.04 lb	23-140z5
Cam 45-8	Each	0.05 lb	23-140z8
Hooked Cam	Each	0.03 lb	23-142z1
Spare Key for 23-134/23-144	Each	0.01 lb	23-140z1
Square Key for 23-135/23-145	Each	0.01 lb	23-140z2

Cams & Keys



Application

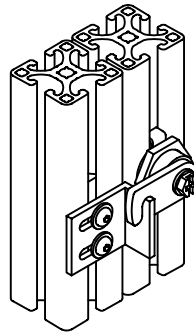
Keeper brackets are used with a hooked cam on bi-fold or sliding doors.

Technical Data

Aluminum, Clear Anodized

Recommended Fastening Hardware (Order Separately)

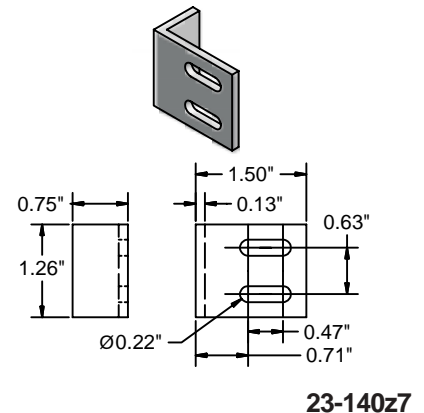
Screws #10-32 x 5/8" BHCS [25-110-2]
Washer #10-32 Flat Washer [25-700-2]
T-Nut Any #10-32 [25-009, 25-088]



Ordering Information

	Unit	Weight	Part #
Keeper Bracket	Each	0.03 lb	23-140z7

Keeper Bracket



Application

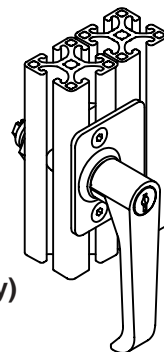
Backing plates can be added to a quarter turn latch and provide a positive stop for the door.

Technical Data

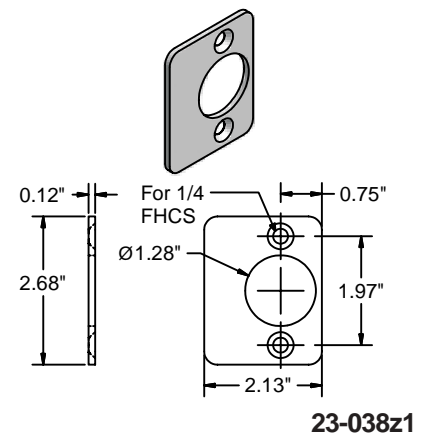
Steel, Matte Black Powder Coated

Recommended Fastening Hardware (Order Separately)

Screws 1/4-20 x 1/2" FHCS [25-208-4]
T-Nuts Any 1.5" Series 1/4 [25-031, 25-034, 25-036]



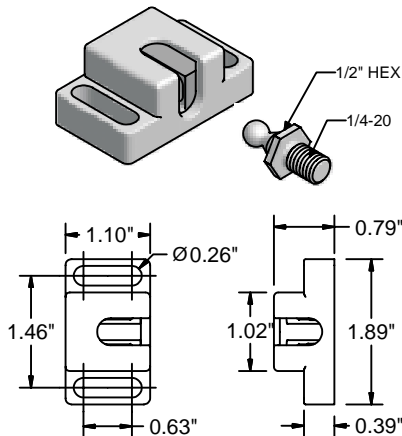
Backing Plate



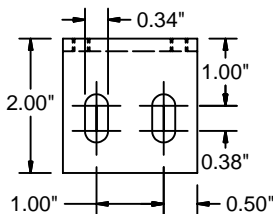
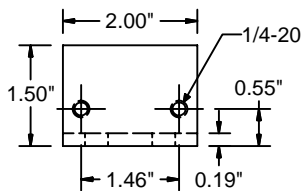
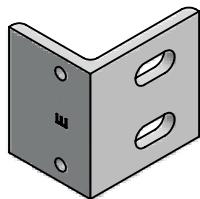
Ordering Information

	Unit	Weight	Part #
Backing Plate	Each	0.01 lb	23-038z1

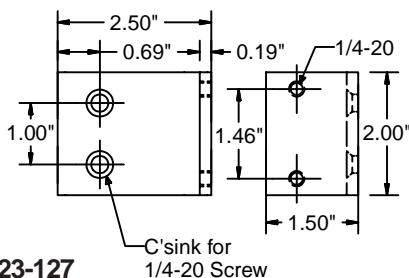
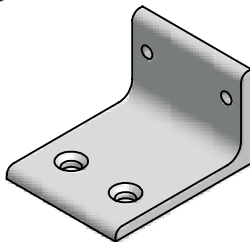
Ball Catch



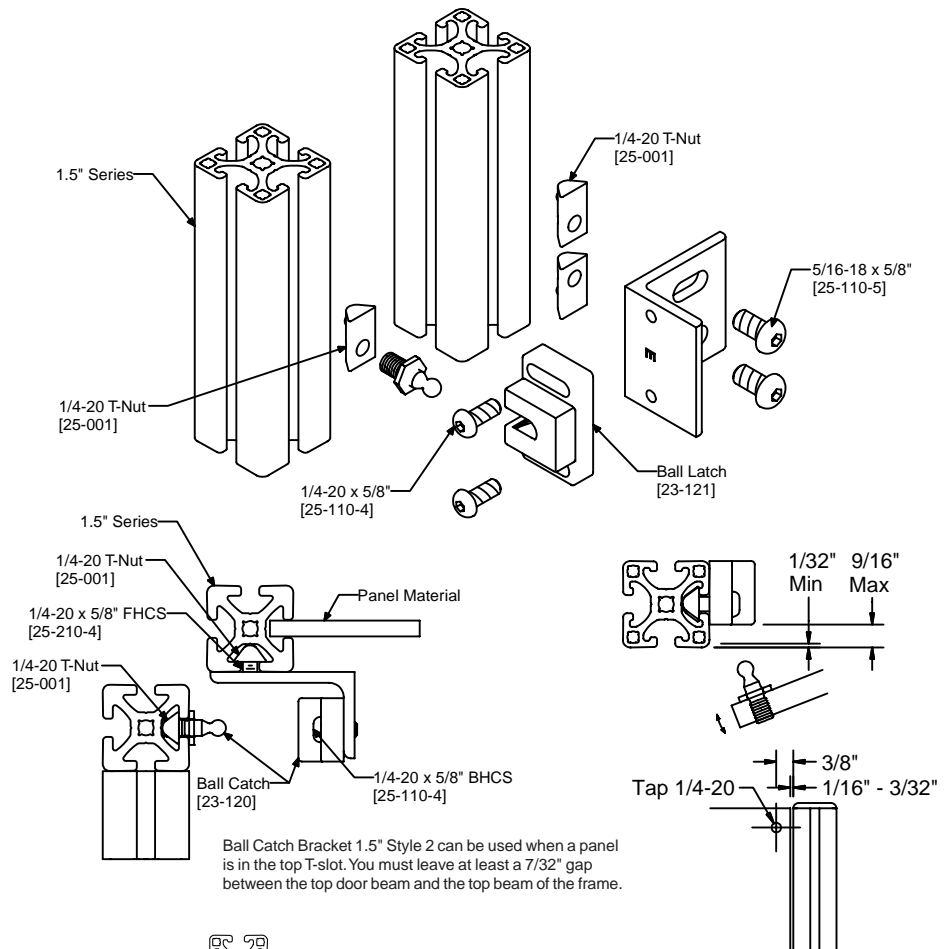
23-121



23-120



23-127



Application

Catch for use on swinging and sliding doors. Brackets can be used to mount the catch in the location that you desire. When using the Style 2 bracket, you must leave a 7/32" gap.

Technical Data

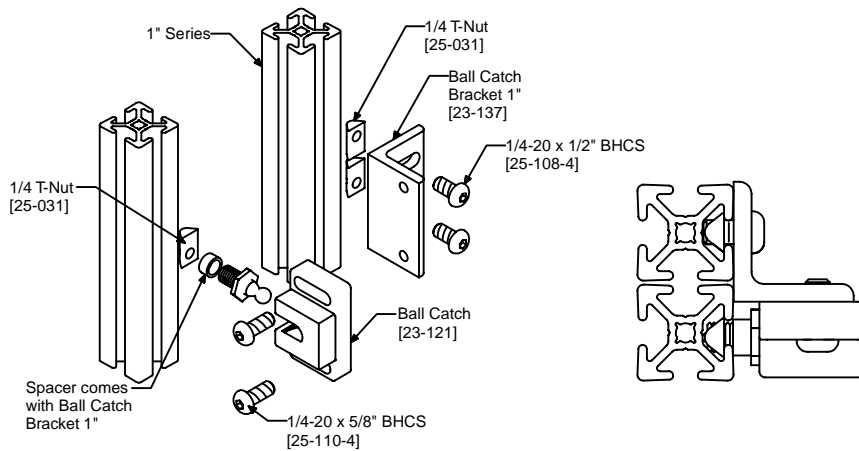
Housing: Glass-filled Nylon, Black
Ball Screw: St, Zinc Plated
Bracket: Al, Anodized

Recommended Fastening Hardware (Order Separately)

- Ball Catch to Extrusion (no bracket)
 - Screws (2) 1/4-20 x 3/4" BHCS [25-112-4]
 - T-Nuts (3) 1/4-20 [25-001, 20-083, 20-193]
 - Ball Catch with Style 1 Bracket to Extrusion
 - Screws (2) 5/16-18 x 5/8" BHCS [25-110-5] and (2) 1/4-20 x 5/8" BHCS [25-110-4]
 - T-Nuts (2) 5/16-18 [25-002, 25-082, 20-182] or double T-nut [25-042] and (1) 1/4-20 [25-001, 20-083, 20-193]
 - Ball Catch with Style 2 Bracket to Extrusion
 - Screws (2) 1/4-20 x 5/8" BHCS [25-110-4] and (2) 1/4-20 x 5/8" FHCS [25-210-4]
 - T-Nuts* (3) 1/4-20 [25-001, 20-083, 20-193]
- *You might also be able to use a double T-nut [25-048, 25-032] for mounting to extrusion

Ordering Information

	Unit	Weight	Part #
Ball Catch	Each	0.05 lb	23-121
Ball Catch Bracket 1.5" Style 1	Each	0.09 lb	21-120
Ball Catch Bracket 1.5" Style 2	Each	0.09 lb	21-127



Application

Bracket for using the standard ball catch with a 1" profile. Also includes spacer to allow ball catch to be used in 1" Series profile.

Recommended Fastening Hardware (Order Separately)

- Screws (2) 1/4-20 x 1/2" BHCS [25-110-4] and
 (2) 1/4-20 x 1/2" BHCS [25-108-4]
 T-Nuts (3) 1/4 T-Nuts [25-031, 25-034 or 25-036]

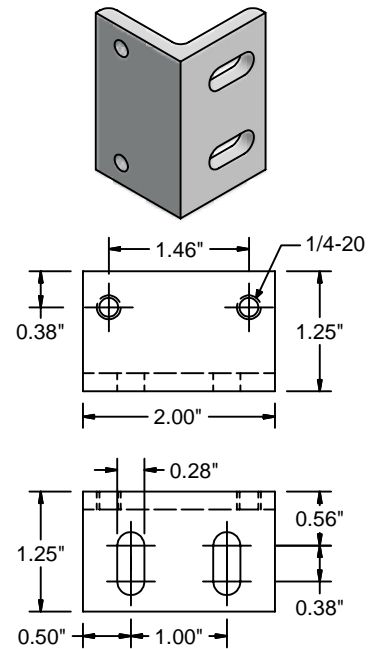
Ordering Information

Ball Catch Bracket 1"

Technical Data

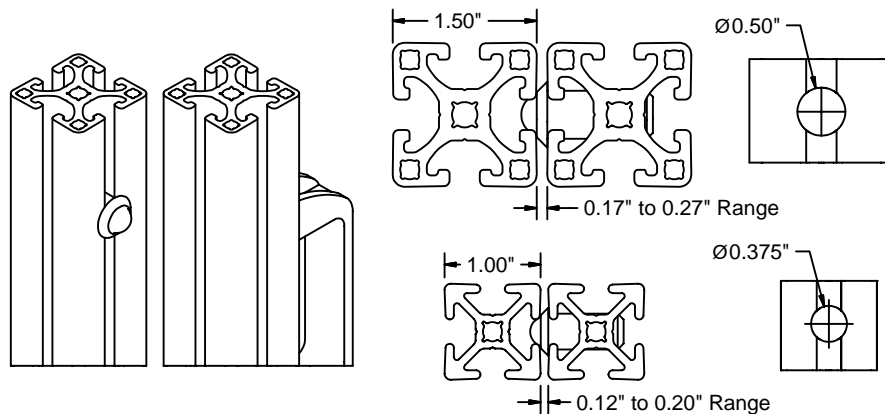
Aluminum, Clear Anodized

Ball Catch (cont.)



23-137

Handles, Hinges
& Switches



Application

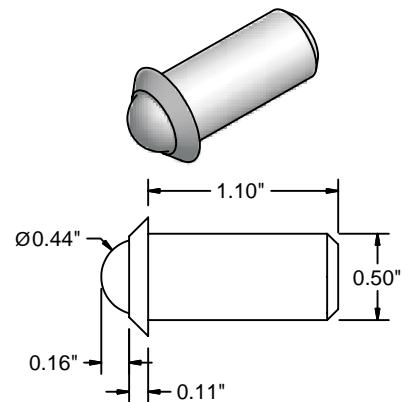
Ball plungers are an economical solution to hold swinging doors closed. The ball plunger presses easily into a machined hole in the extrusion, and the force of the ball in combination with a T-slot on the door frame holds the door closed.

Ordering Information

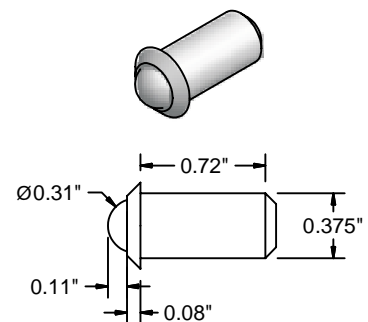
- Ball Plunger, 1/2" Dia. x 1.10" (for 1.5" Series)
 Ball Plunger, 3/8" Dia. x 0.786" (for 1" Series)

Technical Data

Housing: Steel
 Ball: Nylon

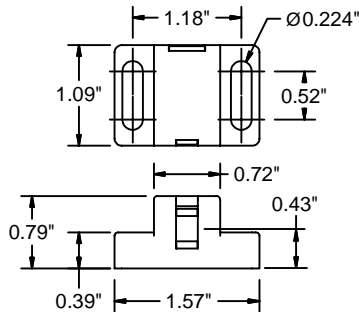
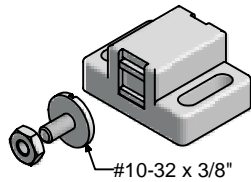


23-129

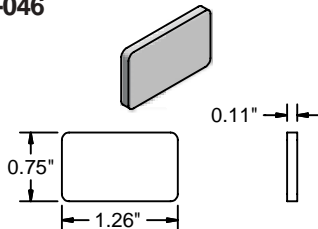


23-128

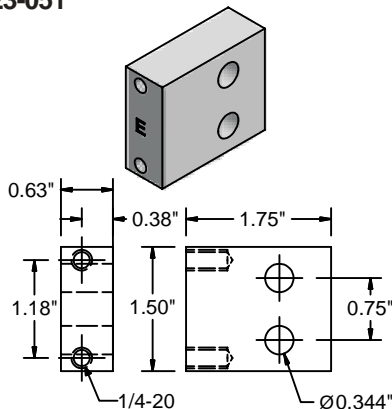
Magnetic Catches



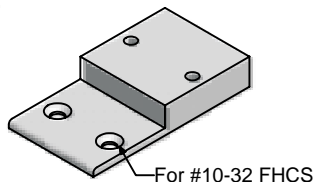
23-046



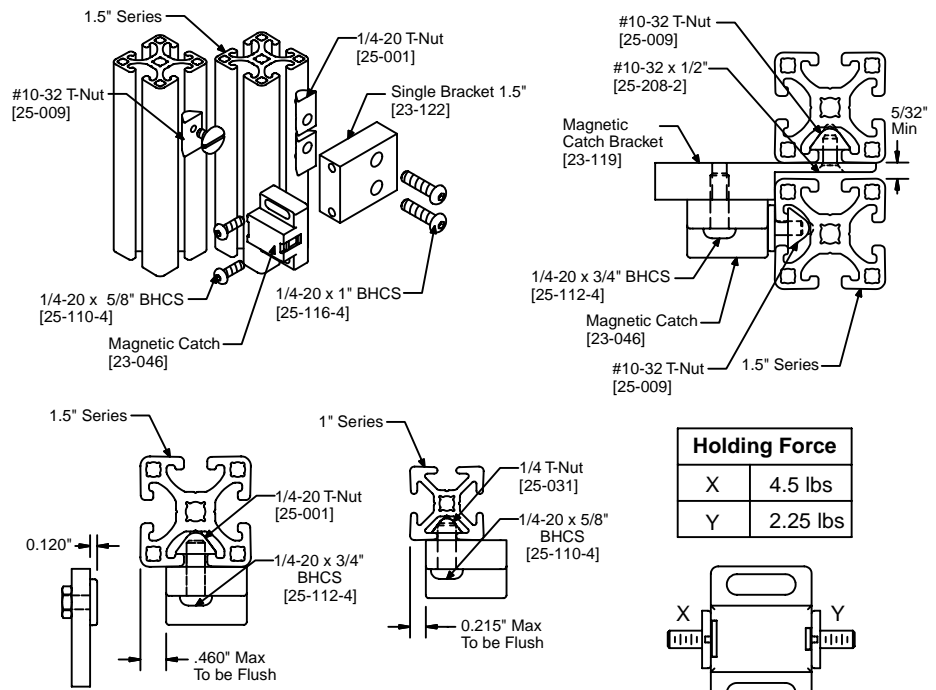
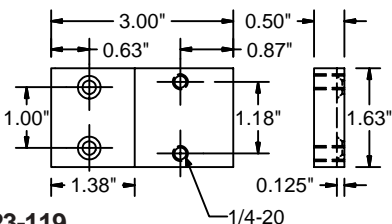
23-051



23-122



23-119



Application

Quick catch for swinging or sliding doors. For different holding strengths, rotate catch 180°. Adjust mounting position using slotted holes and appropriate mounting bracket if needed. Complete with pan head screw, or add optional plate for smooth mounting.

Technical Data

Magnetic Catch:

Glass filled Nylon, Black with pan head screw and hexagon nut

Strike Plate:

St, Zinc Plated with pressure sensitive adhesive

Mounting Bracket:

Aluminum, Clear Anodized

Recommended Fastening Hardware* (Order Separately)

Magnetic Catch to Extrusion (no bracket)

1.5" Series	Screws	1/4-20 x 3/4" BHCS [25-112-4]
	T-Nuts	(2) 1/4-20 T-nuts (25-001, 20-083, 20-193)
1" Series	Screws	1/4-20 x 5/8" BHCS [25-110-4]
	T-Nuts	(2) 1/4-20 [25-031, 25-034, 25-036]

Magnetic Catch with Single Bracket 1.5"

1.5" Series	Screws	(2) 1/4-20 x 5/8" BHCS [25-110-4] and (2) 1/4-20 x 1" BHCS [25-116-4]
	T-Nuts	(2) 1/4-20 [25-001, 20-083, 20-193]

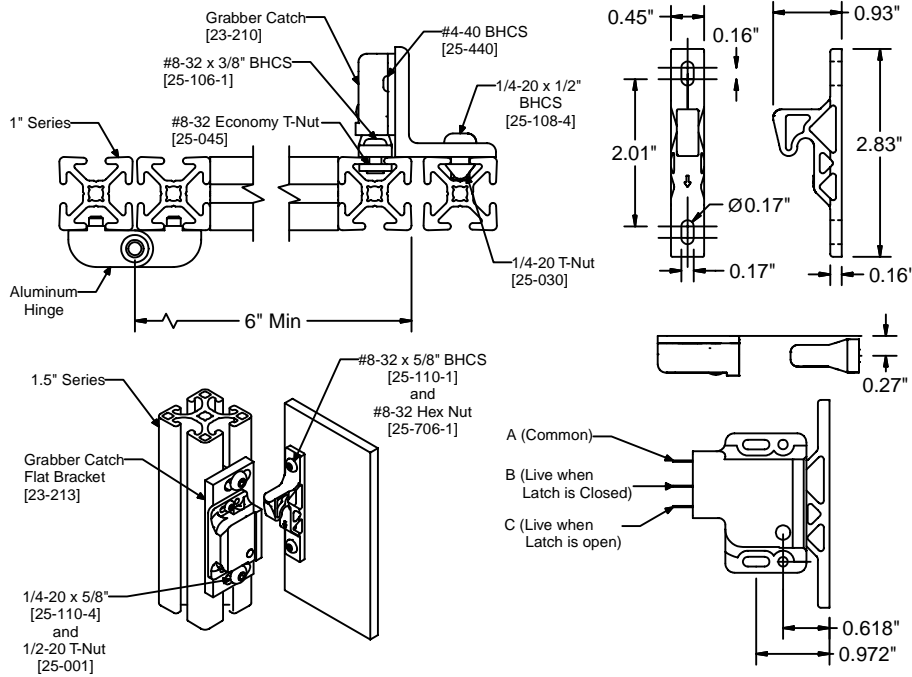
Magnetic Catch with Magnetic Catch Bracket

1.5" Series	Screws	(2) 1/4-20 x 3/4" BHCS [25-112-4] and (2) #10-32 x 1/2" FHCS [25-208-2]
	T-Nuts	(2) #10-32 [25-009, 20-088]

*Fastening sets may need #10-32 T-nut for Pan head screw when mounting to extrusion.

Ordering Information

	Unit	Weight	Part #
Magnetic Catch	Each	0.08 lb	23-046
Strike Plate	Each	0.02 lb	23-051
Single Bracket 1.5"	Each	0.13 lb	23-122
Magnetic Catch Bracket	Each	0.13 lb	23-119



Application

Push to close, pull to open door catch for mounting inside of enclosures. Catch with micro-switch is designed to operate a warning system and is not to be used as a safety switch.

Technical Data

Catch

Nylon, Black

Approximate pull-up force:

23-210	10 lbs
23-211	5 lbs

Bracket

Aluminum, Clear Anodized

Recommended Fastening Hardware for Catch

(2) #4-40 Screws [25-440] to attach catch to bracket are included. Fasteners apply to both brackets.

Hook

Order correct length #8-32 screw and appropriate nut to attach hook to either profile or panel.

Recommended Fastening Hardware for Bracket (Order Separately)

1.5" Series

Screws 1/4-20 x 5/8" [25-110-4]

T-Nuts Any 1.5" Series 1/4 [25-001, 25-083, 25-193]

1" Series

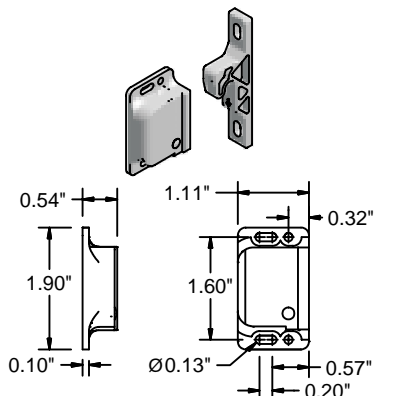
Screws 1/4-20 x 1/2" [25-108-4]

T-Nuts Any 1" Series 1/4 [25-031, 25-034, 25-036]

Ordering Information

	Unit	Weight	Part #
Grabber Door Catch	Each	0.04 lb	23-210
Grabber Catch w/Micro-Switch	Each	0.05 lb	23-211
Grabber Catch Bracket - 90°	Each	0.03 lb	23-212
Grabber Catch Bracket - Flat	Each	0.02 lb	23-213

Grabber™ Catch



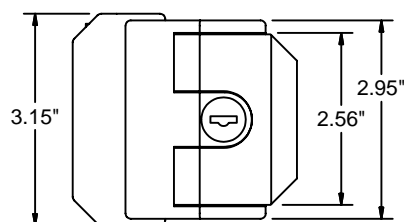
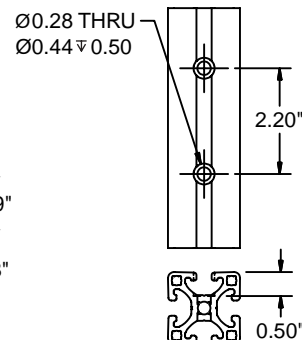
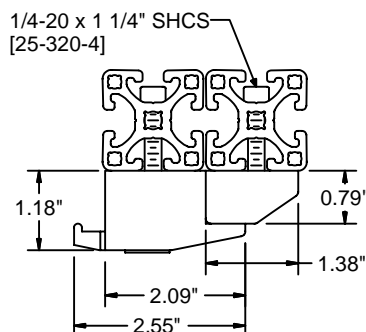
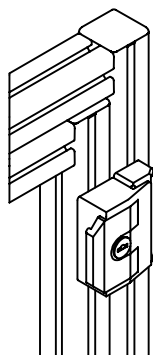
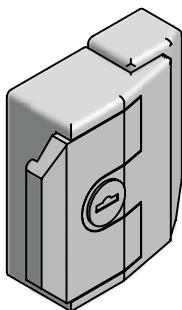
23-210

23-211

23-212

23-213

Slam Latch



23-155
23-156

Application

High strength latch designed to securely close door to the frame. An optional key locking version is available for extra security.

Technical Data

Die-Cast Zinc, Black

Recommended Fastening Hardware (Order Separately)

Screws 1/4-20 x 1 1/4" [25-320-4]

Ordering Information

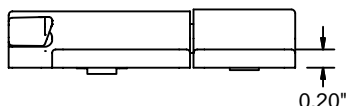
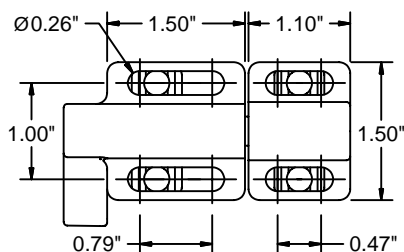
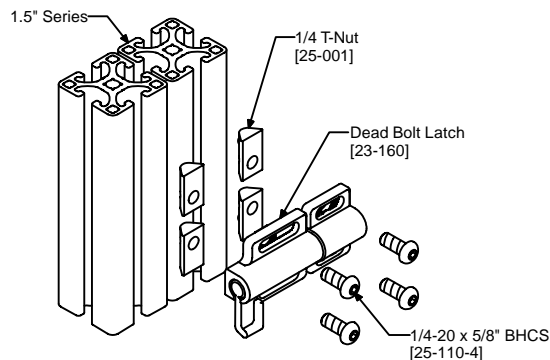
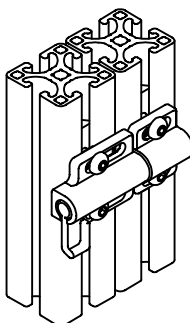
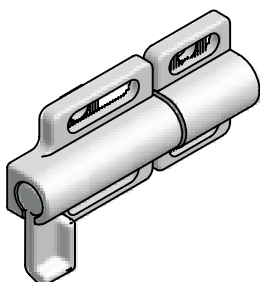
Slam Latch - Locking*

Slam Latch - Non-Locking

Unit	Weight	Part #
Each	1.25 lb	23-155
Each	1.25 lb	23-156

*All locks come keyed alike; special keying options available as special order.

Deadbolt



23-160

Application

Designed to secure doors using a spring loaded latch mechanism. Combine this with a door stop for a great latching solution.

Technical Data

Die-Cast Zinc, Clear

Recommended Fastening Hardware (Order Separately)

1 1/2" Series

Screws 1/4-20 x 5/8" BHCS [25-110-4]

T-Nuts Any 1 1/2" Series 1/4 [25-001, 20-083, 20-193]

1" Series

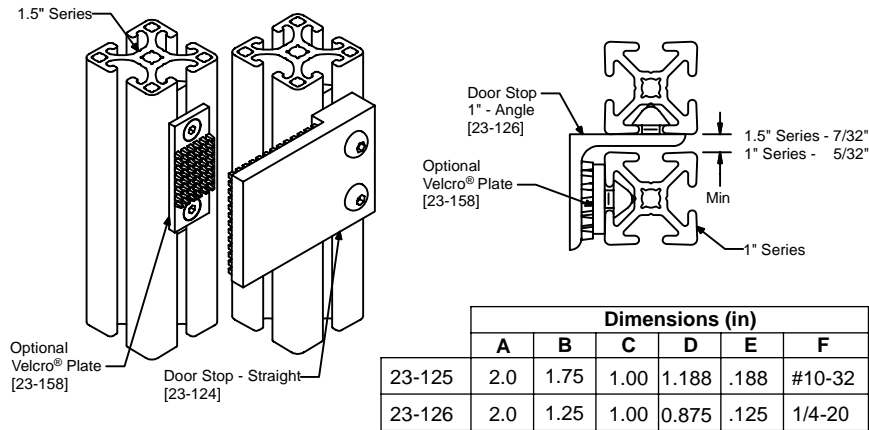
Screws 1/4-20 x 1/2" BHCS [25-108-4]

T-Nuts Any 1" Series 1/4 [25-031, 25-034, 25-036]

Ordering Information

Dead Bolt Latch

Unit	Weight	Part #
Each	0.2 lb	23-160



Dimensions (in)						
	A	B	C	D	E	F
23-125	2.0	1.75	1.00	1.188	.188	#10-32
23-126	2.0	1.25	1.00	0.875	.125	1/4-20

Application



Door stops provide a positive stop to keep the door lined up with the frame. An optional Velcro® plate can be added to create a catch to keep the door closed.

Technical Data

Aluminum, Clear Anodized with Velcro® Pad

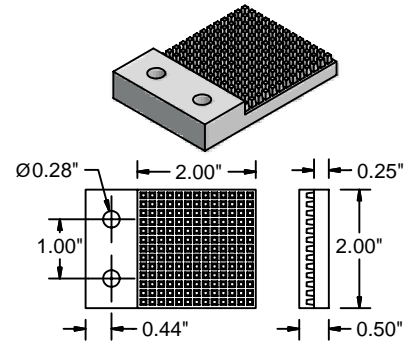
Recommended Fastening Hardware (Order Separately)

		23-124	23-125/23-126	23-158
1.5" Series	Screws	1/4-20 x 7/8 BHCS [25-114-4]	1/4-20 x 5/8 FHCS [25-210-4]	#10-32 x 1/2 FHCS [25-208-2]
	T-Nuts	25-001 or 20-083	25-001 or 20-083	25-009 or 20-088
1" Series	Screws	1/4-20 x 3/4 BHCS [25-112-4]	#10-32 x 3/8 FHCS [25-206-2]	#10-32 x 3/8 FHCS [25-206-2]
	T-Nuts	25-031 or 25-034	25-030 or 25-035	25-030 or 25-035

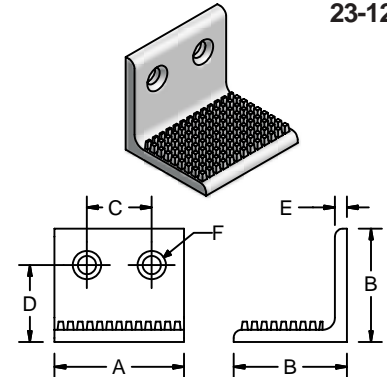
Ordering Information

	Unit	Weight	Part #
Door Stop - Straight	Each	0.2 lb	23-124
Door Stop 1.5" - Angle	Each	0.2 lb	23-125
Door Stop 1" - Angle	Each	0.1 lb	23-126
Velcro® Plate	Each	0.02 lb	23-158

Door Stops

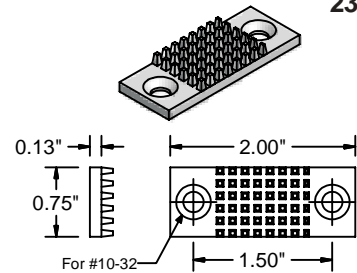


23-124



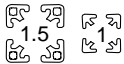
23-125

23-126



23-158

Application



Used to lock overlapping sliding panels up to 1/4" thick. Particularly suitable for display cases when used with sliding door guide profiles.

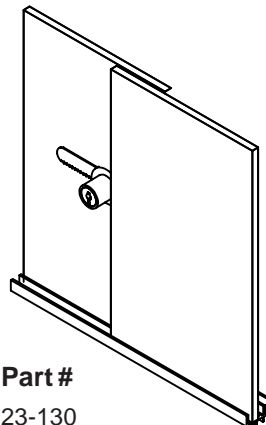
Technical Data

Steel, Nickel Plated
Includes two Keys

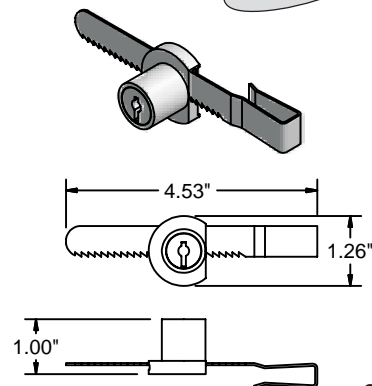
Minimum Panel Overlap = 1"

Ordering Information

	Unit	Weight	Part #
Ratchet Lock	Each	0.2 lb	23-130



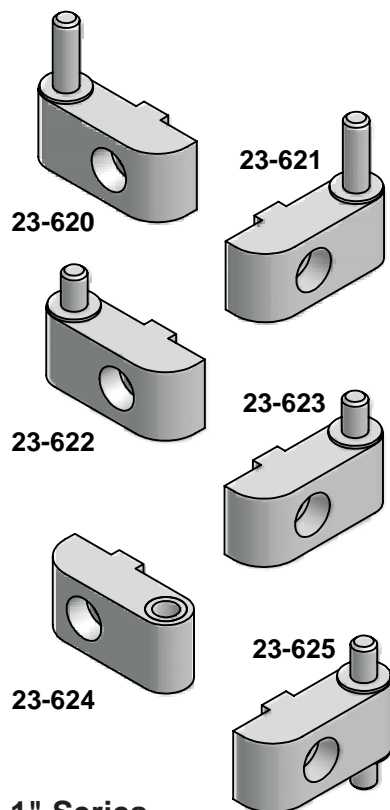
Ratchet Lock



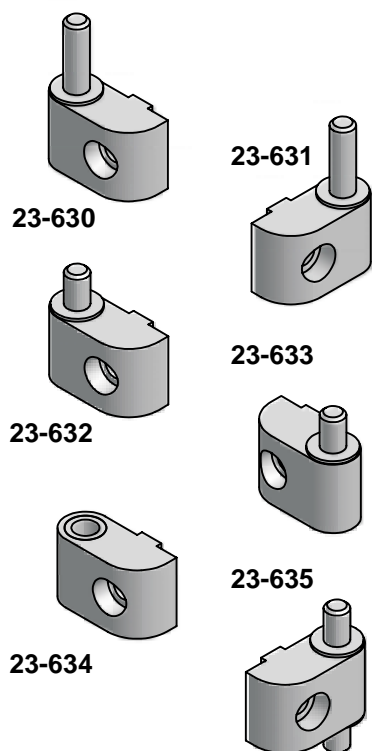
23-130

Aluminum Hinges

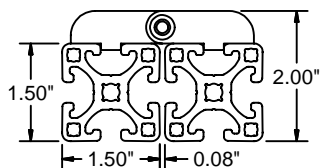
1.5" Series



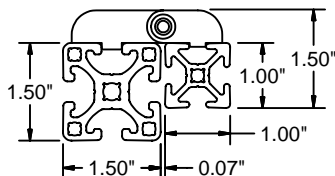
1" Series



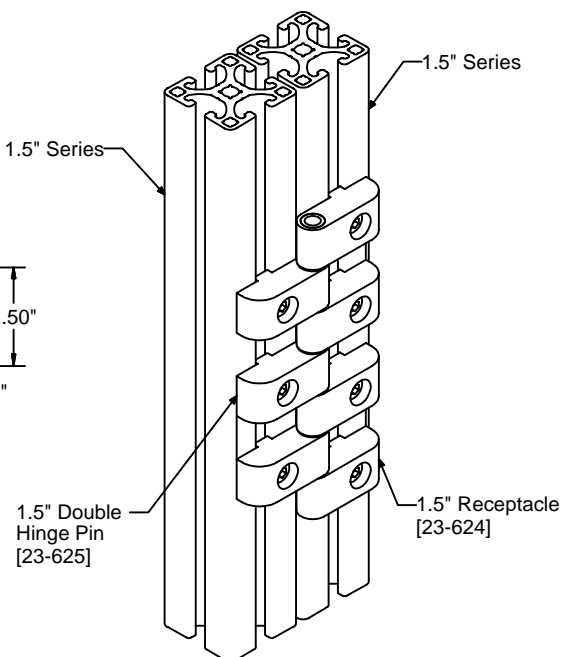
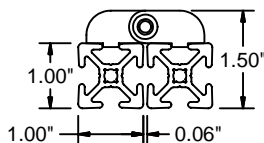
1.5" to 1.5" Series



1.5" to 1" Series



1" to 1" Series



Application

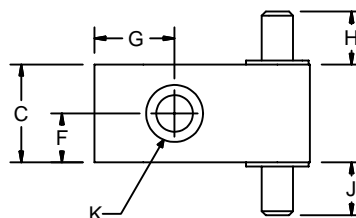
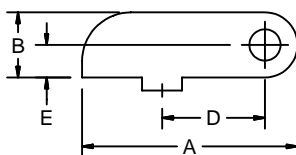


Any style of hinge can be made by combining individual hinge halves. You can create an extremely heavy duty hinge by combining 7 halves to create one hinge.

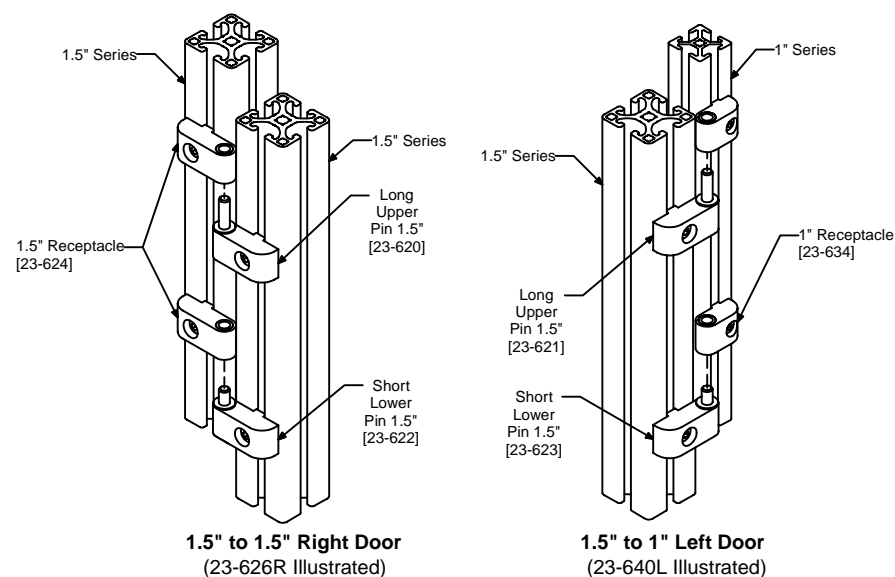
Technical Data

Body - Aluminum, Clear Anodized
Pin - Stainless Steel
Receptical - Self-Lubricating Bronze
Bushing
Washer - Nylon

Dimenisons



Part #	Dimensions (in)										Weight (lb)
	A	B	C	D	E	F	G	H	J	K	
23-620	1.655	.500	.750	.790	.250	.375	.615	.78	—	1/4-20	0.09
23-621								—	.78	1/4-20	0.08
23-622								.41	—	1/4-20	0.08
23-623								—	.41	1/4-20	0.08
23-624								—	—	1/4-20	0.07
23-625								.41	.41	1/4-20	0.09
23-630	1.156	.500	.750	.530	.250	.375	.375	.78	—	#10-32	0.06
23-631								—	.78	#10-32	0.06
23-632								.41	—	#10-32	0.06
23-633								—	.41	#10-32	0.06
23-634								—	—	#10-32	0.05
23-635								.41	.41	#10-32	0.06



Part #	23-620	23-621	23-622	23-623	23-624	23-625	23-630	23-631	23-632	23-633	23-634	23-635
23-626L		1		1	2							
23-626					2	1						
23-626R	1		1		2							
23-640L		1		1							2	
23-640						1					2	
23-640R	1		1								2	
23-636L								1		1	2	
23-636											2	1
23-636R							1		1		2	

Recommended Fastening Hardware (Order Separately)**1.5" Series**

Screws 1/4-20 x 5/8" [25-110-4]

T-Nuts Any 1.5" Series 1/4 [25-001, 20-083, 20-193]

1" Series

Screws #10-32 x 1/2" [25-108-2]

T-Nuts Any 1" Series #10-32 [25-031, 25-033, 25-035]

Ordering Information

Aluminum Lift-off Hinge 1.5" - Left

Aluminum Lift-off Hinge 1.5" - Fixed

Aluminum Lift-off Hinge 1.5" - Right

Aluminum Lift-off Hinge 1.5" to 1" - Left

Aluminum Lift-off Hinge 1.5" to 1" - Fixed

Aluminum Lift-off Hinge 1.5" to 1" - Right

Aluminum Lift-off Hinge 1" - Left

Aluminum Lift-off Hinge 1" - Fixed

Aluminum Lift-off Hinge 1" - Right

Unit

Pair

Each

Pair

Pair

Each

Pair

Pair

Each

Pair

Part #

23-626L

23-626

23-626R

23-640L

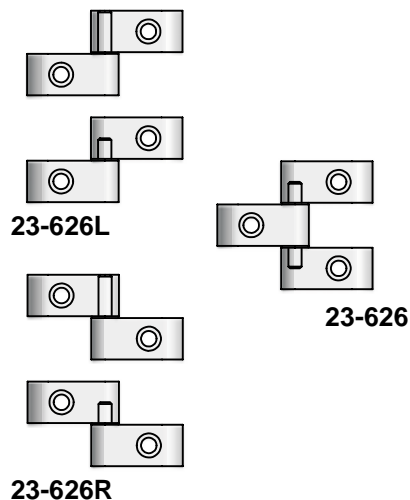
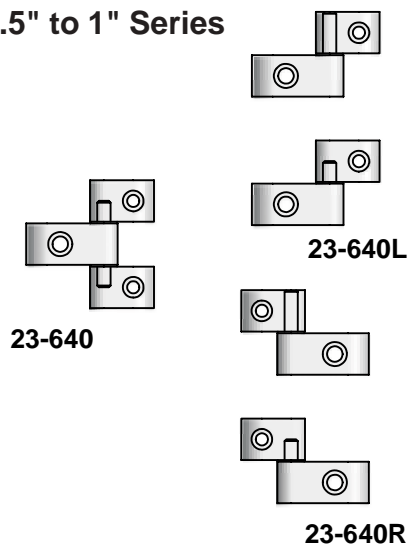
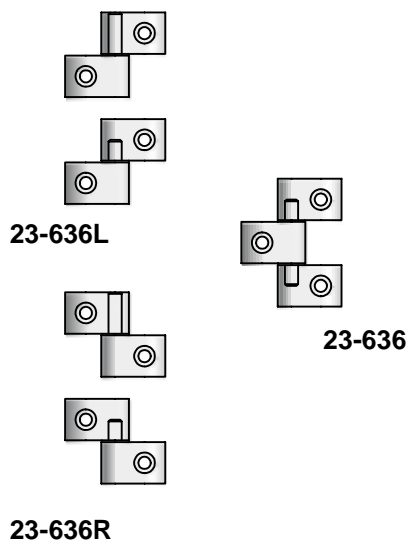
23-640

23-640R

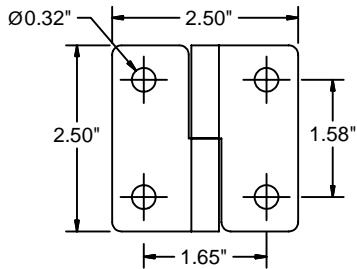
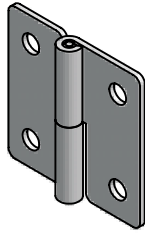
23-636L

23-636

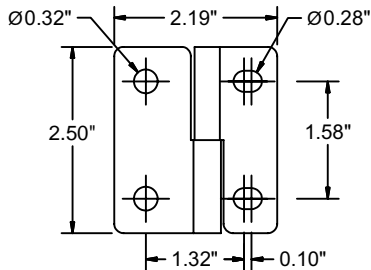
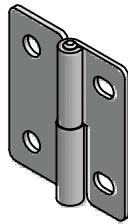
23-636R

Aluminum Hinges**1.5" Series****1.5" to 1" Series****1" Series**

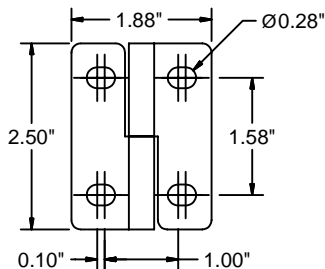
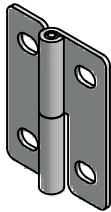
Steel



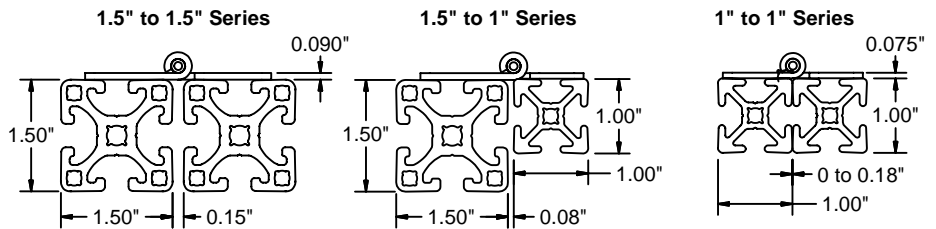
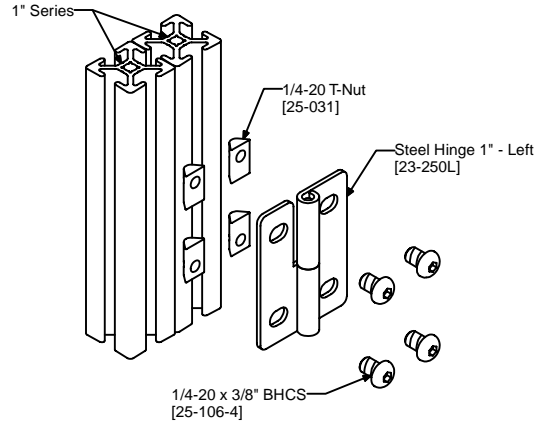
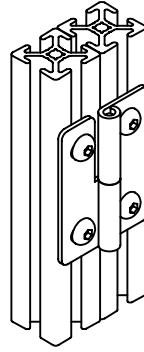
23-252



23-251



23-250



Application

Steel hinges for constructing guard/enclosure doors. Lift off option allows access into enclosure. Specify a left hand or right hand lift-off hinge set depending on required direction of door opening.

Technical Data

Steel, Black Zinc Plated

Recommended Fastening Hardware (Order Separately)

1.5" Series

Screws 1/4-20 x 1/2" BHCS [25-108-4]

T-Nuts Any 1.5" Series 1/4-20 [25-001, 20-083, 20-193]

1" Series

Screws 1/4-20 x 3/8" BHCS [25-106-4]

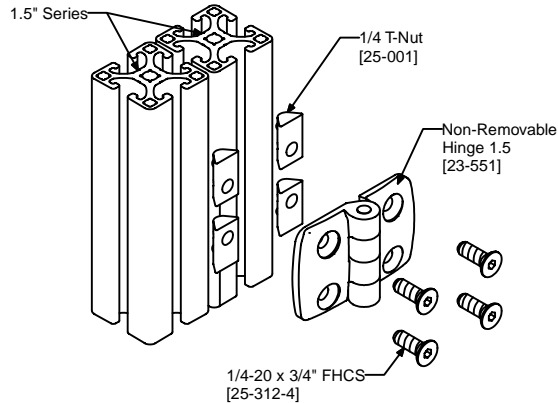
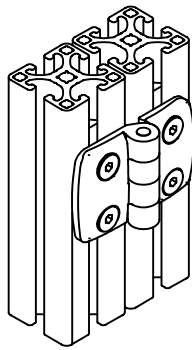
T-Nuts Any 1" Series 1/4-20 [25-031, 25-034, 25-036]

Ordering Information

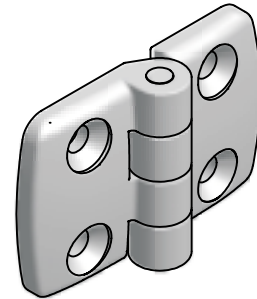
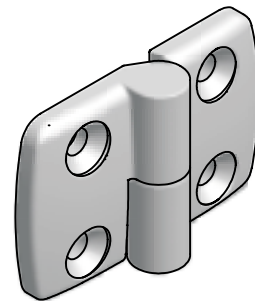
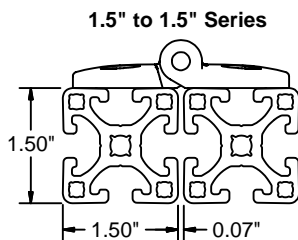
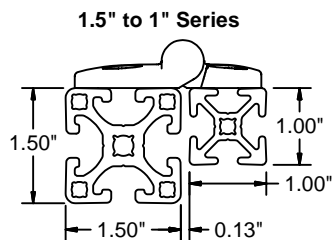
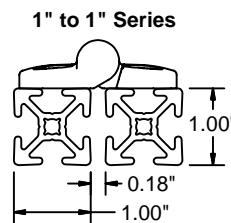
Steel Hinge 1.5" - Left
Steel Hinge 1.5" - Fixed
Steel Hinge 1.5" - Right
Steel Hinge 1" to 1.5" - Left
Steel Hinge 1" to 1.5" - Fixed
Steel Hinge 1" to 1.5" - Right
Steel Hinge 1" - Left
Steel Hinge 1" - Fixed
Steel Hinge 1" - Right

Unit*	Weight	Part #
Pair	0.4 lb	23-252L
Pair	0.4 lb	23-252
Pair	0.4 lb	23-252R
Pair	0.3 lb	23-251L
Pair	0.3 lb	23-251
Pair	0.3 lb	23-251R
Pair	0.28 lb	23-250L
Pair	0.28 lb	23-250
Pair	0.28 lb	23-250R

*Pair consists of two complete hinges.



Medium Duty Plastic

**NON-REMOVABLE****LIFT OFF****1.5" to 1.5" Series****1.5" to 1" Series****1" to 1" Series**

Application

High quality plastic hinges for constructing medium duty guard/ enclosure doors. Hinges are offered in two types: *lift off* (for left and right hand doors) and *non-removable*.

Technical Data

Glass-Filled Nylon, Black
with stainless steel pin
Max. Torque: 74 ft-lbs

Recommended Fastening Hardware (Order Separately)

1.5" Series

Screws 1/4-20 x 3/4" FHCS [25-212-4]

T-Nuts Any 1.5" Series 1/4-20 [25-001, 20-083, 20-193]

1" Series

Screws 1/4-20 x 1/2" FHCS [25-208-4]

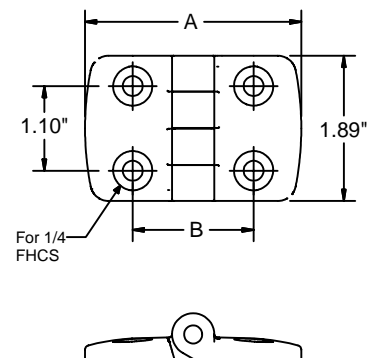
T-Nuts Any 1" Series 1/4-20 [25-031, 25-034, 25-036]

Part #	Dimensions (in)	
	A	B
23-551L 23-551 23-551R	2.74	1.57
23-552L 23-552 23-552R	2.28	1.38
23-550L 23-550 23-550R	1.93	1.18

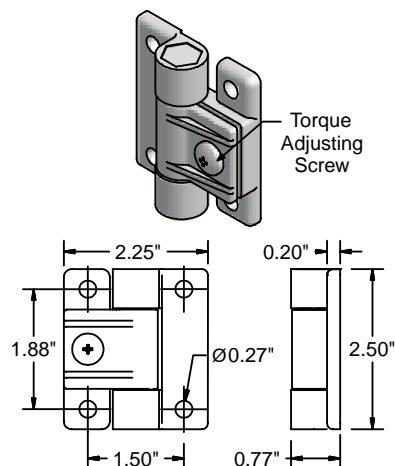
Ordering Information

Plastic Hinge 1.5" - Left
Plastic Hinge 1.5"
Plastic Hinge 1.5" - Right
Plastic Hinge 1" to 1.5" - Left
Plastic Hinge 1" to 1.5"
Plastic Hinge 1" to 1.5" - Right
Plastic Hinge 1" - Left
Plastic Hinge 1"
Plastic Hinge 1" - Right

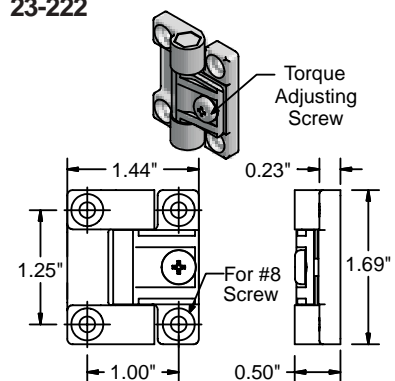
Unit	Weight	Part #
Each	0.99 oz	23-551L
Each	0.99 oz	23-551
Each	0.99 oz	23-551R
Each	1.23 oz	23-552L
Each	1.23 oz	23-552
Each	1.23 oz	23-552R
Each	1.52 oz	23-550L
Each	1.52 oz	23-550
Each	1.52 oz	23-550R



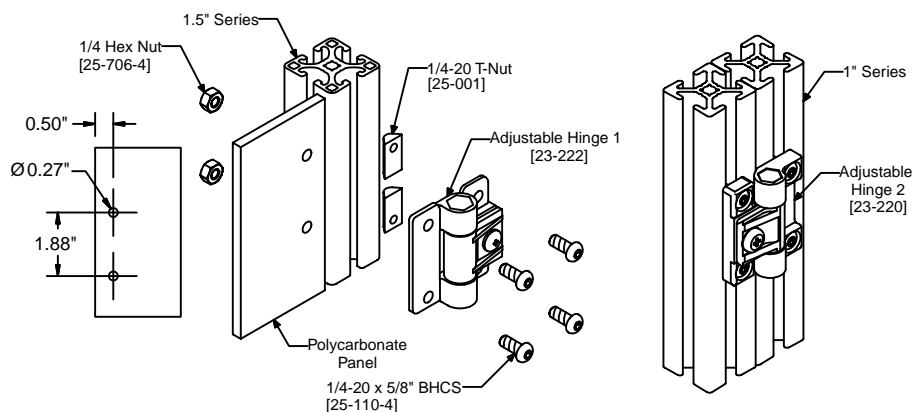
Adjustable



23-222



23-220



Application

Adjustable tension hinge for swinging doors to hold door open, partially open or closed. Can also adjust speed of opening or closing.

Technical Data

Acetal, Black
Polycarbonate hinge pin
Maximum Torque:
23-220 8 in-lbs
23-222 30 in-lbs

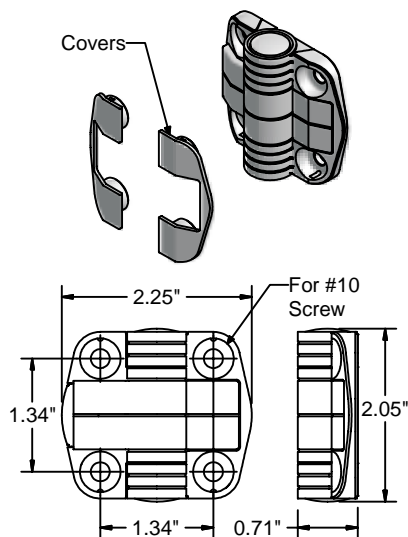
Recommended Fastening Hardware (Order Separately)

Series	Type	23-220	23-222
1.5" Series	Screws	—	1/4-20 x 5/8 BHCS [25-110-4]
	T-Nuts	—	1/4-20 [25-001, 20-083, 25-193]
1" Series	Screws	#8-32 x 3/8 BHCS [25-106-1]	—
	T-Nuts	#8-32 Economy [25-045]	—

Ordering Information

	Unit	Weight	Part #
Adjustable Hinge 1 (for 1.5" Series)	Each	1.5 oz	23-222
Adjustable Hinge 2 (for 1" Series)	Each	1.0 oz	23-220

Positioning



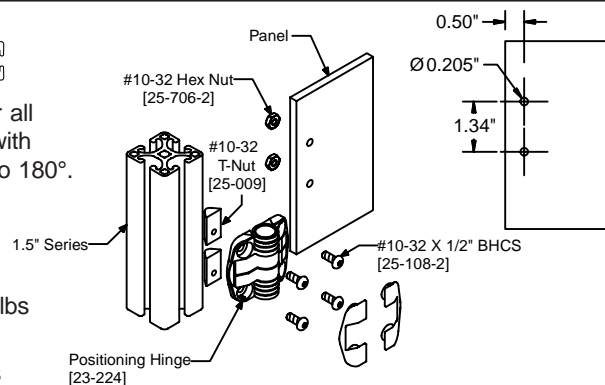
23-224

Application

Multiple position hinge for all swinging doors. Models with preset angles also open to 180°.

Technical Data

Acetal, Black
Positioning Torque 10 in-lbs
Maximum Load:
Radial 100 lbs
Axial 100 lbs



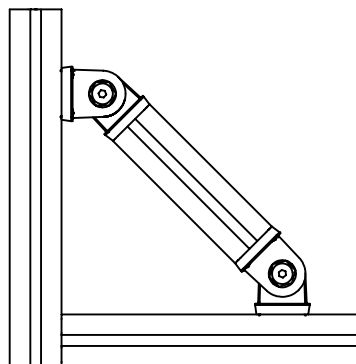
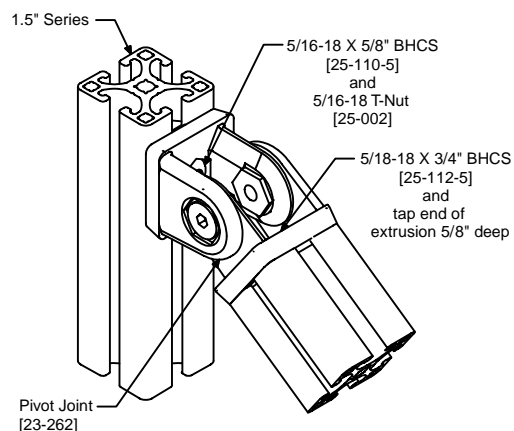
Recommended Fastening Hardware (Order Separately)

For attaching to profile

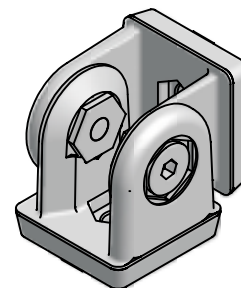
1.5" Series	Screws	#10-32 x 1/2" BHCS [25-108-2]
	T-Nuts	Any 1.5" Series #10-32 [25-009, 25-088]
1" Series	Screws	#10-32 x 3/8" BHCS [25-106-2]
	T-Nuts	Any 1" Series #10-32 [25-030, 25-033, 25-035]

Ordering Information

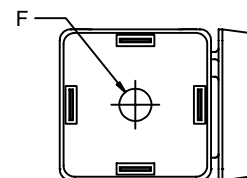
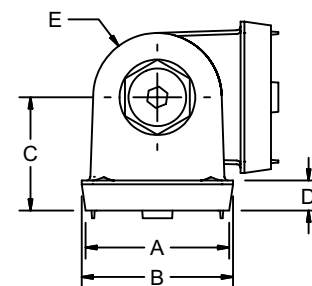
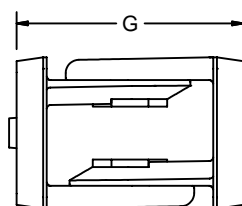
	Unit	Weight	Part #
Positioning Hinge 80°	Each	1.3 oz	23-224
Positioning Hinge 115°	Each	1.3 oz	23-226
Positioning Hinge 150°	Each	1.4 oz	23-228



Pivot Joint



	Dimensions (in)						
	A	B	C	D	ØE	ØF	G
23-262 23-263	1.5	1.57	1.18	0.16*	1.34	0.335	2.36
23-260 23-261	1.0	1.10	0.89	0.28	1.04	0.260	1.78



Application

For connecting profiles at various angles from 0° to 180°, eliminating the need for a miter cut. Die cast inserts provide alignment with the profile and prevent rotation when mounted to end or side of profile.

Technical Data

Zinc Die Casting

Recommended Fastening Hardware (Order Separately)

Attachment to T-Slot

1.5 inch Series

Screws 5/16-18 x 5/8 [25-110-5]

T-Nuts Any 1.5 inch Series 5/16 [25-002, 20-082, 20-182]

1 inch Series

Screws 1/4-20 x 1/2 [25-108-4]

T-Nuts Any 1 inch Series 1/4 [25-031, 25-034, 25-036]

Attachment to End of Profile

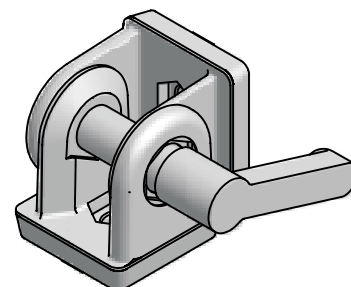
1.5 inch Series

Screws 5/16-18 x 3/4 [25-112-5]

1 inch Series

Screws 1/4-20 x 3/4 [25-112-4]

23-260
23-262



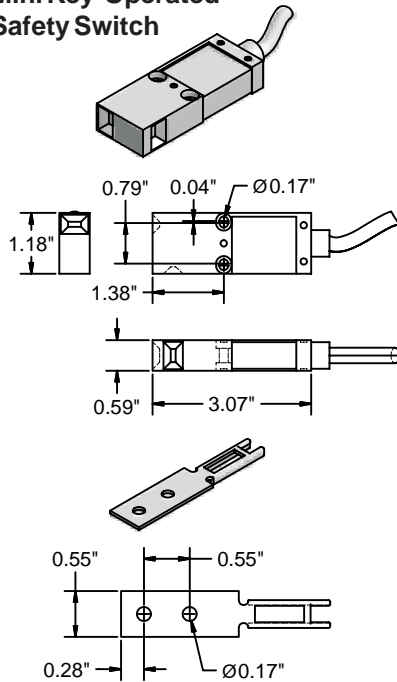
23-261
23-263

Ordering Information

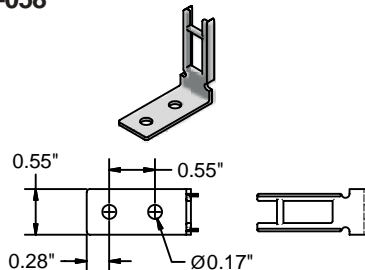
	Unit	Weight	Part #
Pivot Joint 1.5", Blk	Each	0.7 lb	23-262
Pivot Joint 1.5", Blk - Locking	Each	0.9 lb	23-263
Pivot Joint 1", Blk	Each	0.24 lb	23-260
Pivot Joint 1", Blk - Locking	Each	0.40 lb	23-261

Mini Key-Operated

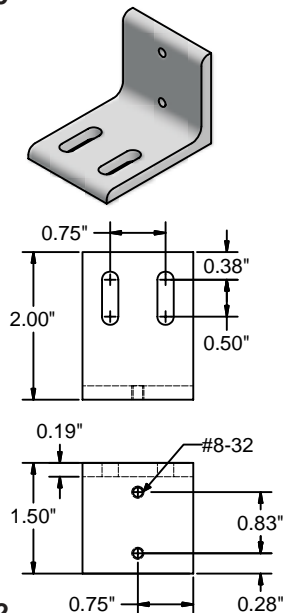
Mini Key-Operated Safety Switch



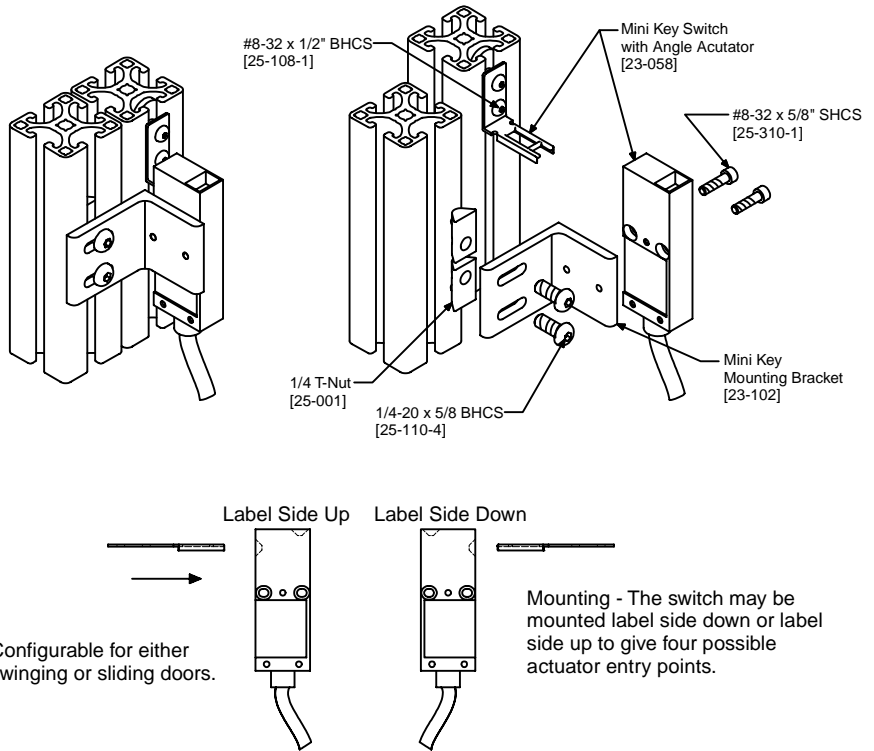
23-058



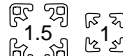
23-059



23-102



Application



This safety switch is a compact low-cost solution. The flexible mounting options allow a multitude of configurations, while still meeting NEMA 6 code. The size of the switch also allows for a small swing radius.

*Note - You can purchase an optional Flex Key to obtain a minimum swing radius of 2.76". Consult factory for details.

Technical Data

Case Material:
UL List Glass Filled Polyester
Actuator: Stainless Steel Roller
Contacts: 1 N/C + 1 N/O

Recommended Fastening Hardware (Order Separately)

Actuator

1.5" Series

Screws (2) #8-32 x 1/2" BHCS [25-108-1] &
(2) #8-32 x 5/8" SHCS [25-308-1]
T-Nut #8-32 Economy Offset [25-045]

1" Series

Screws (2) #8-32 x 3/8" BHCS [25-106-1] &
(2) #8-32 x 5/8" SHCS [25-308-1]
T-Nut #8-32 Economy Offset [25-039]

Mini-Key Bracket

1.5" Series

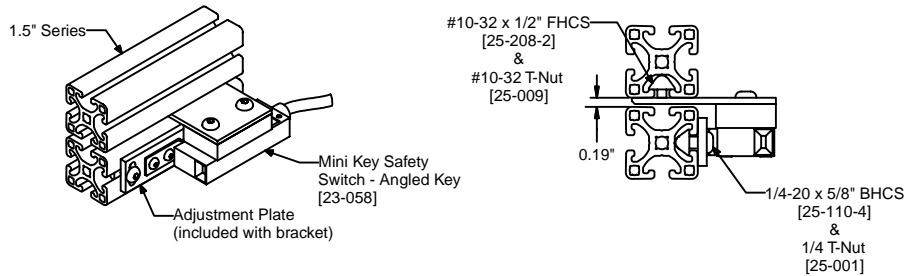
Screws 1/4-20 x 5/8" BHCS [25-110-4]
T-Nut Any 1.5" Series 1/4 [25-001, 20-083, 20-193]

Ordering Information

Mini Key Safety Switch - Straight Key
Mini Key Safety Switch - Angled Key
Mini Key Mounting Bracket

Unit	Weight	Part #
Each	5 oz	23-058
Each	5 oz	23-059
Each	3 oz	23-102

*Ships with 39.3" of cable attached.



Application



Mounting bracket for the Mini Key Switch where a panel will prevent the use of mounting T-slots. You must leave a 3/16" gap when using this bracket.

Technical Data

Aluminum, Clear Anodized

Recommended Fastening Hardware (Order Separately)

Actuator

Screws (2) #8-32 x 3/16" BHCS [25-103-1] & (2) #8-32 x 5/8" SHCS [25-308-1]
 T-Nut #8-32 Economy Offset [25-045]

Brackets

Screws (2) #10-32 x 1/2" FHCS [25-208-2] & (2) 1/4-20 x 5/8" BHCS [25-110-4]
 T-Nuts (2) #10-32 [25-009] & (2) 1/4 [25-001]

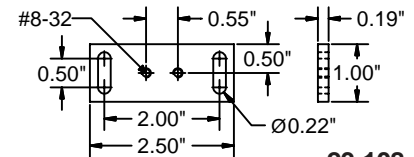
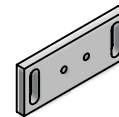
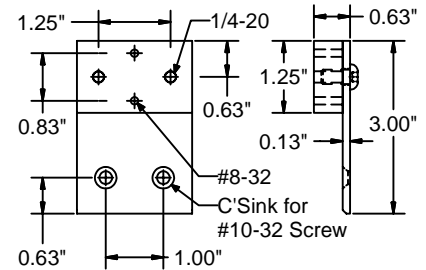
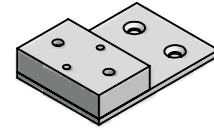
Ordering Information

Mini Key Mounting Bracket - Top

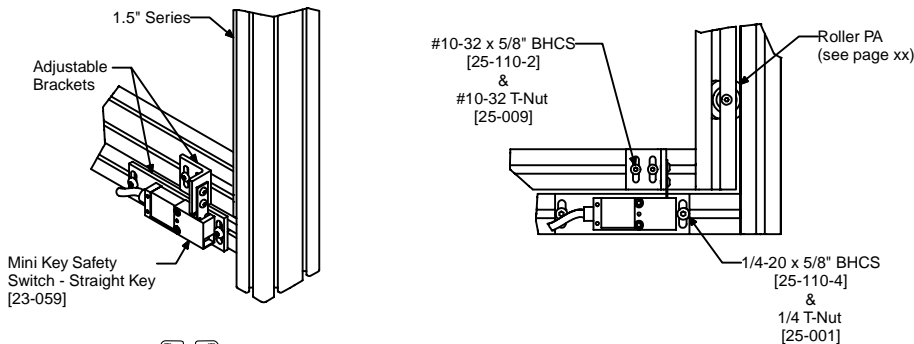
Unit	Weight	Part #
Each	2 oz	23-108

Mini Brackets

Swinging Door Top Mount Bracket



23-108



Application



Mounting bracket for the Mini Key Switch on vertical or horizontal sliding doors. The brackets are slotted to allow for a variety of adjustments.

Technical Data

Aluminum, Clear Anodized

Recommended Fastening Hardware (Order Separately)

Actuator

Screws (2) #8-32 x 3/16" BHCS [25-103-1] & (2) #8-32 x 5/8" SHCS [25-308-1]
 T-Nut #8-32 Economy Offset [25-045]

Brackets

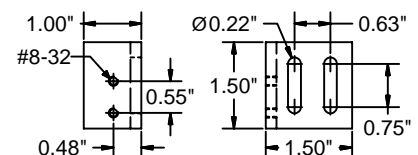
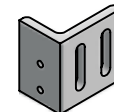
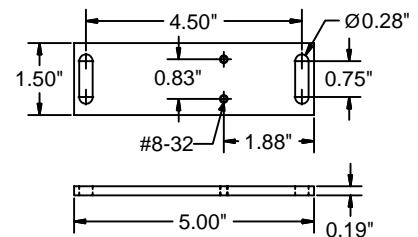
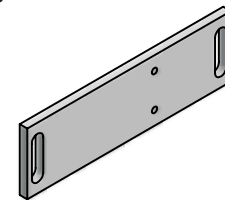
Screws (2) #10-32 x 1/2" FHCS [25-208-2] & (2) 1/4-20 x 5/8" BHCS [25-110-4]
 T-Nuts (2) #10-32 [25-009] & (2) 1/4 [25-001]

Ordering Information

Mini Key Mounting Bracket - Sliding

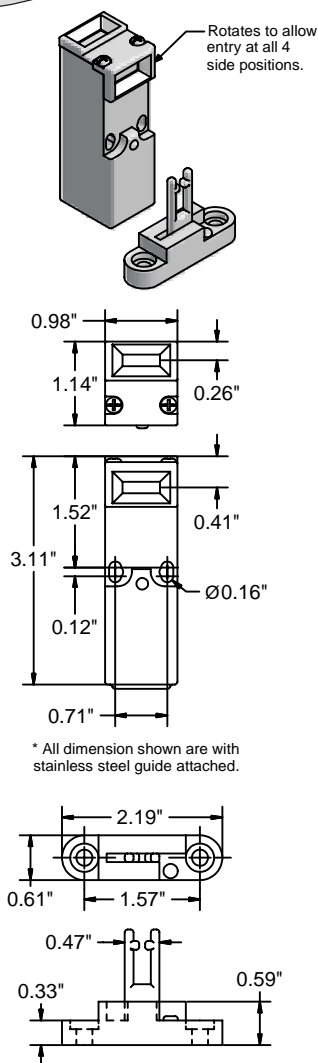
Unit	Weight	Part #
Each	1 oz	23-109

Sliding Vertical Door Bracket

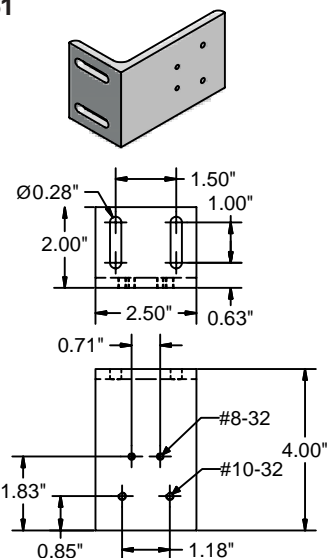


23-109

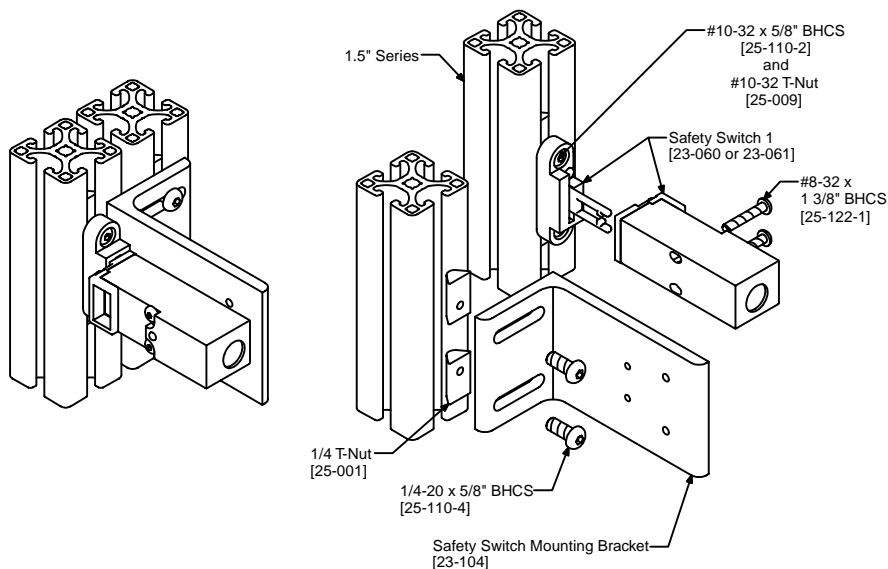
Switch 1



23-060
23-061



23-104



Application



This safety switch is a compact low cost solution. The rotatable head allows key entry from all positions while still meeting NEMA 6 code. The size of the switch also allows for a small swing radius.

Technical Data

Switching Ability

AC: 500V-1A, 250V-2A, 100V-5A
DC: 250V-0.5A, 24V-2A

Auxiliary Contacts:

1 N/O (1N/C + 1N/O switch only)

Max Switching Current/Volt/Amp
500 V/500 VA

Minimum Current: 5V 5mA DC

Protection: IP67 (NEMA 6)

Conforms to:

EN1088, EN292,
UL and C-UL Listed

Recommended Fastening Hardware (Order Separately)

Actuator

Screws (2) #10-32 x 5/8" BHCS [25-110-2] &
(2) #8-32 x 1 3/8" BHCS [25-122-1]
T-Nuts (2) Any 1.5" Series #10-32 [25-009]

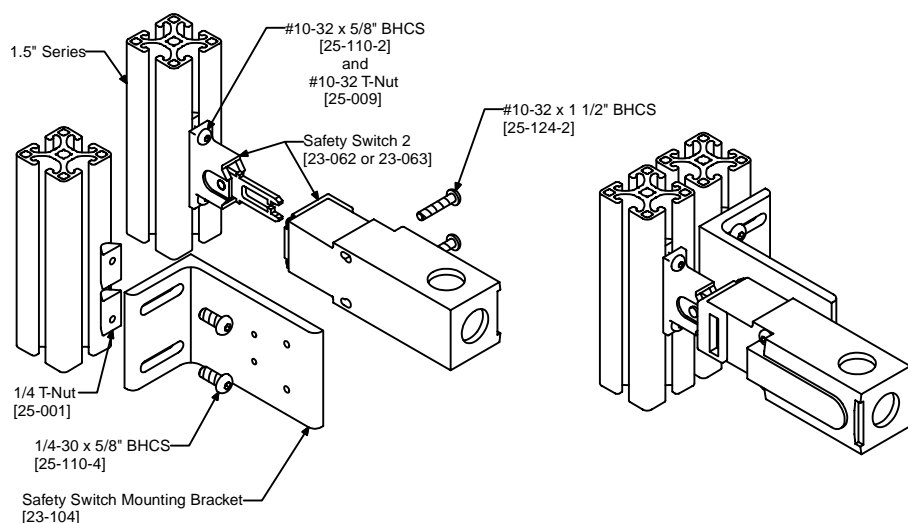
Bracket [23-104]

Screws 1/4-20 x 5/8" BHCS [25-110-4]
T-Nut Any 1.5" Series 1/4 [25-001, 20-083, 20-193]

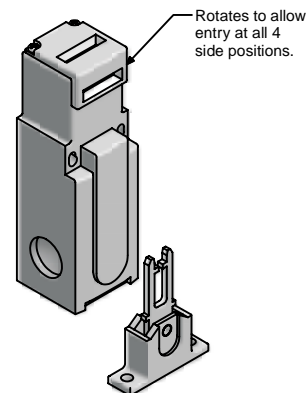
Ordering Information

Safety Switch 1 (1 N/C + 1 N/O)
Safety Switch 1 (2 N/C)
Safety Switch Mounting Bracket

Unit	Weight	Part #
Each	3.1 oz	23-060
Each	3.1 oz	23-061
Each	3.0 oz	23-104



Switch 2

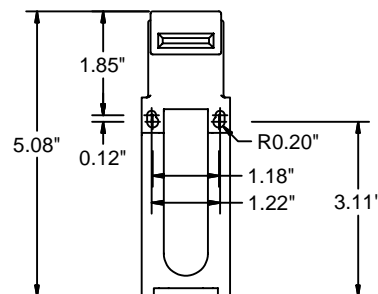
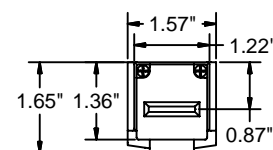


Application

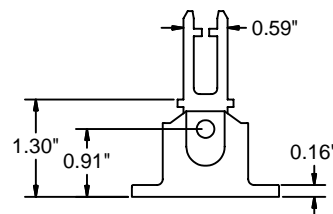
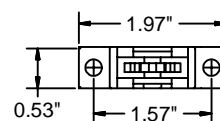
This safety switch is a strong yet compact and versatile solution. The rotatable head allows key entry from all positions while still meeting NEMA 6 code. This switch is designed for a minimum of two million actuations.

Technical Data

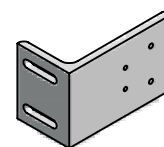
Switching Ability
 AC: 230V, 4A
 DC: 24V, 4A
 Auxiliary Contacts:
 1 N/O, 2N/C
 Max Switching Current/Volt/Amp
 12V at 10mA
 Minimum Current: 1mA at 24V
 Protection: IP67 (NEMA 6)
 Conforms to:
 EN1088, EN292,
 UL and C-UL Listed



* All dimensions shown are with stainless steel guide attached.



23-062
23-063



See previous page for
 bracket dimensions.

23-104

Recommended Fastening Hardware (Order Separately)

Actuator

- Screws (2) #10-32 x 5/8" BHCS [25-110-2] &
 (2) #10-32 x 1 1/2" BHCS [25-124-2]
- T-Nuts (2) Any 1.5" Series #10-32 [25-009]

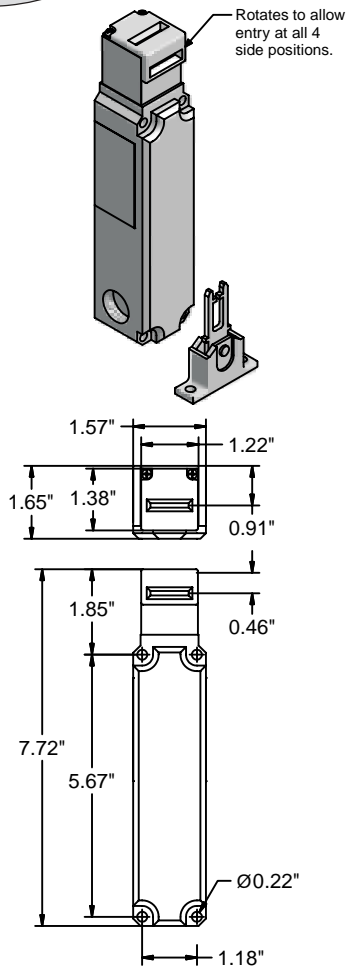
Bracket [23-104]

- Screws 1/4-20 x 5/8" BHCS [25-110-4]
- T-Nut Any 1.5" Series 1/4 [25-001, 20-083, 20-193]

Ordering Information

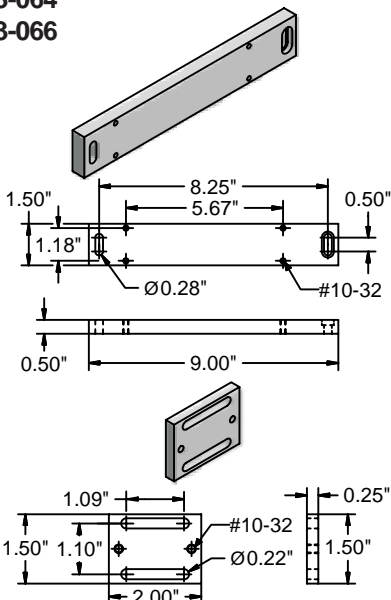
	Unit	Weight	Part #
Safety Switch 2 (1 N/C + 1 N/O)	Each	6 oz	23-062
Safety Switch 2 (2 N/C + 2 N/O)	Each	6 oz	23-063
Safety Switch Mounting Bracket	Each	3 oz	23-104

Switch 3

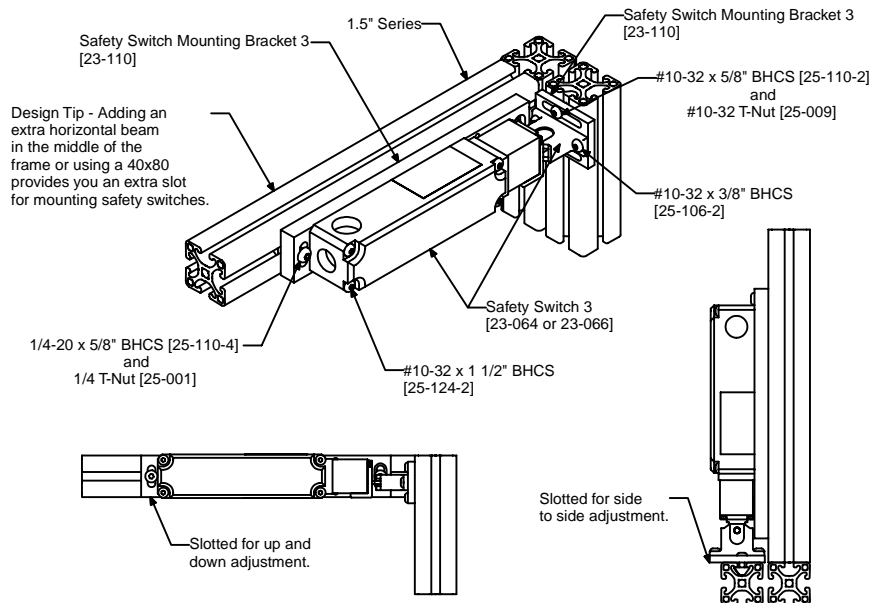


*Key dimensions same as 23-062/23-063 on previous page.

23-064
23-066



23-110



Application



This safety switch has a very high locking force yet is compact with a narrow profile. It has a rotatable head to allow key entry from all positions while still meeting NEMA 6 code.

Technical Data

Switching Ability
AC: 230V, 6A
DC: 24V, 6A
Auxiliary Contacts:
2 N/O
Solenoid Supply Voltage*:
110VAC
Minimum Current: 10mA at 24V
Protection: IP67 (NEMA 6)
Conforms to:
EN1088, EN292,
UL and C-UL Listed
*24VAC/DC available as special order.

Recommended Fastening Hardware (Order Separately)

Actuator

- Screws (2) #10-32 x 3/8" BHCS [25-106-2] & (2) #10-32 x 1 1/2" BHCS [25-124-2]
- T-Nuts (2) Any 1.5" Series #10-32 [25-009]

Bracket [23-110]

- Screws (2) 1/4-20 x 5/8" BHCS [25-110-4] & (2) #10-32 x 5/8" BHCS [25-110-2]
- T-Nuts (2) 1/4 T-nut [25-001] & (2) #10-32 T-nut [25-009]

Ordering Information

	Unit	Weight	Part #
Safety Switch 3 (2 N/C) Power to Lock	Each	18 oz	23-064
Safety Switch 3 (2 N/C) Power to Unlock	Each	18 oz	23-066
Safety Switch Mounting Bracket 3	Each	2 oz	23-110

Handles, Hinges
& Switches