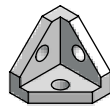
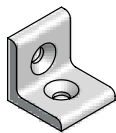
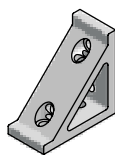
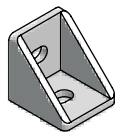
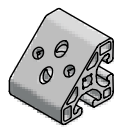
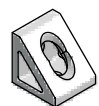
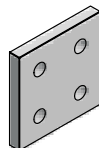
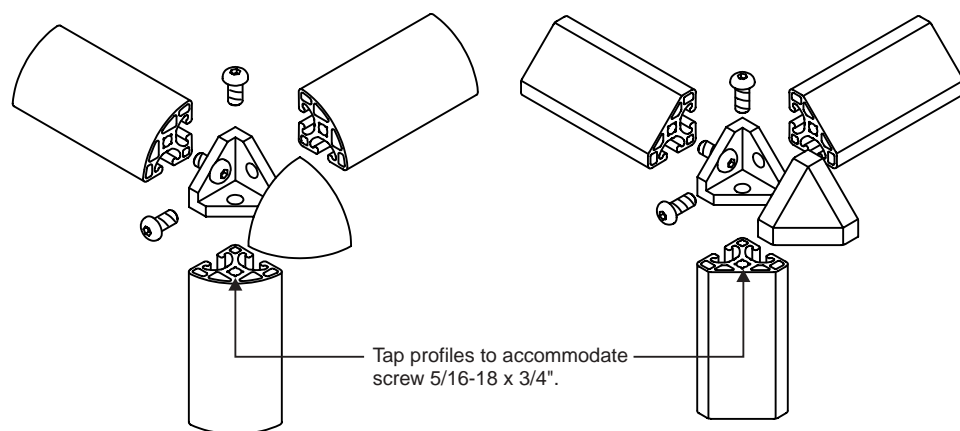


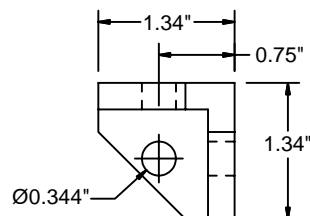
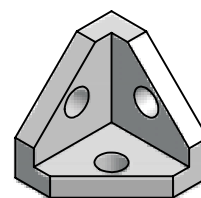
Section 3

Brackets, Gussets & Plates

Corner Brackets	41	
Angle Brackets - 1.5"	42	
Angle Brackets - 1"	43	
Machined Gussets	44	
Cast Gussets	45	
Corner Elements	46	
Machined Corner Elements	47	
Joining Plates - 1.5"	48-49	
Joining Plates - 1"	50-51	



Corner Bracket



22-153

Application

Corner brackets are used for connecting 1.5" Series profiles at right angles. Ideal solution for construction of display cases, tables, cover hoods, etc. Corner caps are designed to match the contour of the profile.

Technical Data

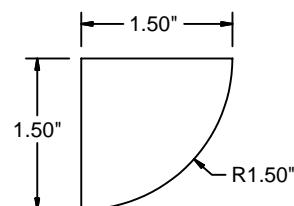
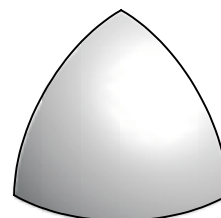
Bracket	Die Cast Zinc
End Cap	Glass-filled Nylon, Black

Recommended Fastening Hardware (Included)

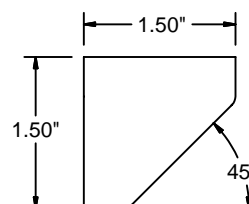
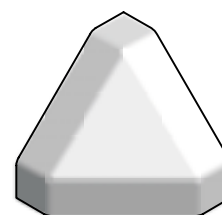
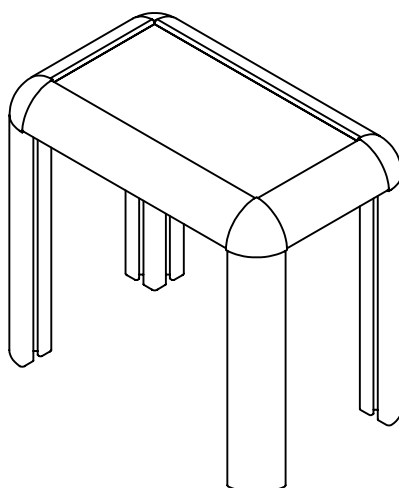
Screws 5/16-18 x 3/4" [25-112-5]

Ordering Information

	Unit	Weight	Part #
Corner Bracket 1.5"	Each	4.23 oz	22-153
Connector Cap 1.5", Radius	Each	0.28 oz	22-154
Connector Cap 1.5", 3 x 45°	Each	0.32 oz	22-155

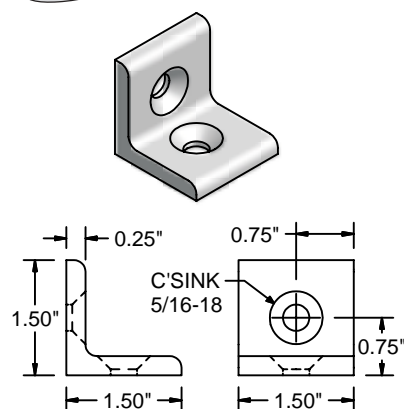


22-154

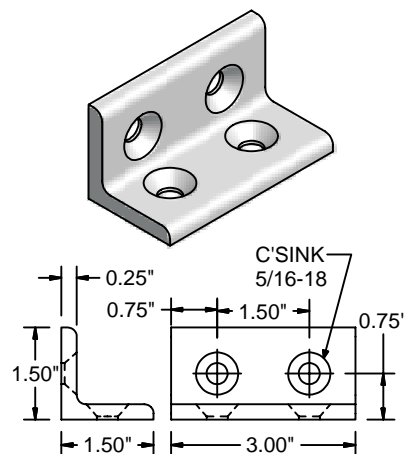


22-155

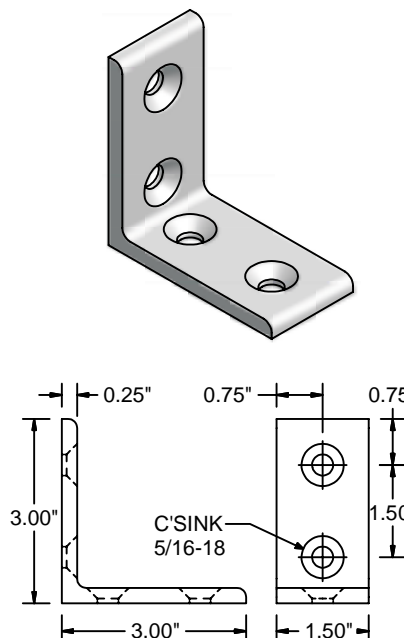
1.5" Series



20-330



20-337



20-338

Angle Bracket
 1.5" x 1.5" x 1.5"
 [20-330]

5/16-18 T-Nut
 [25-002]

5/16-18 x 5/8" FHCS
 [25-210-5]

1.5" Series

Application



Angle Brackets are used to fasten profiles together without any machining. Although this does not provide as solid of a joint as other fastening methods, it allows flexibility for positioning and joining of profiles with no servicing.

Technical Data

Aluminum, Clear Anodized

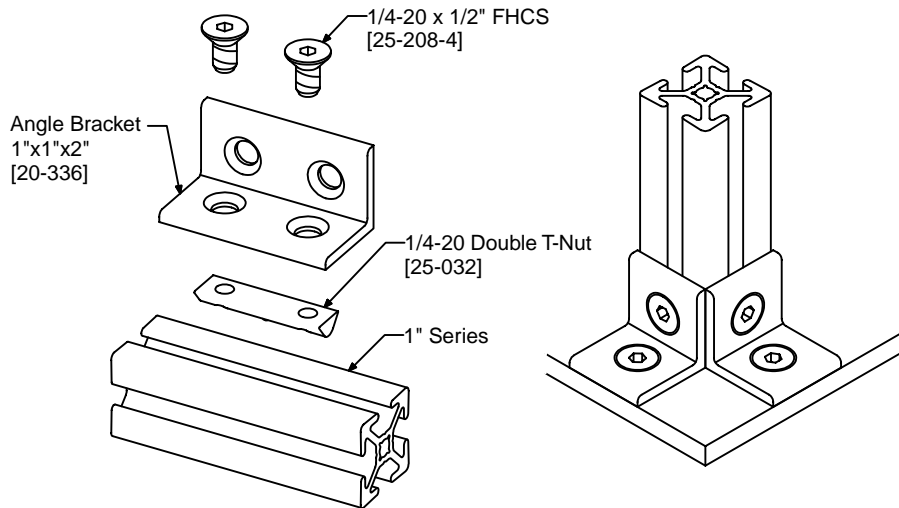
Recommended Fastening Hardware (Order Separately)

Screws 5/16-18 [25-210-5]
 T-Nuts Any 1.5" Series 5/16 [25-002, 25-082, 25-182]

Ordering Information

Angle Bracket - 1.5" x 1.5" x 1.5"
 Angle Bracket - 1.5" x 1.5" x 3"
 Angle Bracket - 1.5" x 3" x 3"

Unit	Weight	Part #
Each	0.08 lb	20-330
Each	0.2 lb	20-337
Each	0.2 lb	20-338



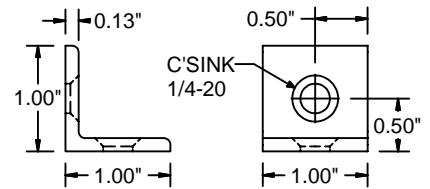
1" Series

Application

Angle Brackets are used to fasten profiles together without any machining. Although this does not provide as solid of a joint as other fastening methods, it allows flexibility for positioning and joining of profiles with no servicing.

Technical Data

Aluminum, Clear Anodized



20-335

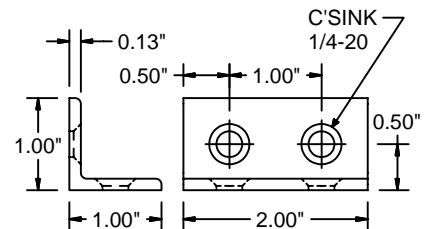
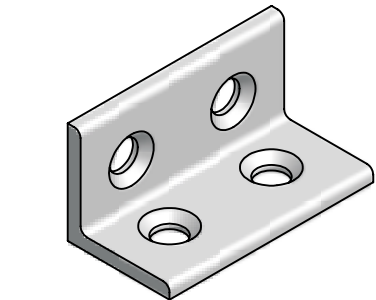
Recommended Fastening Hardware (Order Separately)

Screws 1/4-20 [25-208-4]
 T-Nuts Any 1" Series 1/4 [25-031, 25-034, 25-036]

Ordering Information

Angle Bracket - 1" x 1" x 1"
 Angle Bracket - 1" x 1" x 2"

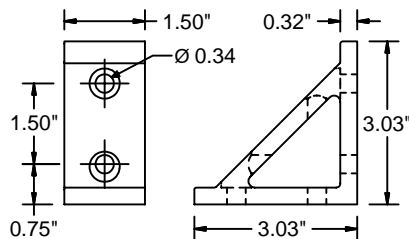
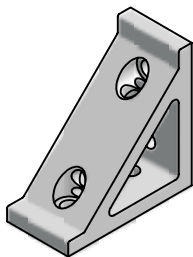
Unit	Weight	Part #
Each	0.04 lb	20-335
Each	0.08 lb	20-336



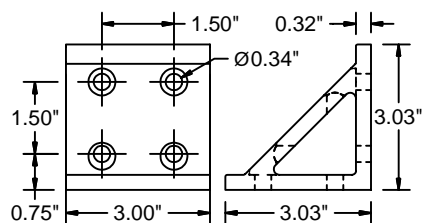
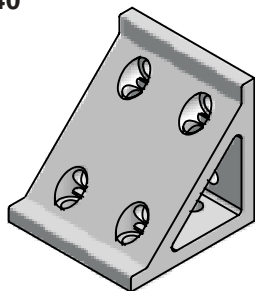
20-336

Brackets,
Gussets & Plates

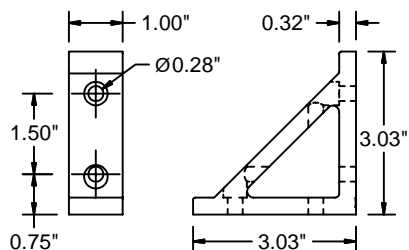
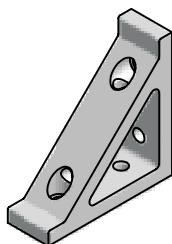
Machined Gussets



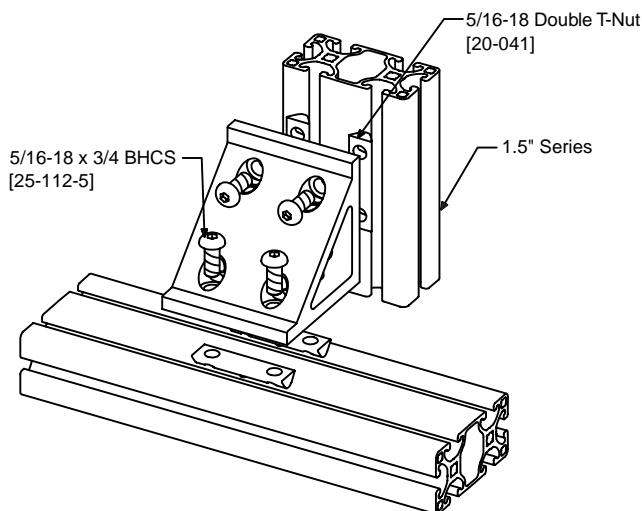
20-440



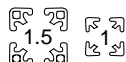
20-441



20-442



Application



Provide a high strength connection between profiles. Gussets are used to attach profiles at 90° angles without any additional fasteners.

Technical Data

Aluminum, Clear Anodized

* 20-442 is designed to be used on 1" series profiles.

Recommended Fastening Hardware (Order Separately)

20-440 & 20-441

Screws 5/16-18 x 3/4" [25-112-5]

T-Nuts Any 1.5" Series 5/16 [25-002, 20-082, 20-182]

* You may also be able to use a double T-nut [20-041, 20-046]

20-442

Screws 1/4-20 x 5/8" [25-110-4]

T-Nuts Any 1" Series 1/4 [25-031, 25-034, 25-036]

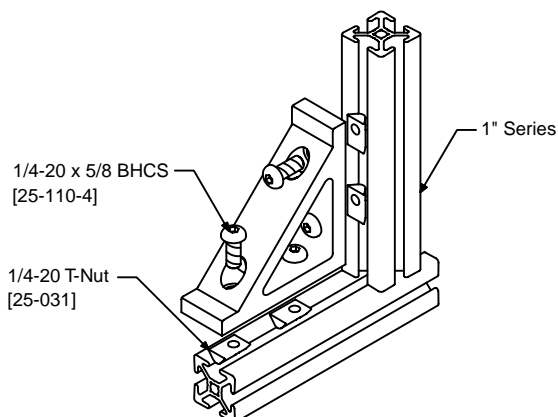
Ordering Information

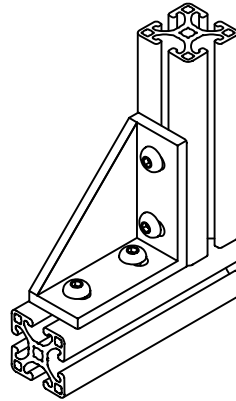
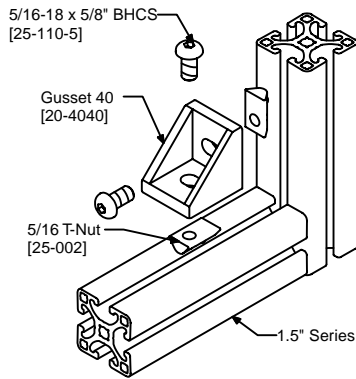
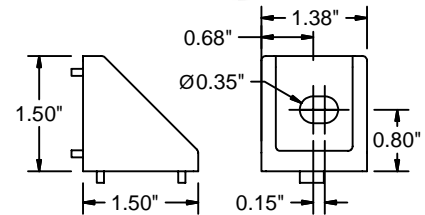
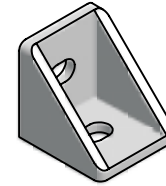
Gusset – 3" x 3" x 1.5"

Gusset – 3" x 3" x 3"

Gusset – 3" x 3" x 1"

Unit	Weight	Part #
Each	0.30 lb	20-440
Each	0.68 lb	20-441
Each	0.24 lb	20-442



**Cast Gussets****20-4040****Application**

Provide a high strength right angle connection between two profiles. These gussets can only be used for right angle connections in-line with T-slots as shown. Cast tabs help align the gussets in the center of the profile.

* 20-1010 is designed to be used on 1" series profiles.

Technical Data

Die Cast Aluminum

Recommended Fastening Hardware (Order Separately)

20-4040 & 20-8040

Screws 5/16-18 x 5/8" [25-110-5]

T-Nuts Any 1.5" Series 5/16 [25-002, 20-082, 20-182]

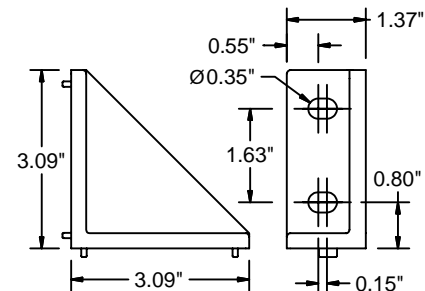
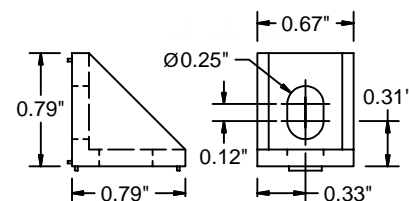
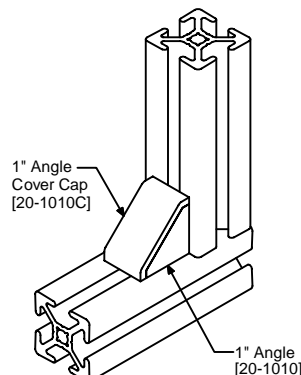
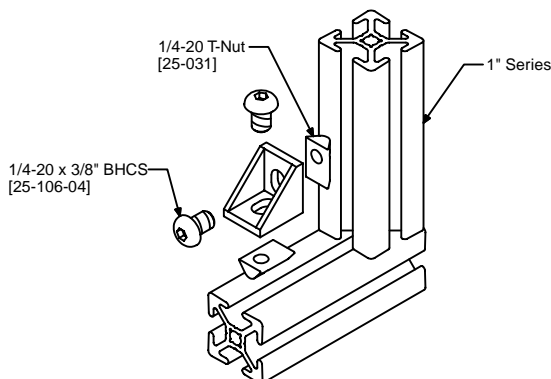
20-1010

Screws 1/4-20 x 3/8" [25-106-4]

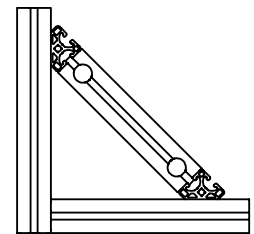
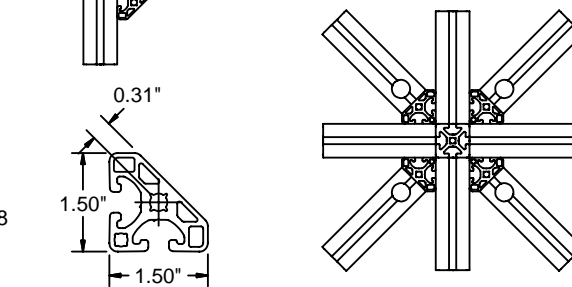
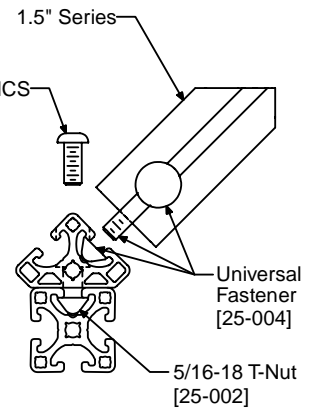
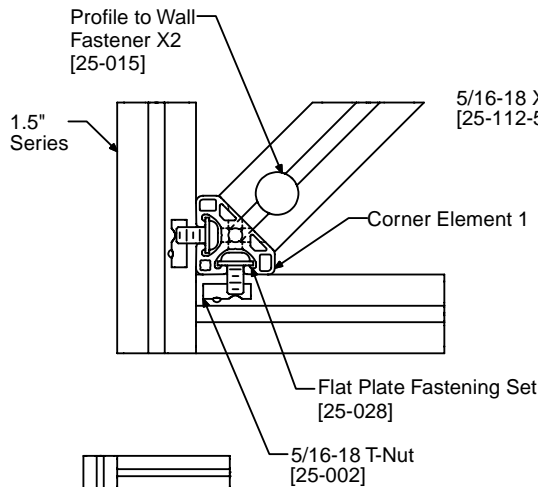
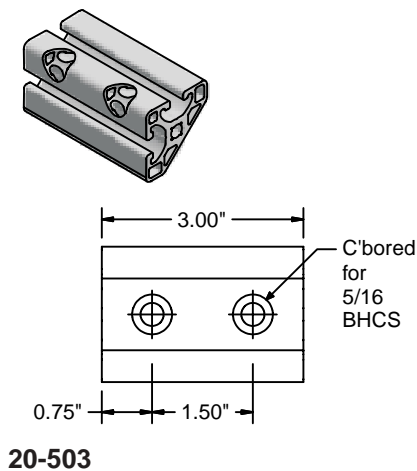
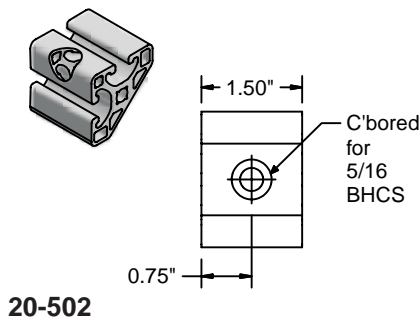
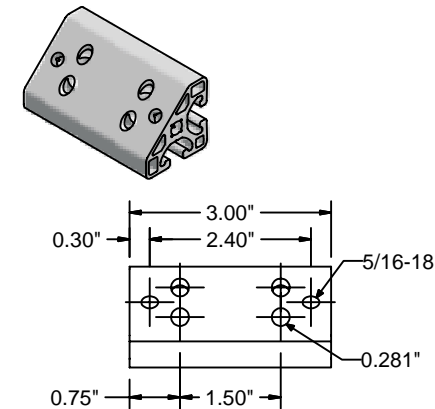
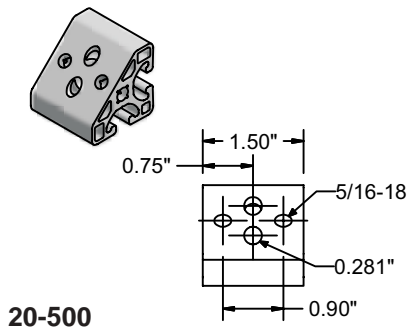
T-Nuts Any 1" Series 1/4 [25-031, 25-034, 25-036]

Ordering Information

	Unit	Weight	Part #
Gusset 40	Each	0.13 lb	20-4040
Gusset 40x80	Each	0.30 lb	20-8040
Gusset 20	Each	0.08 lb	20-1010
Cover Cap for Gusset 20	Each	0.01 lb	20-1010C

**20-8040****20-1010****20-1010C**

Corner Elements



Application

Designed for attaching profiles at 45°. Ideal for trusses, bracing and supports.

Technical Data

Aluminum, Clear Anodized

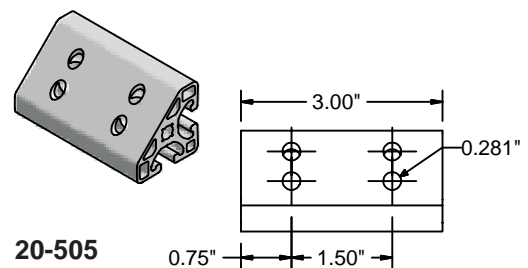
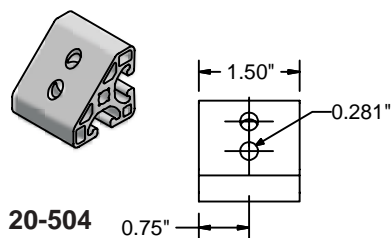
Recommended Fastening Hardware (Order Separately)

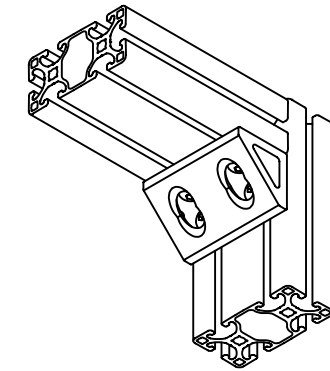
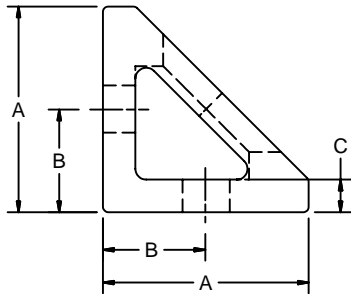
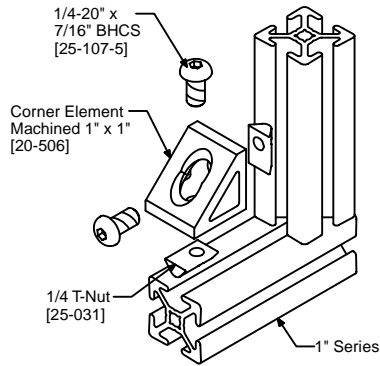
Use any 5/16 BHCS and appropriate T-nut if needed.

Ordering Information

	Unit	Weight	Part #
Corner Element 1, 1.5"	Each	0.15 lb	20-500
Corner Element 1, 3"	Each	0.32 lb	20-501
Corner Element 2, 1.5"	Each	0.15 lb	20-502
Corner Element 2, 3"	Each	0.29 lb	20-503
Corner Element 3, 1.5"	Each	0.16 lb	20-504
Corner Element 3, 3"	Each	0.33 lb	20-505
End Cap 1.5" x 1.5" - 45°	Each	0.01 lb	18-1545

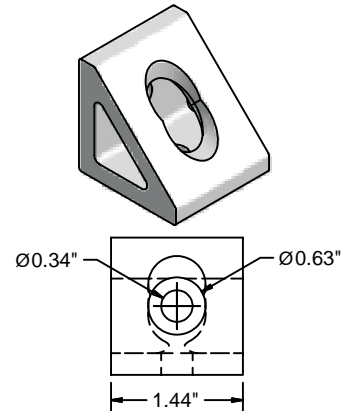
*You can create custom length corner elements by ordering the desired profile (page 20) and machining them.



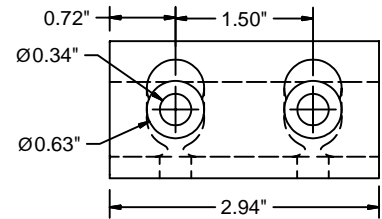
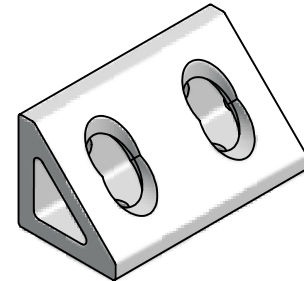


Part #	A	B	C
20-508	1.496	.75	.177
20-509	1.496	.75	.177
20-506	1.000	.50	.236
20-507	1.000	.50	.236

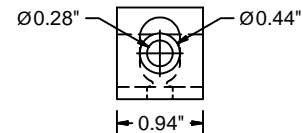
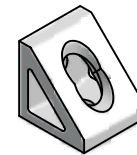
Corner Elements Machined



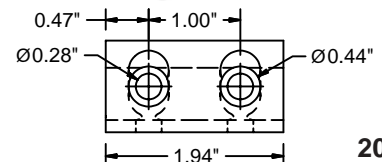
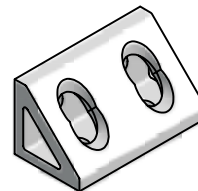
20-508



20-509



20-506



20-507

Application

These corner brackets provide a high strength, accurate right angle connection between two profiles, while providing a low profile, aesthetically pleasing look.

Technical Data

Aluminum,
Clear Anodized

Recommended Fastening Hardware (Order Separately)

20-508 & 20-509

Screws 5/16-18 x 5/8" [25-110-5]

T-Nuts* Any 1.5" Series 5/16 [25-002, 20-082, 20-182]

* You may also be able to use a double T-Nut [25-041, 25-046] for the 20-509.

20-506 & 20-507

Screws 1/4-20 x 7/16" [25-107-4]

T-Nuts* Any 1" Series 1/4 [25-031, 25-034, 25-036]

* You may also be able to use a double T-Nut [25-032, 25-037] for the 20-507.

Ordering Information

Corner Element 1.5" x 1.5"

Unit

Weight

Part #

Each

0.14 lb

20-508

Corner Element 1.5" x 3"

Each

0.30 lb

20-509

Corner Element 1" x 1"

Each

0.05 lb

20-506

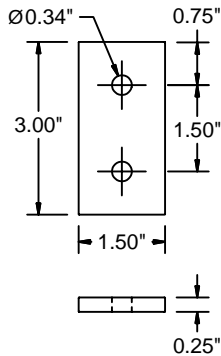
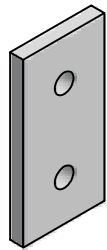
Corner Element 1" x 2"

Each

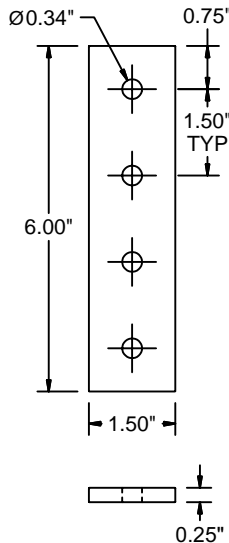
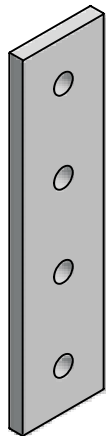
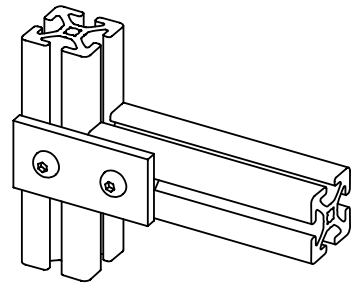
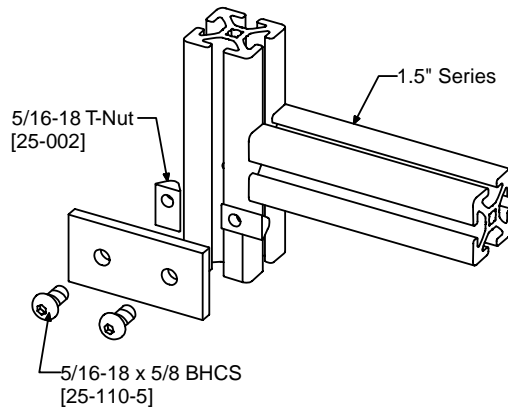
0.11 lb

20-507

1.5" Straight



20-300



20-301

Application



Designed for fastening 1.5" profiles together without servicing. Can also be used for additional strength on joints with fasteners.

Technical Data

Aluminum, Clear Anodized

Recommended Fastening Hardware (Order Separately)

Screws 5/16-18 x 5/8" [25-110-5]

T-Nuts* Any 1.5" Series 5/16 [25-002, 20-082, 20-182]

* You may also be able to use a double T-nut [25-041, 25-046]

Ordering Information

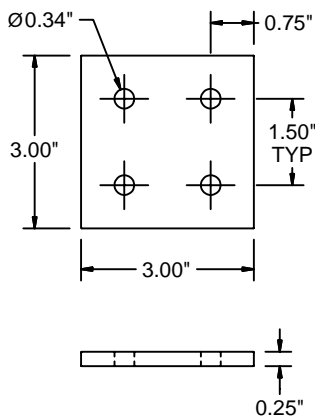
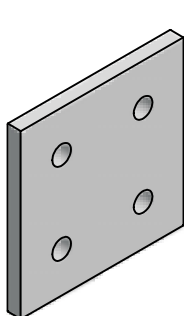
Joining Plate 1.5" x 3"

Joining Plate 1.5" x 6"

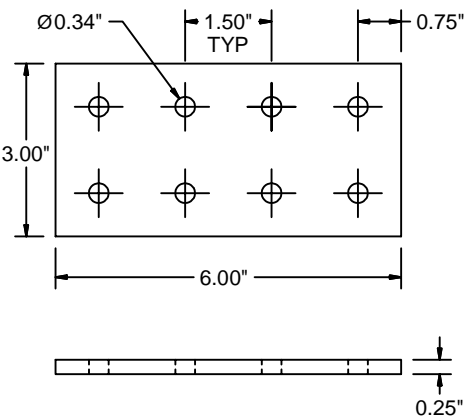
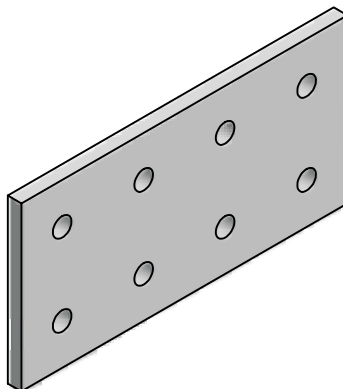
Joining Plate 3" x 3"

Joining Plate 3" x 6"

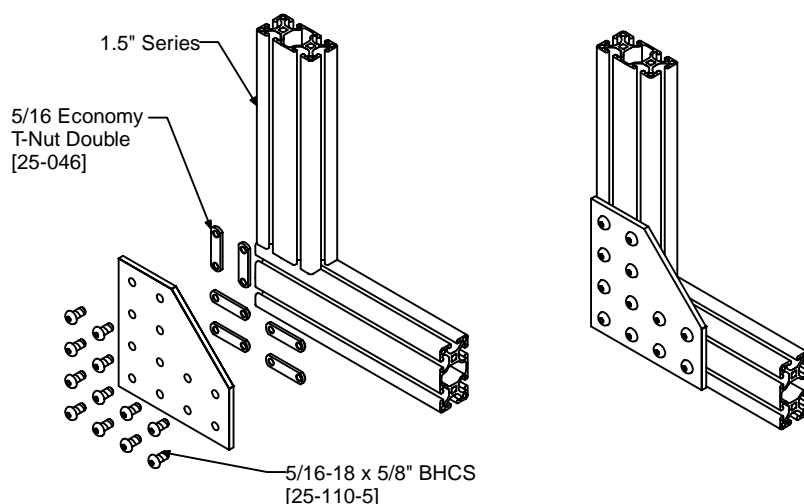
Unit	Weight	Part #
Each	0.10 lb	20-300
Each	0.20 lb	20-301
Each	0.21 lb	20-302
Each	0.43 lb	20-303



20-302



20-303



Application

Corner and "T" style joining plates for fastening 1.5" Series profiles together without machining. Can also give added strength on any fastened joint.

Technical Data

Aluminum, Clear Anodized

Recommended Fastening Hardware (Order Separately)

Screws 5/16-18 x 5/8" [25-110-5]

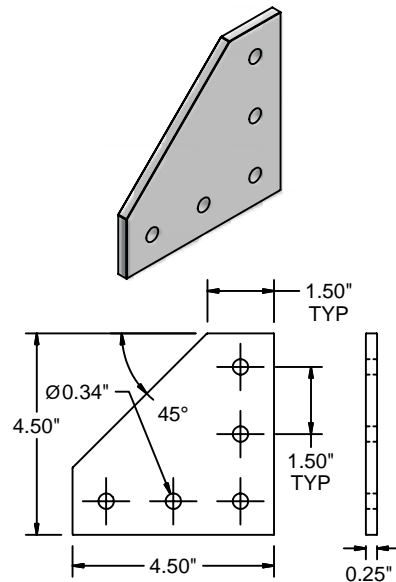
T-Nuts* Any 1.5" Series 5/16 [25-002, 20-082, 20-182]

* You may also be able to use a double T-nut [25-041, 25-046]

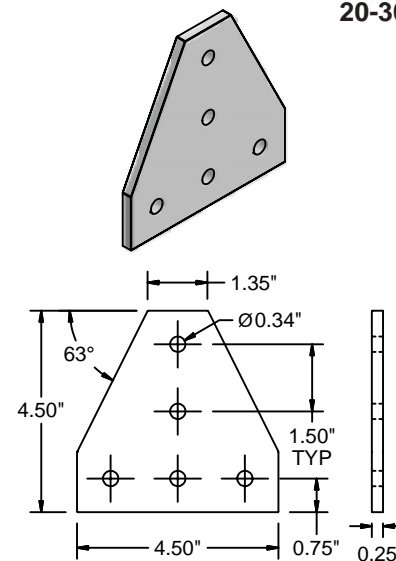
Ordering Information

	Unit	Weight	Part #
Joining Plate, Corner 4.5" x 4.5"	Each	0.38 lb	20-304
Joining Plate, T 4.5" x 4.5"	Each	0.38 lb	20-305
Joining Plate, Corner 6" x 6"	Each	0.79 lb	20-306
Joining Plate, T 6" x 6"	Each	0.79 lb	20-307

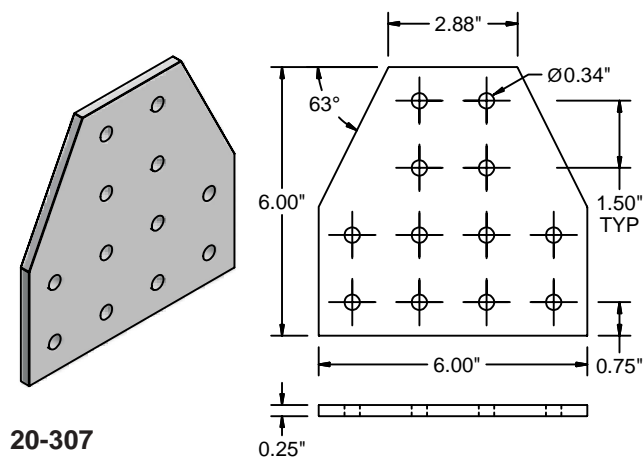
1.5" Corner & "T"



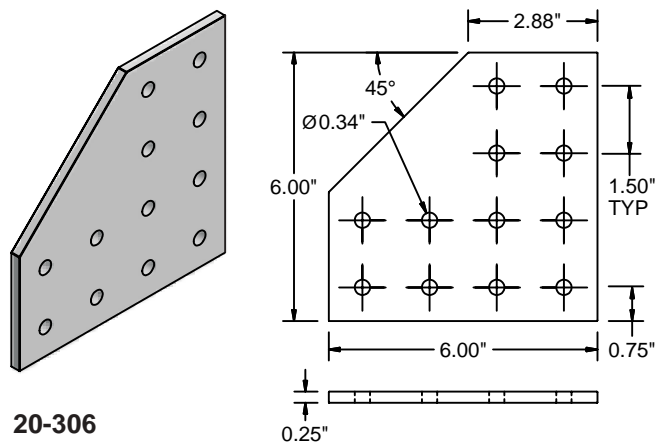
20-304



20-305

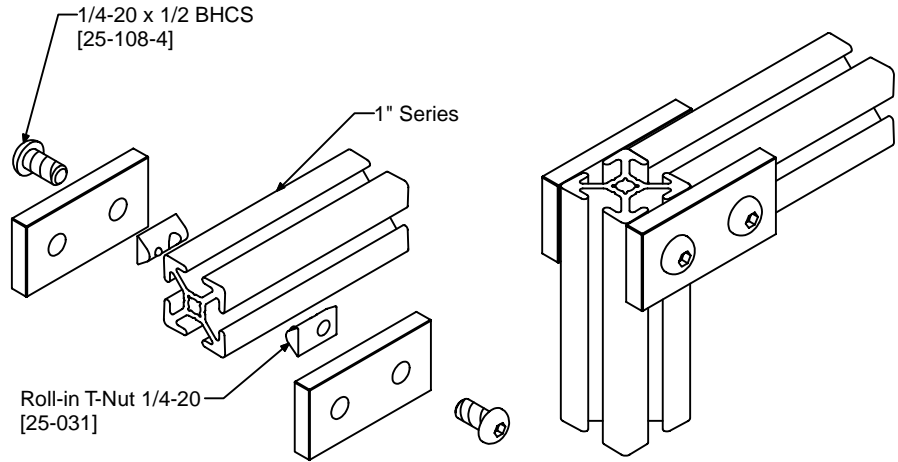
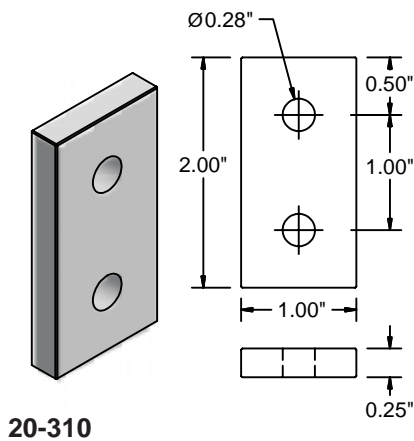


20-307



20-306

1" Straight



Application

Designed for fastening 1" profiles together without servicing. Can also be used for additional strength on joints with fasteners.

Technical Data

Aluminum, Clear Anodized

Recommended Fastening Hardware (Order Separately)

Screws 1/4-20 x 1/2" [25-108-4]

T-Nuts* Any 1" Series 1/4 [25-031, 25-034, 25-036]

* You may also be able to use a double T-nut [25-032, 25-037]

Ordering Information

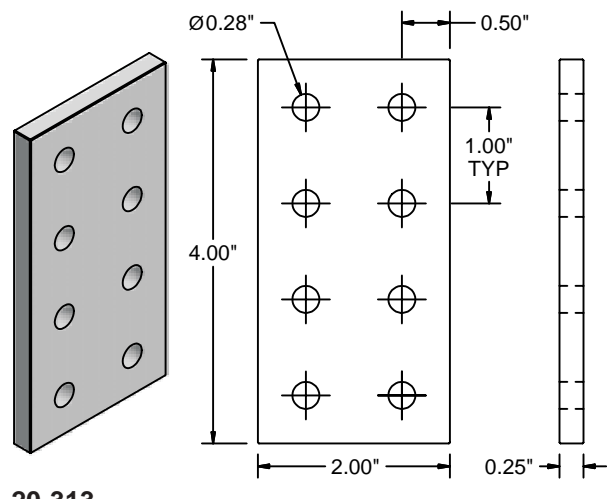
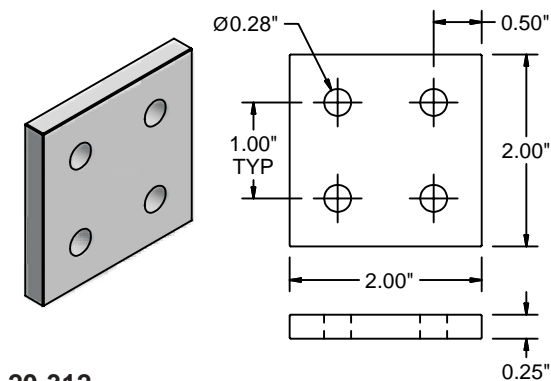
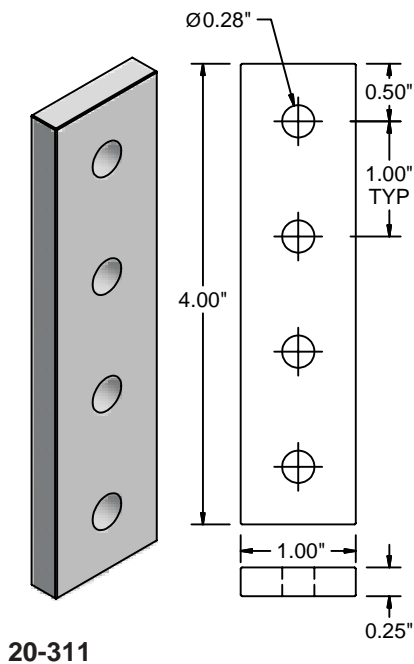
Joining Plate 1" x 2"

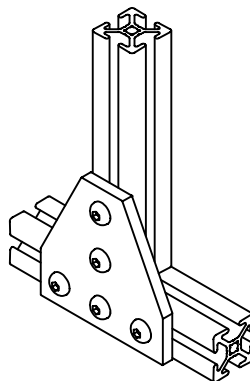
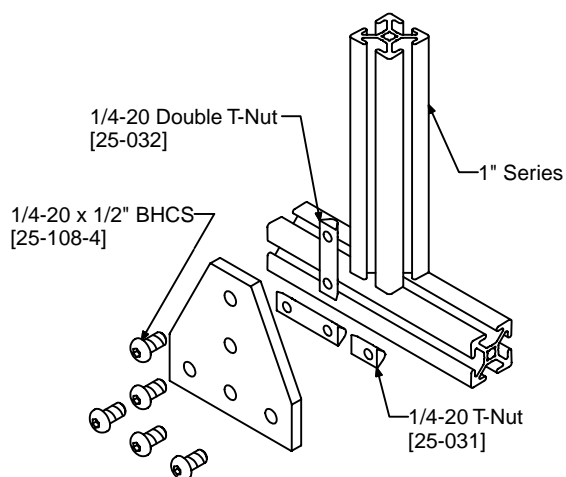
Joining Plate 1" x 4"

Joining Plate 2" x 2"

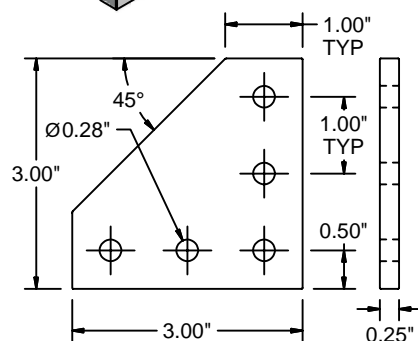
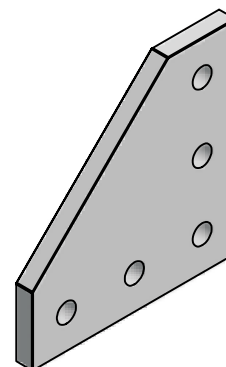
Joining Plate 2" x 4"

Unit	Weight	Part #
Each	0.04 lb	20-310
Each	0.08 lb	20-311
Each	0.08 lb	20-312
Each	0.15 lb	20-313





1" Corner & "T"



20-314

Application

Corner and "T" style joining plates for fastening 1" Series profiles together without machining. Can also give added strength to any fastened joint.

Technical Data

Aluminum, Clear Anodized

Recommended Fastening Hardware (Order Separately)

Screws 1/4-20 x 1/2" [25-108-4]

T-Nuts* Any 1" Series 1/4 [25-031, 25-034, 25-036]

* You may also be able to use a double T-nut [25-032, 25-037]

Ordering Information

Joining Plate, Corner 3" x 3"

Joining Plate, T 3" x 3"

Unit

Each

Weight

0.09 lb

Part

20-314

Unit

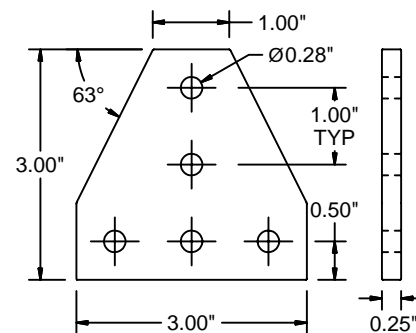
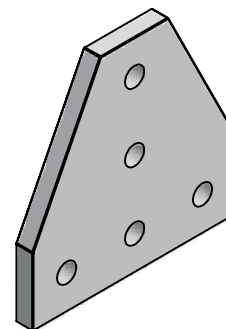
Each

Weight

0.09 lb

Part

20-315



20-315